

GRAYLING, MICHIGAN

AL-5957 (FAA)

25163

APP CRS	Rwy Ldg	5005
142°	TDZE	1154
	Apt Elev	1158

RNAV (GPS) RWY 14

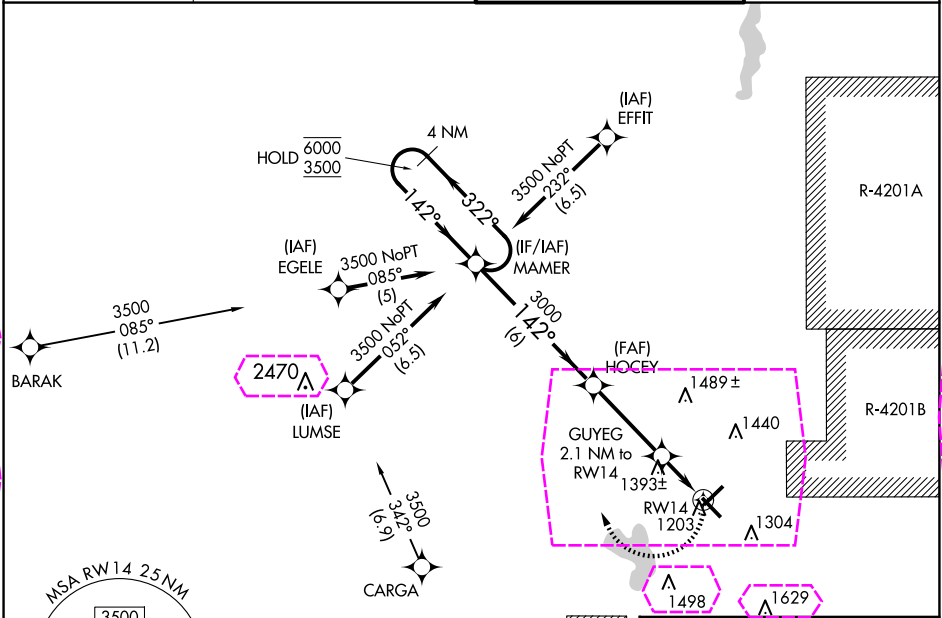
GRAYLING AAF (GOV)

RNP APCH - GPS.

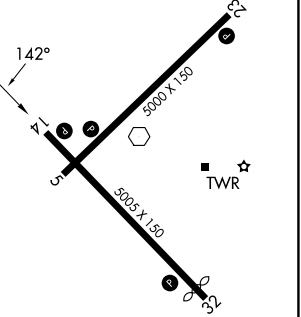
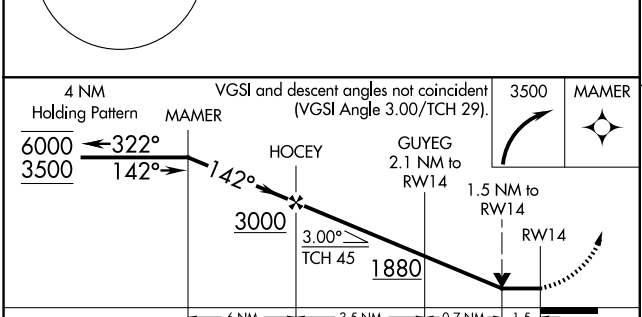
V VDP NA when using HTL altimeter setting. Circling Rwy 5, 23, 32 NA at night.
A Rwy 14 helicopter visibility reduction below $\frac{3}{4}$ SM NA. When local altimeter setting not received, use HTL altimeter setting and increase all MDAs 60 feet and LNAV visibility Cat C and D $\frac{1}{4}$ SM, and Circling visibility Cat C and D $\frac{1}{4}$ SM.

MISSED APPROACH: Climbing right turn to 3500 direct MAMER and hold.

ATIS 119.075	MINNEAPOLIS CENTER 125.475 269.45	GRAYLING TOWER ★ 126.2 (CTAF) 0	GND CON 121.9
-----------------	--------------------------------------	------------------------------------	------------------



ELEV 1158	TDZE 1154
-----------	-----------



CATEGORY	A	B	C	D
LNAV MDA	1660-1	506 (600-1)	1660-1 $\frac{3}{8}$	506 (600-1 $\frac{3}{8}$)
CIRCLING	1660-1 502 (600-1)	1720-1 562 (600-1)	1740-1 $\frac{1}{2}$ 582 (600-1 $\frac{1}{2}$)	1960-2 $\frac{1}{2}$ 802 (900-2 $\frac{1}{2}$)

REIL Rws 5, 14, 23, and 32 0
MRL Rwy 5-23 and 14-32 0

GRAYLING, MICHIGAN
Amdt 1 26DEC24

44°41'N-84°44'W

GRAYLING AAF (GOV)

RNAV (GPS) RWY 14

GRAYLING, MICHIGAN

AL-5957 (FAA)

25219

APP CRS	Rwy Ldg	5005
142°	TDZE	1154
	Apt Elev	1158

RNAV (GPS) RWY 14

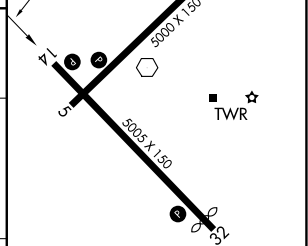
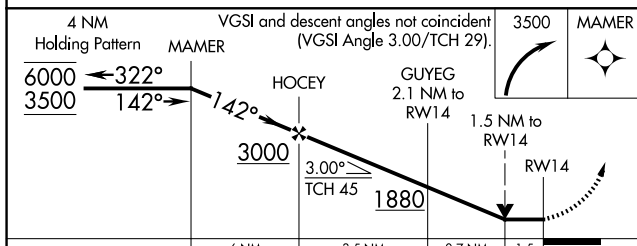
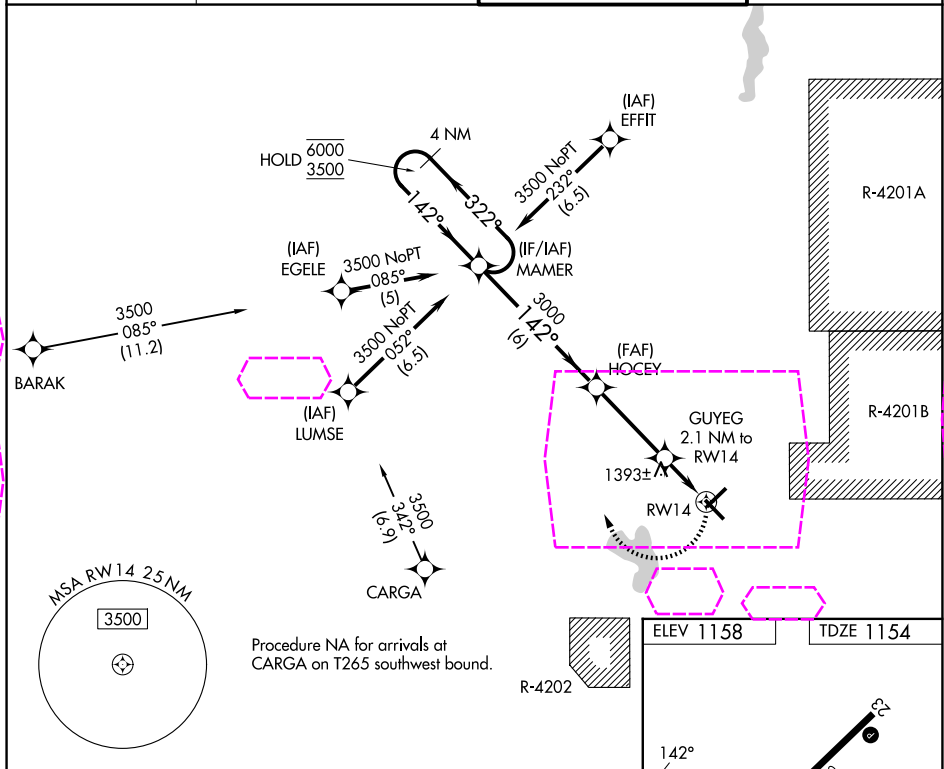
GRAYLING AAF (GOV)

RNP APCH - GPS.

VDP NA when using HTL altimeter setting. Circling Rwy 5, 23, 32 NA at night.
Rwy 14 helicopter visibility reduction below $\frac{3}{4}$ SM NA. When local altimeter setting not received, use HTL altimeter setting and increase all MDAs 60 feet and LNAV visibility Cat C and D $\frac{1}{4}$ SM, and Circling visibility Cat C and D $\frac{1}{4}$ SM.

MISSED APPROACH: Climbing right turn to 3500 direct MAMER and hold.

ATIS 119.075	MINNEAPOLIS CENTER 125.475 269.45	GRAYLING TOWER ★ 124.65 (CTAF) 0	GND CON 121.9
-----------------	--------------------------------------	-------------------------------------	------------------



CATEGORY	A	B	C	D
LNAV MDA	1660-1	506 (600-1)	1660-1 $\frac{3}{8}$	506 (600-1 $\frac{3}{8}$)
CIRCLING	1660-1 502 (600-1)	1720-1 562 (600-1)	1740-1 $\frac{1}{2}$ 582 (600-1 $\frac{1}{2}$)	1960-2 $\frac{1}{2}$ 802 (900-2 $\frac{1}{2}$)

REIL Rwy 5, 14, 23, and 32 0
MRL Rwy 5-23 and 14-32 0

GRAYLING, MICHIGAN

Amtd 1 26DEC24

44°41'N-84°44'W

GRAYLING AAF (GOV)

RNAV (GPS) RWY 14

EC-1, 07 AUG 2025 to 04 SEP 2025

EC-1, 07 AUG 2025 to 04 SEP 2025