

GRAYLING, MICHIGAN

AL-5957 (FAA)

25163

NDB GYG 359	APP CRS 142°	Rwy Ldg TDZE Apt Elev 5005 1154 1158
-----------------------	------------------------	--

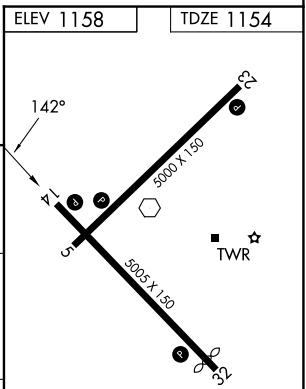
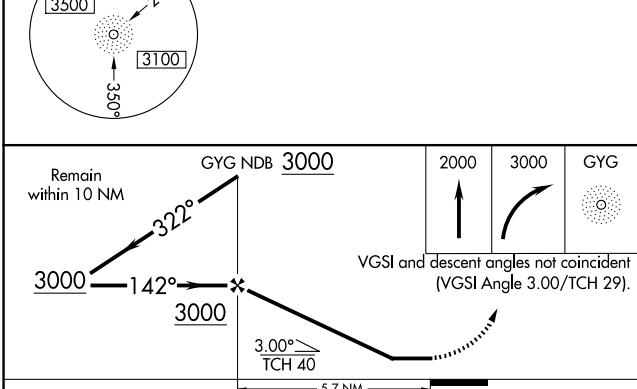
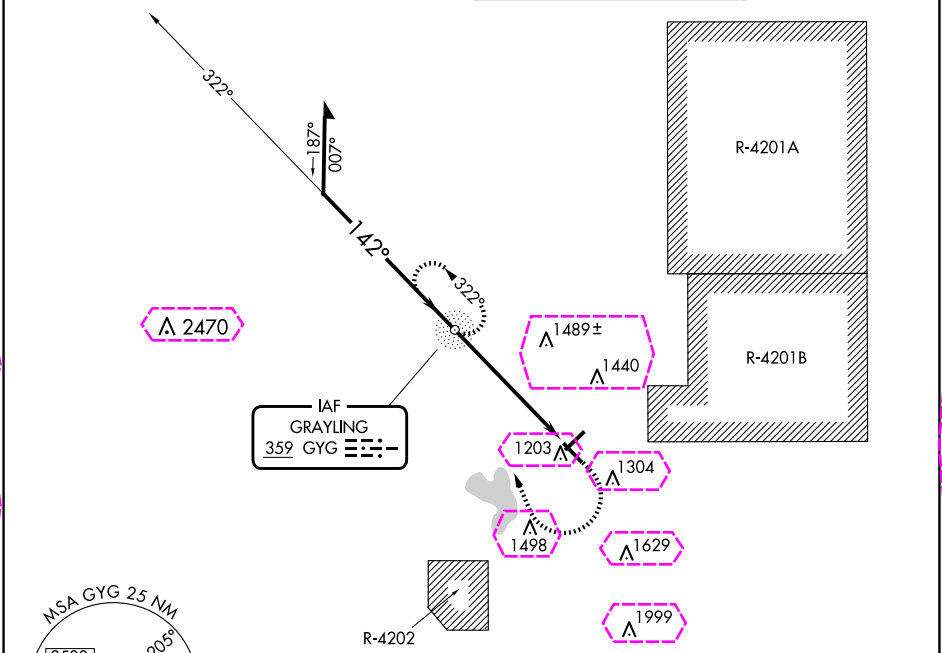
NDB RWY 14

GRAYLING AAF (GOV)

▽ Circling Rwy 5, 23, 32 NA at night. Rwy 14 helicopter visibility reduction below $\frac{3}{4}$ SM NA.
▲ NA When local altimeter setting not received, use HTL altimeter setting and increase all MDAs 60 feet and S-14 and Circling Cats B/C/D visibilities $\frac{1}{2}$ SM.

MISSED APPROACH:
Climb to 2000 then climbing right turn to 3000 direct GYG NDB and hold.

ATIS 119.075	MINNEAPOLIS CENTER 125.475 269.45	GRAYLING TOWER ★ 126.2 (CTAF) 0	GND CON 121.9
------------------------	---	---	-------------------------



CATEGORY	A	B	C	D
S-14	1880-1 726 (800-1)		1880-2 726 (800-2)	
CIRCLING	1880-1 722 (800-1)		1880-2 722 (800-2)	1960-2½ 802 (900-2½)

REIL Rwy 5, 14, 23 and 32 L					
MIRL Rwy 5-23 and 14-32 L					
FAF to MAP 5.7 NM					
Knots	60	90	120	150	180
Min:Sec	5:42	3:48	2:51	2:17	1:54

GRAYLING, MICHIGAN
Amdt 9 31OCT24

44°41'N-84°44'W

GRAYLING AAF (GOV)

NDB RWY 14

EC-1, 10 JUL 2025 to 07 AUG 2025

EC-1, 10 JUL 2025 to 07 AUG 2025

GRAYLING, MICHIGAN

AL-5957 (FAA)

25219

NDB GYG 359	APP CRS 142°	Rwy Ldg TDZE Apt Elev	5005 1154 1158
-----------------------	------------------------	-----------------------------	---

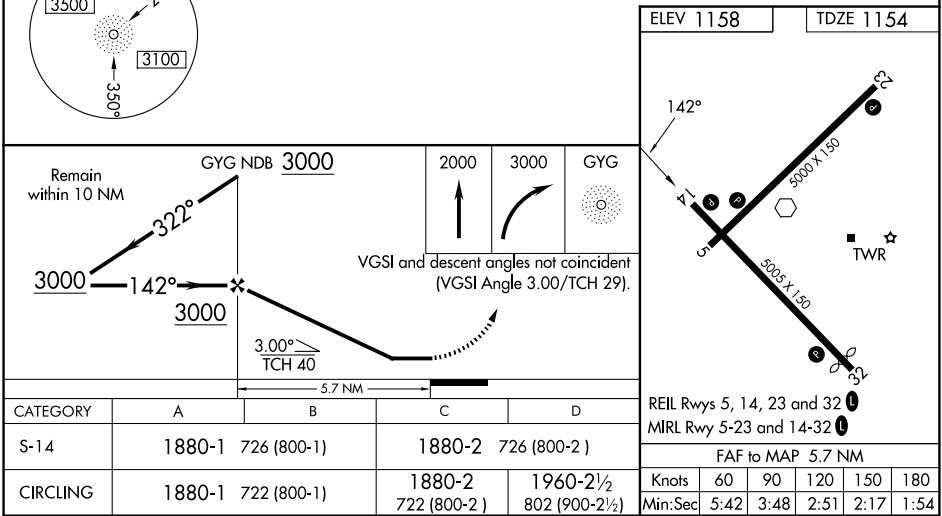
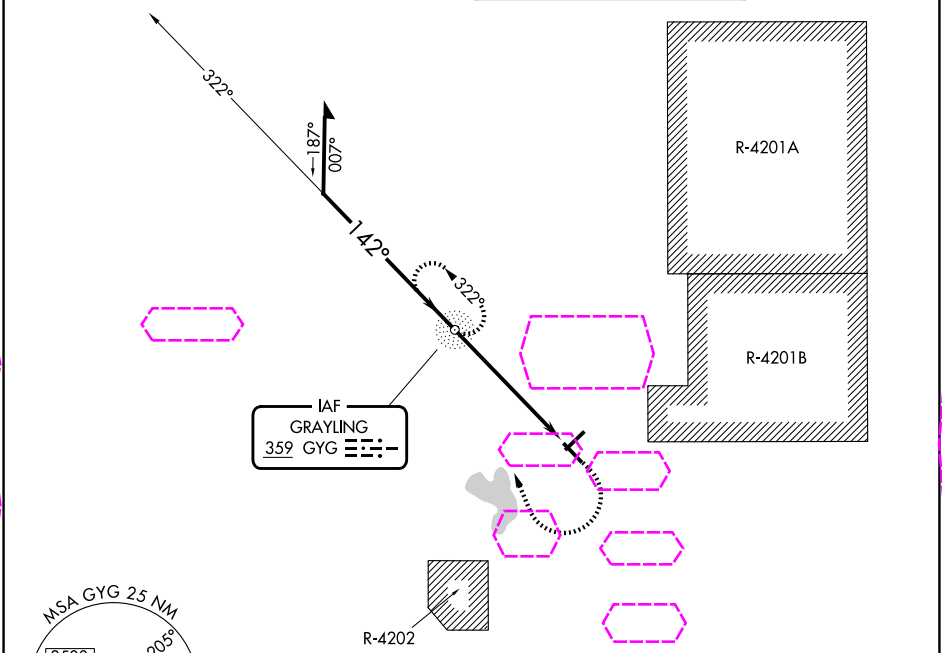
NDB RWY 14
GRAYLING AAF (GOV)

▽ Circling Rwy 5, 23, 32 NA at night. Rwy 14 helicopter visibility reduction below $\frac{3}{4}$ SM NA. When local altimeter setting not received, use HTL altimeter setting and increase all MDAs 60 feet and S-14 and Circling Cats B/C/D visibilities $\frac{1}{2}$ SM.

△ NA

MISSED APPROACH:
Climb to 2000 then climbing right turn to 3000 direct GYG NDB and hold.

ATIS 119.075	MINNEAPOLIS CENTER 125.475 269.45	GRAYLING TOWER ★ 124.65 (CTAF) 0	GND CON 121.9
------------------------	---	--	-------------------------



EC-1, 07 AUG 2025 to 04 SEP 2025

EC-1, 07 AUG 2025 to 04 SEP 2025