

LANCASTER, TEXAS

AL-5936 (FAA)

24305

WAAS CH <b>42505</b> <b>W31A</b>	APP CRS <b>314°</b>	Rwy Idg <b>6500</b> TDZE <b>487</b> Apt Elev <b>501</b>
----------------------------------------	------------------------	---------------------------------------------------------------

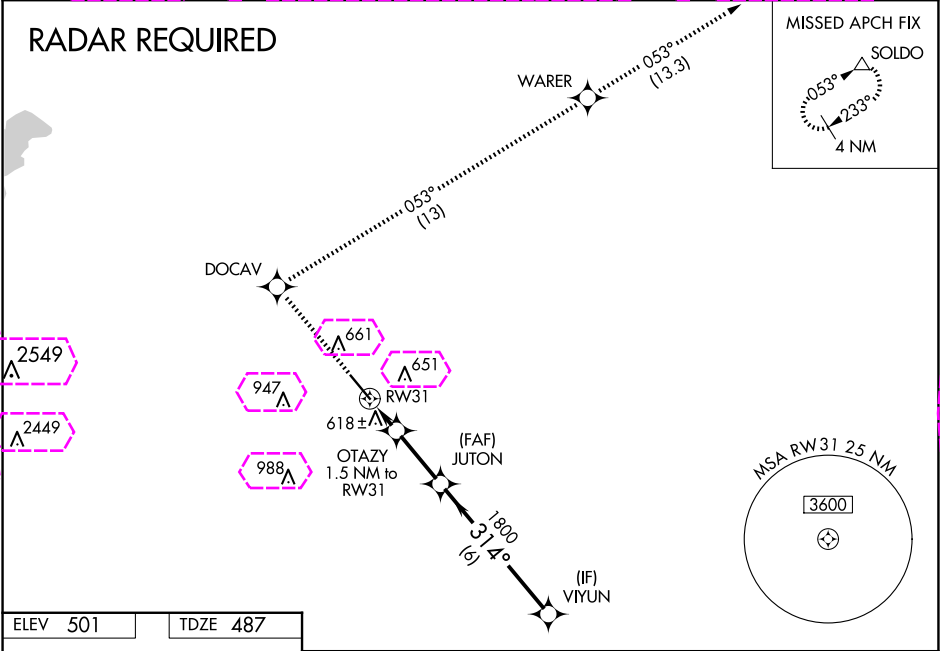
# RNAV (GPS) RWY 31

LANCASTER RGNL (LNC)

For uncompensated Baro-VNAV systems, LNAV/VNAV NA below -16°C (4°F) or above 47°C (116°F). DME/DME RNP-0.3 NA. Baro-VNAV NA when using Dallas Exec altimeter setting. When local altimeter setting not received, use Dallas Exec altimeter setting and increase LPV DA to 732 feet; increase LNAV/VNAV DA to 970 feet and visibility all Cats ¼ SM; increase all MDAs 60 feet and LNAV Cats C/D and Circling Cats C/D visibility ¼ SM.

MISSED APPROACH: Climb to 2000 direct DOCAV and right turn on track 053° to WARER then climb to 3000 on track 053° to SOLD0 and hold.

AWOS-3PT <b>118.975</b>	LONE STAR APP CON <b>125.2 343.65</b>	GCO <b>121.725</b>	UNICOM <b>122.7 (CTAF) 0</b>
----------------------------	------------------------------------------	-----------------------	---------------------------------



MIRL Rwy 13-31

	2000 ↑	DOCAV ✦	WARER ✦	3000 ↑ tr 053°	SOLD0 △			
	* LNAV only					VIYUN		
	OTAZY 1.5 NM to RW31 RW31 1000* JUTON 1800 2700 314° 1800 GP 3.00° TCH 50							
	1.5 NM 2.5 NM 6 NM							
CATEGORY	A		B		C	D		
LPV DA	687-¾ 200 (200-¾)							
LNAV/VNAV DA	925-1½ 438 (500-1½)							
LNAV MDA	880-1 393 (400-1)					880-1¼ 393 (400-1¼)		
CIRCLING	980-1 479 (500-1)	1020-1 519 (600-1)	1300-2¼ 799 (800-2¼)	1300-2½ 799 (800-2½)				

LANCASTER, TEXAS  
Amdt 1A 07OCT21

32°35'N-96°43'W

# LANCASTER RGNL (LNC) RNAV (GPS) RWY 31

LANCASTER, TEXAS

AL-5936 (FAA)

25219

WAAS CH <b>42505</b> <b>W31A</b>	APP CRS <b>314°</b>	Rwy Ldg <b>6500</b> TDZE <b>487</b> Apt Elev <b>501</b>
----------------------------------------	------------------------	---------------------------------------------------------------

# RNAV (GPS) RWY 31

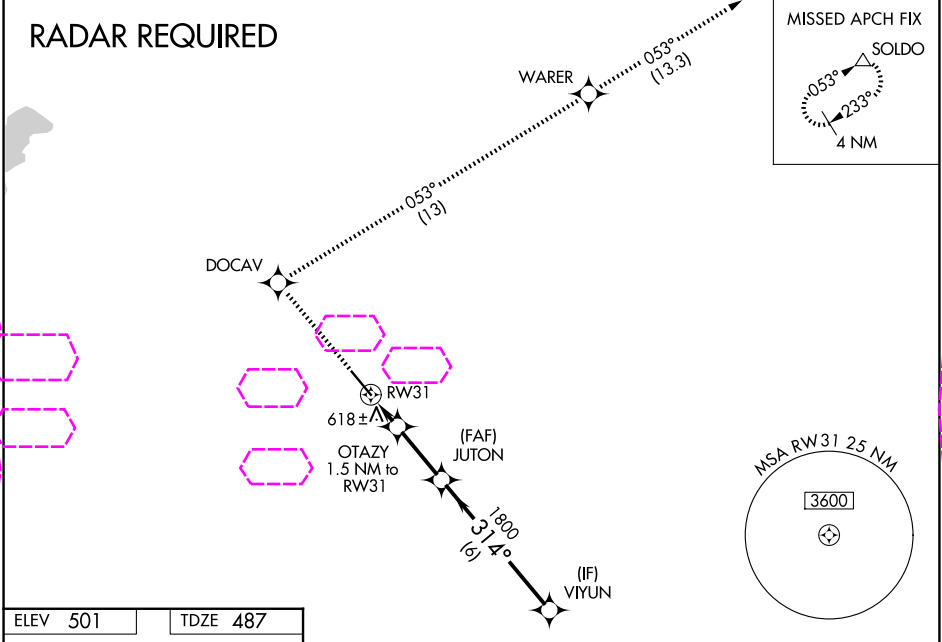
LANCASTER RGNL (LNC)

⚠ For uncompensated Baro-VNAV systems, LNAV/VNAV NA below -16°C (4°F) or above 47°C (116°F). DME/DME RNP-0.3 NA. Baro-VNAV NA when using Dallas Exec altimeter setting. When local altimeter setting not received, use Dallas Exec altimeter setting and increase LPV DA to 732 feet; increase LNAV/VNAV DA to 970 feet and visibility all Cats ¼ SM; increase all MDAs 60 feet and LNAV Cats C/D and Circling Cats C/D visibility ¼ SM.

MISSED APPROACH: Climb to 2000 direct DOCAV and right turn on track 053° to WARER then climb to 3000 on track 053° to SOLD0 and hold.

AWOS-3PT <b>118.975</b>	LONE STAR APP CON <b>125.2 343.65</b>	UNICOM <b>122.7 (CTAF) 0</b>
----------------------------	------------------------------------------	---------------------------------

## RADAR REQUIRED



ELEV 501	TDZE 487
----------	----------

MIRL Rwy 13-31

6500 X 100

0.4% UP 13

314°

<div> <div>2000 ↑</div> <div>DOCAV ✧</div> <div>tr 053° ↷</div> <div>WARER ✧</div> <div>3000 ↑ tr 053°</div> <div>SOLD0 △</div> </div>				
<div> <div>* LNAV only</div> <div> <div>OTAZY 1.5 NM to RW31</div> <div>JUTON 1800</div> <div>VIYUN 2700</div> </div> <div> <div>314°</div> <div>1800</div> <div>1000*</div> </div> <div> <div>1.5 NM</div> <div>2.5 NM</div> <div>6 NM</div> </div> <div>GP 3.00° TCH 50</div> </div>				
CATEGORY	A		B	C
LPV DA	687-¾ 200 (200-¾)			
LNAV/VNAV DA	925-1½ 438 (500-1½)			
LNAV MDA	880-1 393 (400-1)			880-1¼ 393 (400-1¼)
CIRCLING	980-1 479 (500-1)	1020-1 519 (600-1)	1300-2¼ 799 (800-2¼)	1300-2½ 799 (800-2½)

LANCASTER, TEXAS  
Amdt 1A 07OCT21

32°35'N-96°43'W

# RNAV (GPS) RWY 31

LANCASTER RGNL (LNC)

SC-2, 07 AUG 2025 to 04 SEP 2025

SC-2, 07 AUG 2025 to 04 SEP 2025