

(JPOOL7, TTT) 24305

AL-5936 (FAA)

LANCASTER RGNL (LNC)
LANCASTER, TEXAS

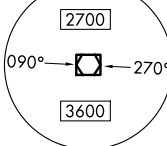
JOE POOL SEVEN DEPARTURE

LONE STAR DEP CON
125.2 343.65
CTAF
122.7

RADAR and DME required.

**TOP ALTITUDE:
ASSIGNED BY ATC**MAVERICK
113.1 TTT
Chan 78

MSA TTT 25 NM



NELYN

JASPA

TSA

DARTZ

ARDIA

WACO

115.3 ACT
Chan 100

LEONA

110.8 LOA
Chan 45

ELLVR

WINDU

TORN

BILEE

HOARY

COLLEGE STATION
113.3 CL
Chan 80

CENTEX

112.8 CWK
Chan 75

SAN ANTONIO

116.8 SAT
Chan 115NAVASOTA
115.9 TNV
Chan 106**TAKEOFF MINIMUMS**

Rwy 13: Standard.

Rwy 31: 300-1¼ or standard with minimum climb of 210'/NM to 800, or alternatively, with standard takeoff minimums and a normal 200'/NM climb gradient, takeoff must occur no later than 1300' prior to DER.

(CONTINUED ON FOLLOWING PAGE)

NOTE: Chart not to scale.

JOE POOL SEVEN DEPARTURE

(JPOOL7, TTT) 25JAN24

LANCASTER, TEXAS
LANCASTER RGNL (LNC)

SC-2, 10 JUL 2025 to 07 AUG 2025

SC-2, 10 JUL 2025 to 07 AUG 2025

(JPOOL8, TTT) 25219

AL-5936 (FAA)

LANCASTER RGNL (LNC)
LANCASTER, TEXAS

JOE POOL EIGHT DEPARTURE

LONE STAR DEP CON
125.2 343.65
CTAF
122.7

RADAR and DME required.

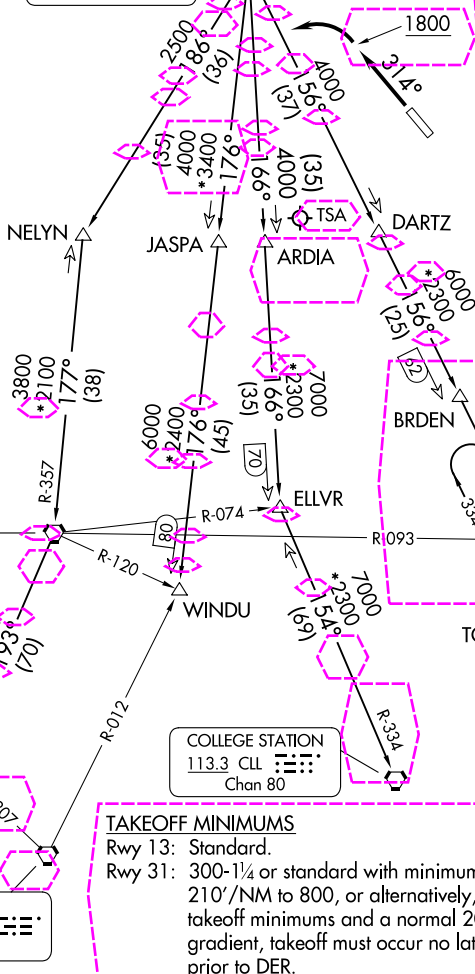
**TOP ALTITUDE:
ASSIGNED BY ATC**MAVERICK
113.1 TTT
Chan 78

MSA TTT 25 NM

2700

090° — 270°

3600



(CONTINUED ON FOLLOWING PAGE)

NOTE: Chart not to scale.

JOE POOL EIGHT DEPARTURE

(JPOOL8, TTT) 07AUG25

LANCASTER, TEXAS
LANCASTER RGNL (LNC)

SC-2, 07 AUG 2025 to 04 SEP 2025

SC-2, 07 AUG 2025 to 04 SEP 2025