

BEEVILLE, TEXAS

AL-5899 (FAA)

19115

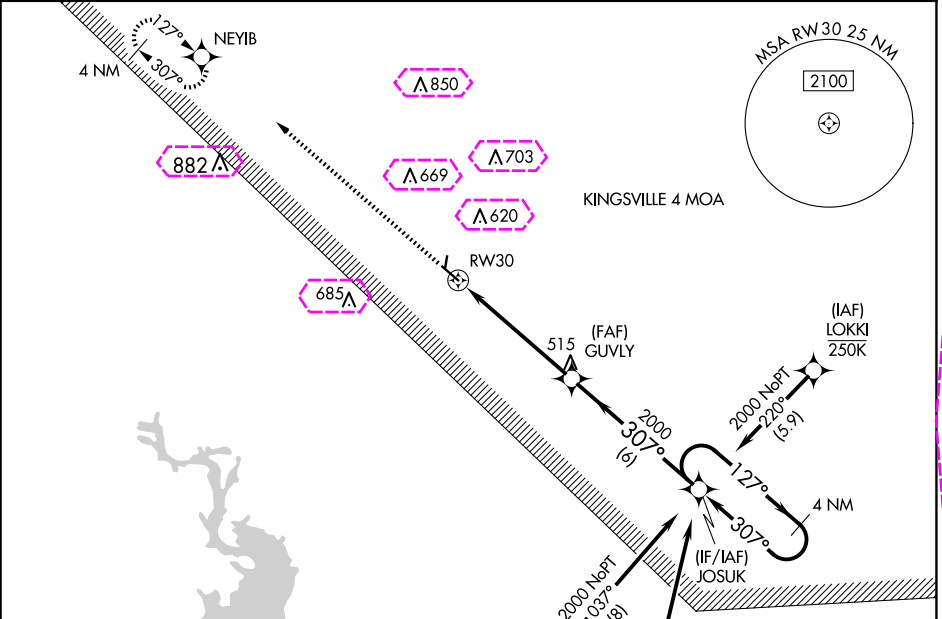
WAAS CH 53741 W30A	APP CRS 307°	Rwy Idg 4553 TDZE 262 Apt Elev 273
--	------------------------	---

RNAV (GPS) RWY 30
BEEVILLE MUNI (BEA)

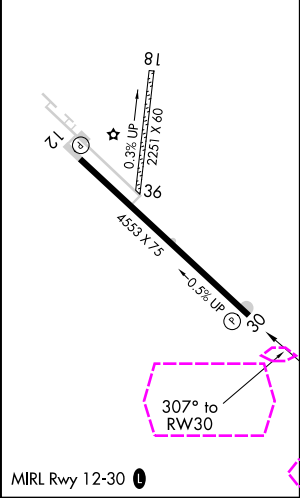
RNP APCH.

<p>▼ For uncompensated Baro-VNAV systems, LNAV/VNAV NA below -15°C (5°F) or above 54°C (130°F). Circling Rwy 18 and 36 NA at night. Rwy 30 helicopter visibility reduction below ¾ SM NA.</p>	MISSED APPROACH: Climb to 2000 direct NEYIB and hold.
---	---

AWOS-3 118.675	HOUSTON CENTER 134.6 322.5	UNICOM 122.8 (CTAF) 0
--------------------------	--------------------------------------	---------------------------------



ELEV 273	TDZE 262
----------	----------



2000	NEYIB	*LNAV only.	GUPLY	JOSUK	4 NM Holding Pattern
2000		*2.4 NM to RW30	2000	2000	127° → 2000
		2.4 NM	3 NM	6 NM	GP 3.00° TCH 43
CATEGORY	A	B	C	D	
LPV DA	517-1	255 (300-1)		NA	
LNAV/VNAV DA	540-1	278 (300-1)		NA	
LNAV MDA	1060-1 798 (800-1)	1060-1¼ 798 (800-1¼)	1060-2½ 798 (800-2½)	NA	
CIRCLING	1060-1 787 (800-1)	1060-1¼ 787 (800-1¼)	1060-2½ 787 (800-2½)	NA	

BEEVILLE, TEXAS
Amdt 1 24MAY18

28°22'N-97°48'W

BEEVILLE MUNI (BEA)
RNAV (GPS) RWY 30

SC-3, 10 JUL 2025 to 07 AUG 2025

SC-3, 10 JUL 2025 to 07 AUG 2025

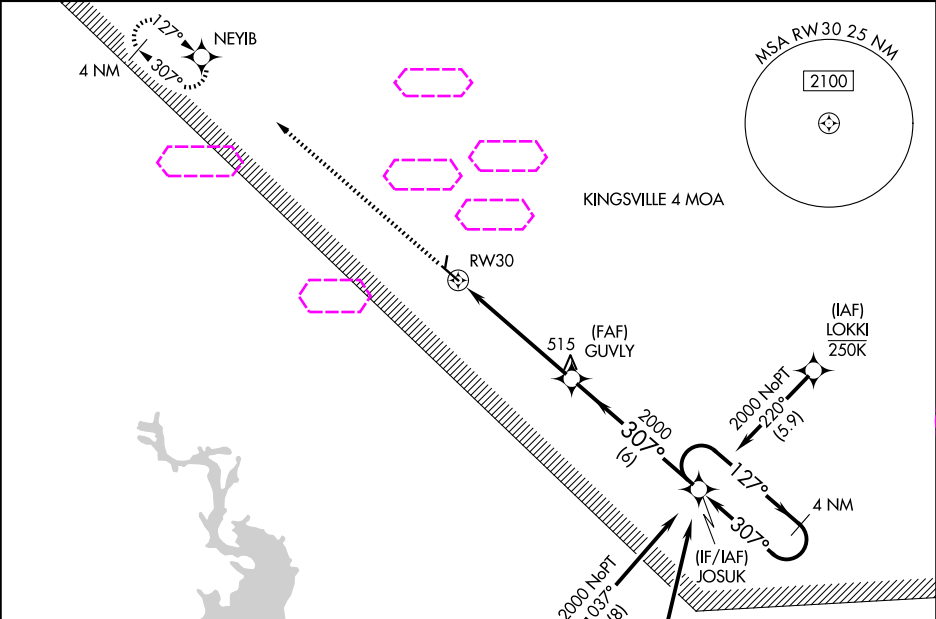
WAAS CH 53741 W30A	APP CRS 307°	Rwy Ldg TDZE 262 Apt Elev 273
--	------------------------	---

RNAV (GPS) RWY 30

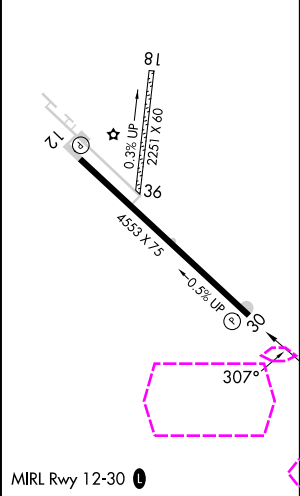
BEEVILLE MUNI (BEA)

RNP APCH. ▼ For uncompensated Baro-VNAV systems, LNAV/VNAV NA below -15°C (5°F) or above 54°C (130°F). Circling Rwy 18 and 36 NA at night. ▲ Rwy 30 helicopter visibility reduction below ¾ SM NA.	MISSED APPROACH: Climb to 2000 direct NEYIB and hold.
--	---

AWOS-3 118.675	HOUSTON CENTER 134.6 322.5	UNICOM 122.8 (CTAF) 0
--------------------------	--------------------------------------	---------------------------------



ELEV 273	TDZE 262
----------	----------



2000	NEYIB	*LNAV only.	GUPLY	JOSUK	4 NM Holding Pattern
2000		*2.4 NM to RW30	2000	2000	127° → 2000
		2.4 NM	3 NM	6 NM	← 307° 2000
CATEGORY	A	B	C	D	
LPV DA	517-1	255 (300-1)		NA	
LNAV/VNAV DA	540-1	278 (300-1)		NA	
LNAV MDA	1060-1 798 (800-1)	1060-1¼ 798 (800-1¼)	1060-2½ 798 (800-2½)	NA	
CIRCLING	1060-1 787 (800-1)	1060-1¼ 787 (800-1¼)	1060-2½ 787 (800-2½)	NA	