

OLIVE BRANCH, MISSISSIPPI

AL-5883 (FAA)

25107

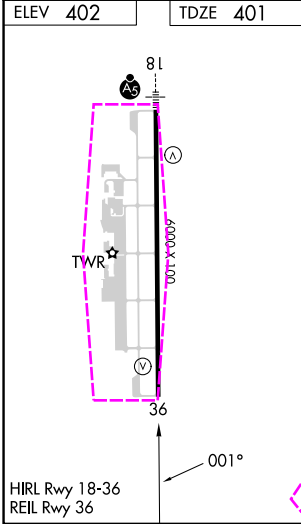
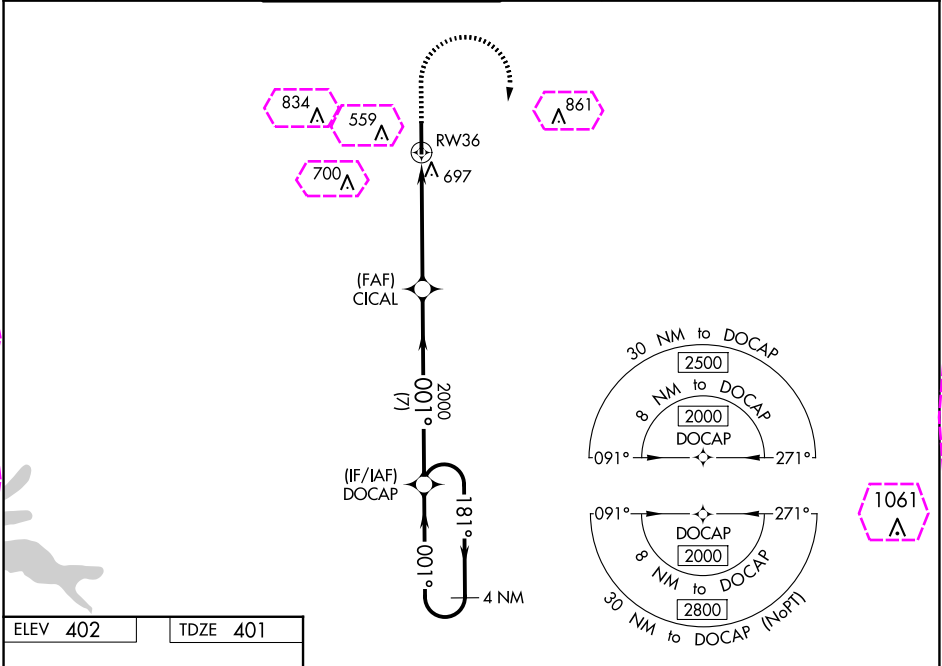
WAAS CH <b>86735</b> <b>W36A</b>	APP CRS <b>001°</b>	Rwy Idg <b>6000</b> TDZE <b>401</b> Apt Elev <b>402</b>
--	------------------------	---

**RNAV (GPS) RWY 36**  
OLIVE BRANCH/TAYLOR FLD (OLV)

**▼** For uncompensated Baro-VNAV systems, LNAV/VNAV NA below -1.5°C (5°F) or above 54°C (130°F). DME/DME RNP-0.3 NA. When local altimeter setting not received, use Memphis Int'l altimeter setting and increase all DA 32 feet and all MDA 40 feet; increase LPV and LNAV/VNAV all Cats and LNAV Cats C and D and Circling Cats C and D visibility ¼ mile. VDP and Baro-VNAV NA with Memphis Int'l altimeter setting. Rwy 36 helicopter visibility reduction below ¾ SM NA.

**MISSED APPROACH:**  
Climb to 1500 then climbing right turn to 2000 direct DOCAP and hold.

ATIS <b>119.925</b>	MEMPHIS APP CON <b>125.8 338.3</b>	OLIVE BRANCH TOWER ★ <b>125.275 (CTAF) 0</b>	GND CON <b>121.2</b>	CLNC DEL <b>121.2</b>	CLNC DEL <b>121.3</b> (When twr closed)	UNICOM <b>122.95</b>
------------------------	---------------------------------------	---	-------------------------	--------------------------	---	-------------------------



1500	2000	DOCAP	VGSi and RNAV glidepath not coincident (VGSi Angle 3.00/TCH 31).			
*LNAV only		*1.8 NM to RW36	CICAL	DOCAP	4 NM Holding Pattern	
RW36		1.8 NM	3.1 NM	7 NM	181°	2000
					001°	GP 3.00° TCH 45
CATEGORY	A	B	C	D		
LPV DA	709-1		308 (400-1)			
LNAV/VNAV DA	915-1¾		514 (600-1¾)			
LNAV MDA	1000-1	599 (600-1)	1000-1¾	599 (600-1¾)		
<b>CIRCLING</b>	1060-1	658 (700-1)	1060-1¾	798 (800-2½)	1200-2½	798 (800-2½)

OLIVE BRANCH, MISSISSIPPI  
Amdt 1A 25MAY17

34°59'N-89°47'W

OLIVE BRANCH/TAYLOR FLD (OLV)  
**RNAV (GPS) RWY 36**

SC-4, 10 JUL 2025 to 07 AUG 2025

SC-4, 10 JUL 2025 to 07 AUG 2025

OLIVE BRANCH, MISSISSIPPI

AL-5883 (FAA)

25219

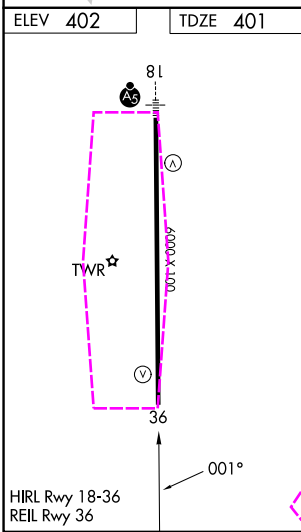
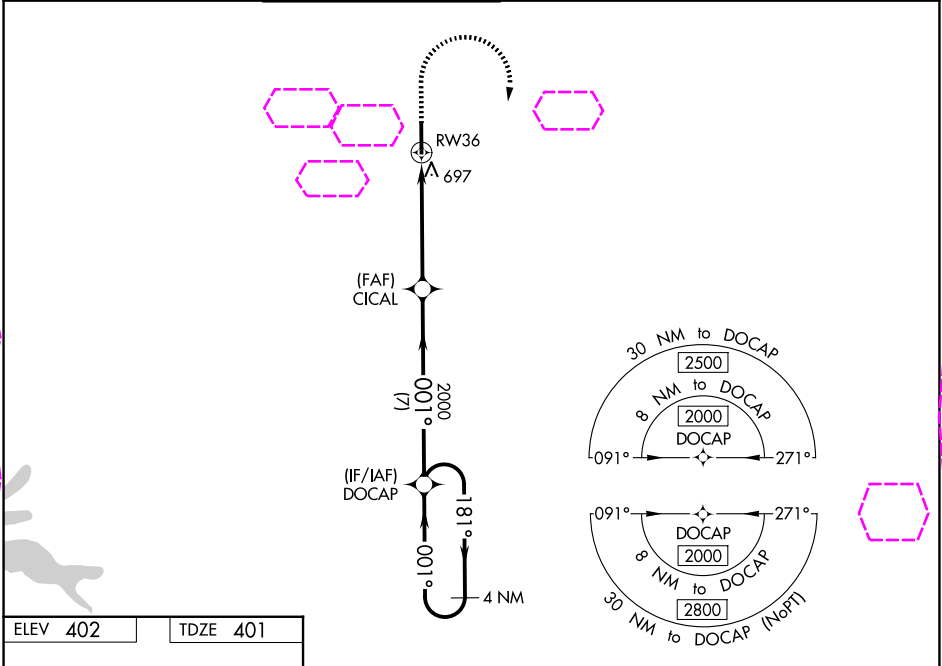
WAAS CH <b>86735</b> <b>W36A</b>	APP CRS <b>001°</b>	Rwy Ldg TDZE <b>401</b> Apt Elev <b>402</b>
--	------------------------	---

**RNAV (GPS) RWY 36**  
OLIVE BRANCH/TAYLOR FLD (OLV)

▼ For uncompensated Baro-VNAV systems, LNAV/VNAV NA below -1.5°C (5°F) or above 54°C (130°F). DME/DME RNP-0.3 NA. When local altimeter setting not received, use Memphis Int'l altimeter setting and increase all DA 32 feet and all MDA 40 feet; increase LPV and LNAV/VNAV all Cats and LNAV Cats C and D and Circling Cats C and D visibility ¼ mile. VDP and Baro-VNAV NA with Memphis Int'l altimeter setting. Rwy 36 helicopter visibility reduction below ¾ SM NA.

MISSED APPROACH:  
Climb to 1500 then  
climbing right turn  
to 2000 direct  
DOCAP and hold.

ATIS <b>119.925</b>	MEMPHIS APP CON <b>125.8 338.3</b>	OLIVE BRANCH TOWER ★ <b>125.275 (CTAF) 0</b>	GND CON <b>121.2</b>	CLNC DEL <b>121.2</b>	CLNC DEL <b>121.3</b> (When twr closed)	UNICOM <b>122.95</b>
------------------------	---------------------------------------	---	-------------------------	--------------------------	---	-------------------------



1500	2000	DOCAP	VGSi and RNAV glidepath not coincident (VGSi Angle 3.00/TCH 31).			
*LNAV only		*1.8 NM to RW36	CICAL	DOCAP	4 NM Holding Pattern	
RW36		1.8 NM	3.1 NM	7 NM	181°	2000
CATEGORY		A	B	C	D	
LPV DA		709-1		308 (400-1)		
LNAV/VNAV DA		915-1¾		514 (600-1¾)		
LNAV MDA		1000-1	599 (600-1)	1000-1¾	599 (600-1¾)	
CIRCLING		1060-1	658 (700-1)	1060-1¾	1200-2½	798 (800-2½)

OLIVE BRANCH, MISSISSIPPI  
Amdt 1A 25MAY17

34°59'N-89°47'W

OLIVE BRANCH/TAYLOR FLD (OLV)  
**RNAV (GPS) RWY 36**

SC-4, 07 AUG 2025 to 04 SEP 2025

SC-4, 07 AUG 2025 to 04 SEP 2025