

OLIVE BRANCH, MISSISSIPPI

AL-5883 (FAA)

25107

WAAS CH 61199 W18A	APP CRS 181°	Rwy Idg 6000 TDZE 402 Apt Elev 402
--	------------------------	---

RNAV (GPS) RWY 18

OLIVE BRANCH/TAYLOR FLD (OLV)

⚠

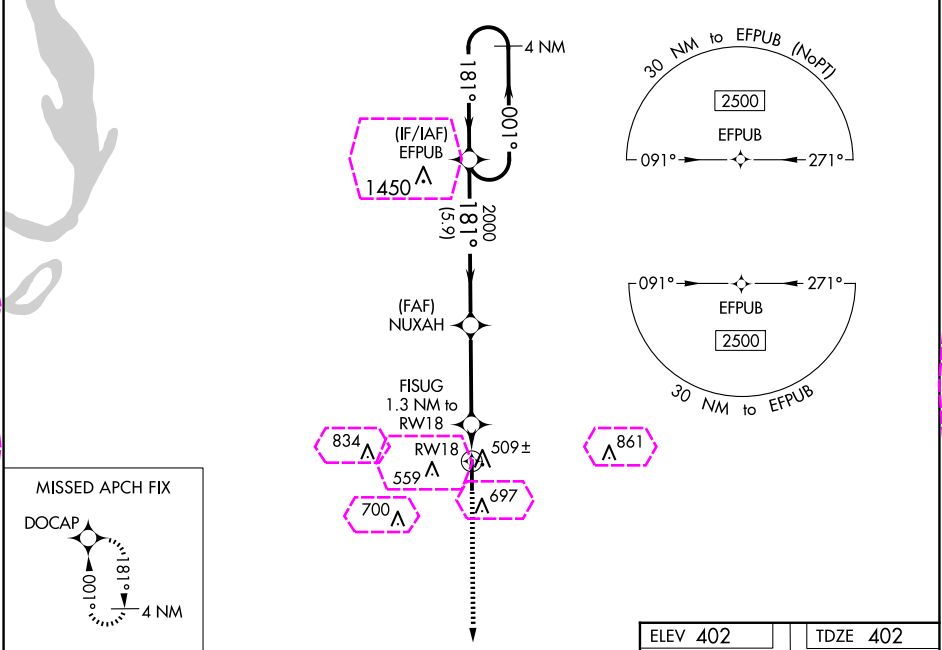
For uncompensated Baro-VNAV systems, LNAV/VNAV NA below -15°C (5°F) or above 54°C (130°F). DME/DME RNP-0.3 NA. When local altimeter setting not received, use Memphis Intl altimeter setting and increase all DA 32 feet and all MDA 40 feet; increase LNAV/VNAV all Cats visibility 1/8 mile and Circling Cats C and D visibility 1/4 mile.

MALSR

MISSED APPROACH:

Climb to 2000 direct
DOCAP and hold.

ATIS 119.925	MEMPHIS APP CON 125.8 338.3	OLIVE BRANCH TOWER ★ 125.275 (CTAF) 0	GND CON 121.2	CLNC DEL 121.2	CLNC DEL 121.3 (When twr closed)	UNICOM 122.95
------------------------	---------------------------------------	---	-------------------------	--------------------------	---	-------------------------



4 NM Holding Pattern

EFAPUB

2500 ← 001°

181° →

GP 3.00°

TCH 51

2000

NUXAH

FISUG 1.3 NM to RWY 18

RWY 18

*LNAV only

5.9 NM

3.6 NM

1.3 NM

*860

CATEGORY	A	B	C	D
LPV DA	602-1/2 200 (200-1/2)			
LNAV/VNAV DA	691-1/2 289 (300-1/2)			
LNAV MDA	760-1/2	358 (400-1/2)	760-5/8	358 (400-5/8)
CIRCLING	1060-1	658 (700-1)	1060-1 3/4 658 (700-1 3/4)	1200-2 1/2 798 (800-2 1/2)

ELEV 402

TDZE 402

181°

81

AS

4000-X-100

TWR

36

HIRL Rwy 18-36

REIL Rwy 36

OLIVE BRANCH, MISSISSIPPI
Amdt 3A 25MAY17

34°59'N-89°47'W

OLIVE BRANCH/TAYLOR FLD (OLV)
RNAV (GPS) RWY 18

OLIVE BRANCH, MISSISSIPPI

AL-5883 (FAA)

25219

WAAS CH 61199 W18A	APP CRS 181°	Rwy Ldg TDZE 402 Apt Elev 402
--	------------------------	---

RNAV (GPS) RWY 18

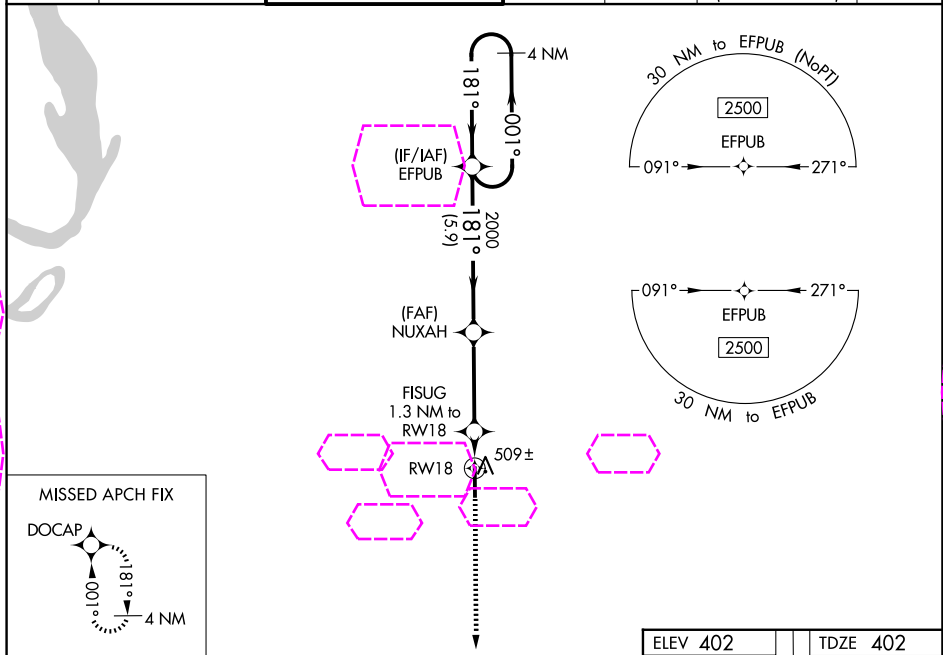
OLIVE BRANCH/TAYLOR FLD (OLV)

⚠ For uncompensated Baro-VNAV systems, LNAV/VNAV NA below -15°C (5°F) or above 54°C (130°F). DME/DME RNP-0.3 NA. When local altimeter setting not received, use Memphis Intl altimeter setting and increase all DA 32 feet and all MDA 40 feet; increase LNAV/VNAV all Cats visibility 1/8 mile and Circling Cats C and D visibility 1/4 mile.

MALSR

MISSED APPROACH:
Climb to 2000 direct
DOCAP and hold.

ATIS 119.925	MEMPHIS APP CON 125.8 338.3	OLIVE BRANCH TOWER ★ 125.275 (CTAF) 0	GND CON 121.2	CLNC DEL 121.2	CLNC DEL 121.3 (When twr closed)	UNICOM 122.95
------------------------	---------------------------------------	---	-------------------------	--------------------------	---	-------------------------



4 NM Holding Pattern EFAPUB

2500 ← 001° 181° →

GP 3.00° TCH 51

NUXAH 2000

FISUG 1.3 NM to RWY 18

RWY 18

*LNAV only

*860

5.9 NM 3.6 NM 1.3 NM

CATEGORY	A	B	C	D
LPV DA	602-1/2		200 (200-1/2)	
LNAV/VNAV DA	691-1/2		289 (300-1/2)	
LNAV MDA	760-1/2	358 (400-1/2)	760-5/8	358 (400-5/8)
CIRCLING	1060-1	658 (700-1)	1060-1 3/4 658 (700-1 3/4)	1200-2 1/2 798 (800-2 1/2)

ELEV 402 TDZE 402

181° 81

AS

TWR ★

4000-X-100

36

HIRL Rwy 18-36
REIL Rwy 36

OLIVE BRANCH, MISSISSIPPI
Amdt 3A 25MAY17

34°59'N-89°47'W

OLIVE BRANCH/TAYLOR FLD (OLV)
RNAV (GPS) RWY 18