

LOC/DME I-EVO 111.55 Chan 52 (Y)	APP CRS 001°	Rwy Idg 6000 TDZE 401 Apt Elev 402
--	------------------------	---

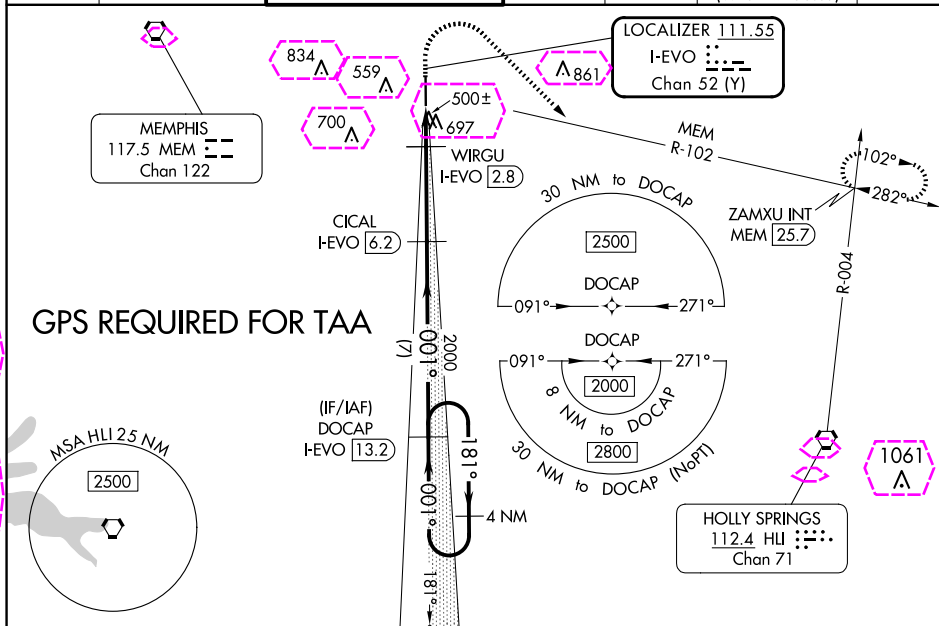
LOC RWY 36

OLIVE BRANCH/TAYLOR FLD (OLV)

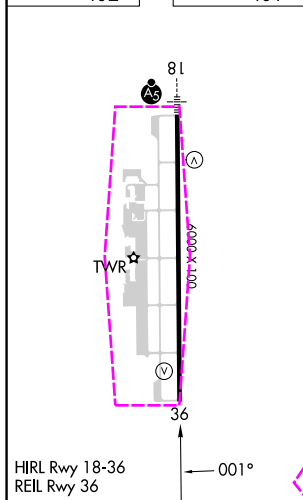
T When local altimeter setting not received, use Memphis Intl altimeter
A setting and increase all MDA 40 feet; increase S-LOC 36 Cats C and
D visibility $\frac{1}{8}$ mile and Circling Cats C and D visibility $\frac{1}{4}$ mile.
Rwy 36 helicopter visibility reduction below $\frac{3}{4}$ SM NA. DME required.

MISSED APPROACH: Climb to 1100 then climbing right turn to 2500 on heading 134° and MEM VORTAC R-102 to ZAMXU INT/MEM 25.7 DME and hold.

ATIS 119.925	MEMPHIS APP CON 125.8 338.3	OLIVE BRANCH TOWER ★ 125.275 (CTAF) 0	GND CON 121.2	CLNC DEL 121.2	CLNC DEL 121.3 (When twr closed)	UNICOM 122.95
------------------------	---------------------------------------	---	-------------------------	--------------------------	---	-------------------------



ELEV	402		TDZE	401
------	-----	--	------	-----



OLIVE BRANCH, MISSISSIPPI

Amdt 1A 25MAY17

34°59'N-89°47'W

OLIVE BRANCH/TAYLOR FLD (OLV)

LOC RWY 36

1100 ↑	2500 hdg 134°	MEM R-102	ZAMXU INT	VGSI and descent angles not coincident (VGSI Angle 3.00/TCH 31).			
CATEGORY	A		B		C		D
S-36			760-1		359 (400-1)		
C CIRCLING	1060-1	658 (700-1)		1060-1 ³ / ₄ 658 (700-1 ³ / ₄)		1200-2 ¹ / ₂ 798 (800-2 ¹ / ₂)	

LOC/DME I-EVO <u>111.55</u> Chan 52(Y)	APP CRS 001°	Rwy Ldg 6000 TDZE 401 Apt Elev 402
--	-----------------	---

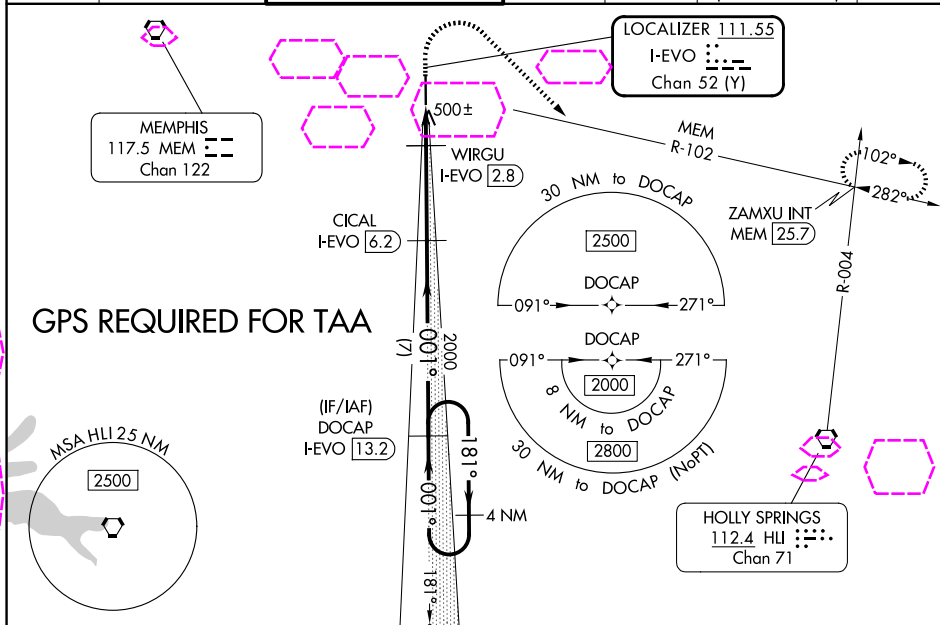
LOC RWY 36

OLIVE BRANCH/TAYLOR FLD (OLV)

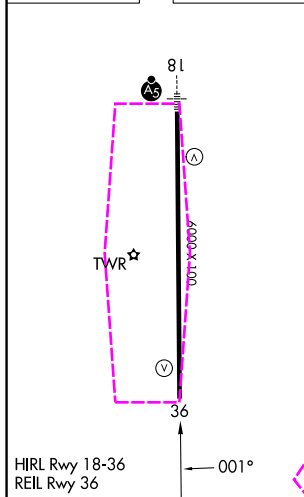
T When local altimeter setting not received, use Memphis Intl altimeter
A setting and increase all MDA 40 feet; increase S-LOC 36 Cats C and
D visibility $\frac{1}{8}$ mile and Circling Cats C and D visibility $\frac{1}{4}$ mile.
Rwy 36 helicopter visibility reduction below $\frac{3}{4}$ SM NA. DME required.

MISSED APPROACH: Climb to 1100 then climbing right turn to 2500 on heading 134° and MEM VORTAC R-102 to ZAMXU INT/MEM 25.7 DME and hold.

ATIS 119.925	MEMPHIS APP CON 125.8 338.3	OLIVE BRANCH TOWER ★ 125.275 (CTAF) 0	GND CON 121.2	CLNC DEL 121.2	CLNC DEL 121.3 (When twr closed)	UNICOM 122.95
------------------------	---------------------------------------	---	-------------------------	--------------------------	---	-------------------------



ELEV	402		TDZE	401
------	-----	--	------	-----



2000 NoPT to DOCAP
316° (3.1) and
LOC (9.9)

(IAF)
VOSFY
HLI 17

(CFBSN) X

ALTERNATE MISSED
APCH FIX

HOLLY SPRINGS
HU 112.4
Chan 71

112°
292°
R-112

1100 ↑	2500 hdg 134°	MEM R-102	ZAMXU INT	VGSI and descent angles not coincident (VGSI Angle 3.00/TCH 31).			
				4 NM Holding Pattern			
CATEGORY	A	B	C	D			
S-36	760-1			359 (400-1)			
CIRCLING	1060-1	658 (700-1)	1060-1 ³ / ₄ 658 (700-1 ³ / ₄)	1200-2 ¹ / ₂ 798 (800-2 ¹ / ₂)			

OLIVE BRANCH, MISSISSIPPI

Amdt 1A 25MAY17

OLIVE BRANCH/TAYLOR FLD (OLV)

34°59'N-89°47'W

LOC RWY 36

SC-4, 07 AUG 2025 to 04 SEP 2025

SC-4, 07 AUG 2025 to 04 SEP 2025