

OLIVE BRANCH, MISSISSIPPI

AL-5883 (FAA)


25107

LOC/DME I-OLV 109.3 Chan 30	APP CRS 181°	Rwy Idg 6000 TDZE 402 Apt Elev 402
------------------------------------------	------------------------	------------------------------------------------------------------------

ILS or LOC RWY 18


OLIVE BRANCH/TAYLOR FLD (OLV)

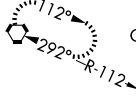
⚠ When local altimeter setting not received, use Memphis Intl altimeter setting and increase all DA 32 feet and all MDA 40 feet; increase S-LOC 18 Cats C and D visibility $\frac{1}{8}$ mile and Circling Cats C and D visibility $\frac{1}{4}$ mile; increase WIMUB fix minimums Circling Cats C and D visibility $\frac{1}{4}$ mile.

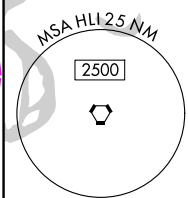
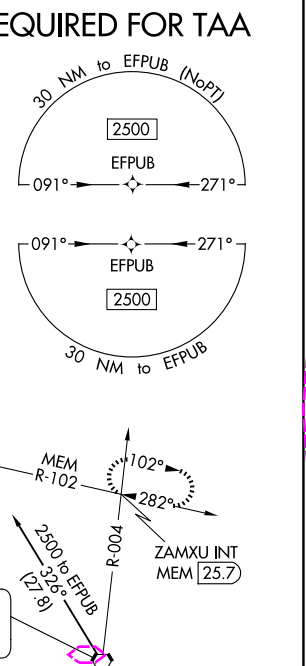
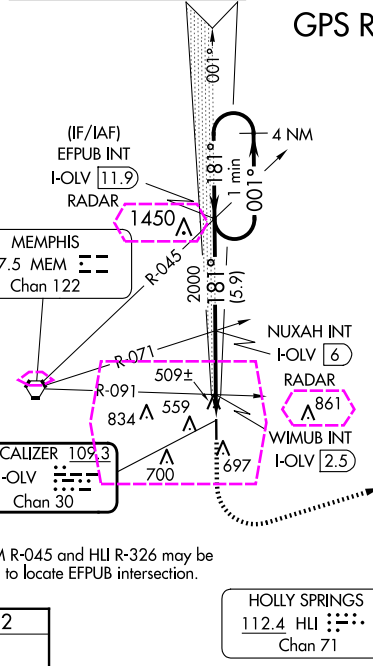
MALSR

MISSED APPROACH: Climb to 1100 then climbing left turn to 2500 on heading 074° and on MEM VORTAC R-102 to ZAMXU INT/MEM 25.7 DME and hold.

ATIS 119.925	MEMPHIS APP CON 125.8 338.3	OLIVE BRANCH TOWER ★ 125.275 (CTAF) 0	GND CON 121.2	CLNC DEL 121.2	CLNC DEL 121.3 (When twr closed)	UNICOM 122.95
------------------------	---------------------------------------	-------------------------------------------------	-------------------------	--------------------------	-----------------------------------------------	-------------------------

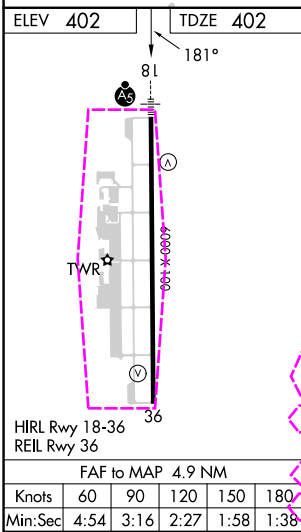
ALTERNATE MISSED APCH FIX

HOLLY SPRINGS
HU 
112.4
Chan 71





MEM R-045 and HLI R-326 may be used to locate EFFUB intersection.



One Minute or 4 NM Holding Pattern				EFFUB INT I-OLV 11.9 RADAR	NUXAH INT I-OLV 6 RADAR	1100	2500	MEM R-102	ZAMXU INT
2500 ← 001° 181° → 181°				2000	2000	2000	2000	2500	2500
*900 when using Memphis Intl altimeter setting.				GP 3.00° TCH 51					
CATEGORY				A	B	C	D		
S-ILS 18				602- $\frac{1}{2}$ 200 (200- $\frac{1}{2}$)					
S-LOC 18				860- $\frac{1}{2}$ 458 (500- $\frac{1}{2}$)					
CIRCLING				1060-1 658 (700-1)					
WIMUB FIX MINIMUMS (DUAL VOR RECEIVERS OR DME REQUIRED)									
S-LOC 18				760- $\frac{1}{2}$ 358 (400- $\frac{1}{2}$)					
CIRCLING				1060-1 658 (700-1)					
Knots				60	90	120	150	180	
Min:Sec				4:54	3:16	2:27	1:58	1:38	

OLIVE BRANCH, MISSISSIPPI
Amdt 3A 25MAY17

34°59'N-89°47'W

OLIVE BRANCH/TAYLOR FLD (OLV)
ILS or LOC RWY 18

SC-4, 10 JUL 2025 to 07 AUG 2025

SC-4, 10 JUL 2025 to 07 AUG 2025

OLIVE BRANCH, MISSISSIPPI

AL-5883 (FAA)

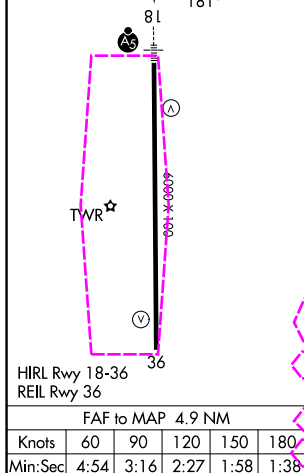
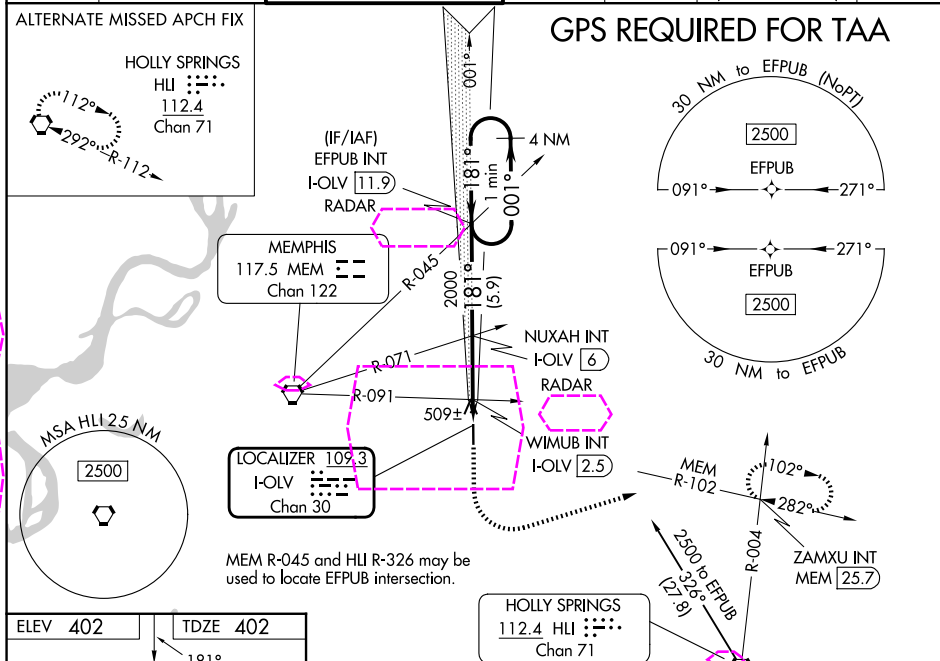
25219

LOC/DME I-OLV 109.3 Chan 30	APP CRS 181°	Rwy Ldg 6000 TDZE 402 Apt Elev 402
------------------------------------------	------------------------	------------------------------------------------------------------------

ILS or LOC RWY 18

OLIVE BRANCH/TAYLOR FLD (OLV)

<div><div><div>▼</div><div>▲</div></div><div>When local altimeter setting not received, use Memphis Intl altimeter setting and increase all DA 32 feet and all MDA 40 feet; increase S-LOC 18 Cats C and D visibility 1/8 mile and Circling Cats C and D visibility 1/4 mile; increase WIMUB fix minimums Circling Cats C and D visibility 1/4 mile.</div></div>			<div><div>MALSR</div><div><div>AS</div><div><div><div></div><div></div><div></div><div></div><div></div></div></div></div></div>	<div>MISSED APPROACH: Climb to 1100 then climbing left turn to 2500 on heading 074° and on MEM VORTAC R-102 to ZAMXU INT/MEM 25.7 DME and hold.</div>			
<div>ATIS</div> <div>119.925</div>	<div>MEMPHIS APP CON</div> <div>125.8 338.3</div>	<div>OLIVE BRANCH TOWER ★</div> <div>125.275 (CTAF) 0</div>	<div>GND CON</div> <div>121.2</div>	<div>CLNC DEL</div> <div>121.2</div>	<div>CLNC DEL</div> <div>121.3</div> <div>(When twr closed)</div>	<div>UNICOM</div> <div>122.95</div>	



One Minute
or 4 NM
Holding Pattern

EFPUB INT
I-OLV 11.9
RADAR

NUXAH INT
I-OLV 6
RADAR

1100
↑
hdg 074°

2500

MEM R-102

ZAMXU INT

2500 ← 001°
181° → 181°

2000

2000

WIMUB INT
I-OLV 2.5

I-OLV 1.1

*900 when using Memphis Intl
altimeter setting.

GP 3.00°
TCH 51

*LOC only

5.9 NM

3.5 NM

1.4 NM

CATEGORY	A	B	C	D
S-ILS 18	602-½ 200 (200-½)			
S-LOC 18	860-½ 458 (500-½)		860-¾ 458 (500-¾)	
CIRCLING	1060-1 658 (700-1)		1060-1¾ 658 (700-1¾)	1200-2½ 798 (800-2½)
WIMUB FIX MINIMUMS (DUAL VOR RECEIVERS OR DME REQUIRED)				
S-LOC 18	760-½ 358 (400-½)		760-⅝ 358 (400-⅝)	
CIRCLING	1060-1 658 (700-1)		1060-1¾ 658 (700-1¾)	1200-2½ 798 (800-2½)

OLIVE BRANCH, MISSISSIPPI

Amdt 3A 25MAY17

34°59'N-89°47'W

OLIVE BRANCH/TAYLOR FLD (OLV)

ILS or LOC RWY 18

SC-4, 07 AUG 2025 to 04 SEP 2025

SC-4, 07 AUG 2025 to 04 SEP 2025