

DENTON, TEXAS

AL-5866 (FAA)

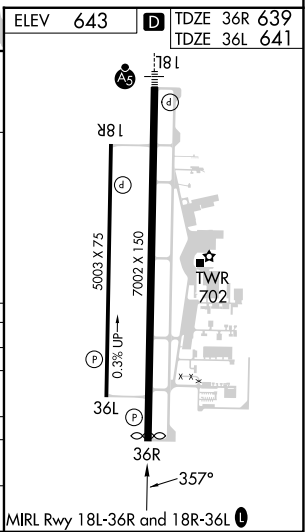
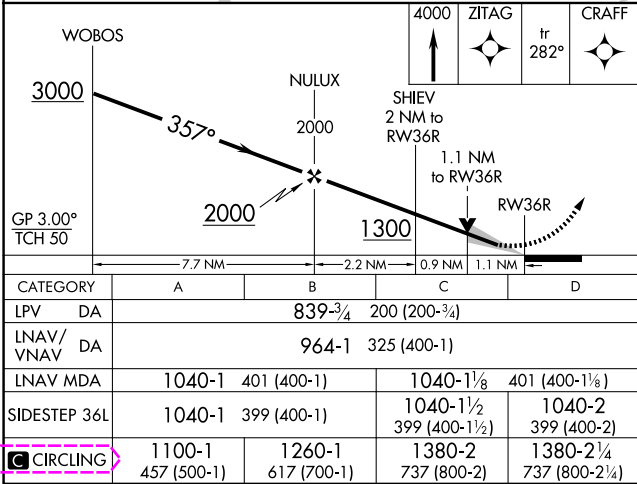
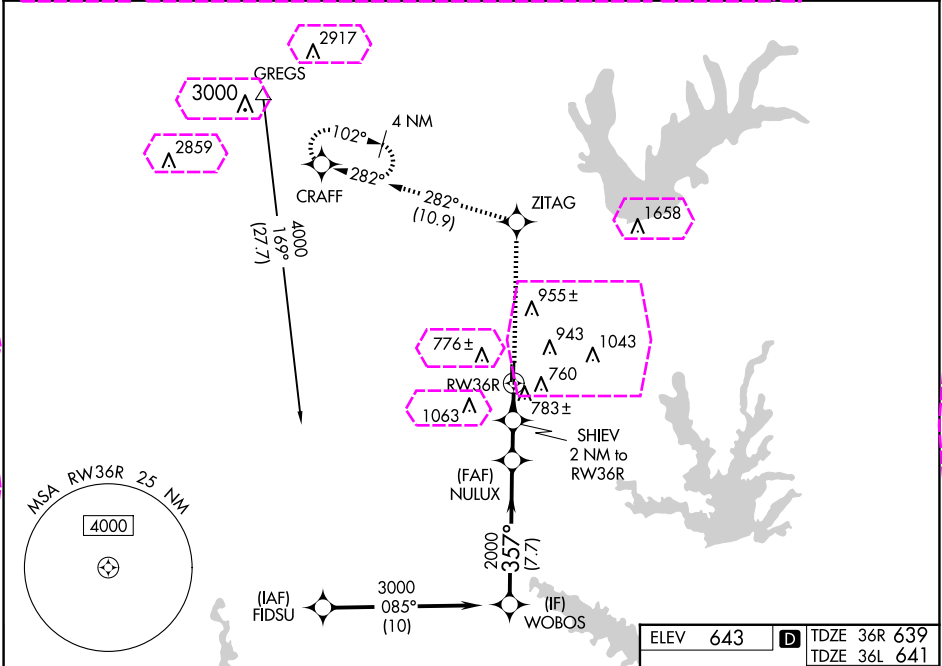
24305

WAAS CH <b>87043</b> <b>W36A</b>	APP CRS <b>357°</b>	Rwy Idg TDZE Apt Elev	36R <b>6502</b> <b>639</b> <b>643</b>	36L <b>5003</b> <b>641</b> <b>643</b>
--	------------------------	-----------------------------	--	--

# RNAV (GPS) RWY 36R

DENTON ENTERPRISE (D'TO)

RNP APCH-GPS.			MISSED APPROACH: Climb to 4000 direct ZITAG and on track 282° to CRAFT and hold.		
ATIS <b>119.325</b>	LONE STAR APP CON <b>118.1 306.95</b>	DENTON TOWER ★ <b>119.95 (CTAF)</b>	GND CON <b>123.95</b>	CLNC DEL <b>123.95</b>	UNICOM <b>122.95</b>



DENTON, TEXAS

AL-5866 (FAA)

25219

WAAS CH <b>87043</b> <b>W36A</b>	APP CRS <b>357°</b>	Rwy Ldg TDZE Apt Elev	36R <b>6502</b> <b>639</b> <b>643</b>	36L <b>5003</b> <b>641</b> <b>643</b>
--	------------------------	-----------------------------	--	--

# RNAV (GPS) RWY 36R

DENTON ENTERPRISE (D'TO)

RNP APCH-GPS.

▼  
▲

For uncompensated Baro-VNAV systems, LNAV/VNAV NA below -9°C or above 54°C.

MISSED APPROACH: Climb to 4000 direct ZITAG and on track 282° to CRAFT and hold.

ATIS <b>119.325</b>	LONE STAR APP CON <b>118.1 306.95</b>	DENTON TOWER ★ <b>119.95</b> (CTAF) <b>0</b>	GND CON <b>123.95</b>	CLNC DEL <b>123.95</b>
------------------------	--	---	--------------------------	---------------------------

