

DENTON, TEXAS

AI-5866 (FAA)

24305

WAAS CH 56543 W36B	APP CRS 357°	Rwy Idg 5003 TDZE 641 Apt Elev 643	36L 6502 639 643	36R 6502 639 643
--	------------------------	--	--	--

RNAV (GPS) RWY 36L

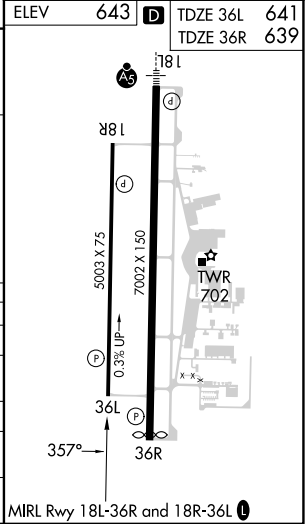
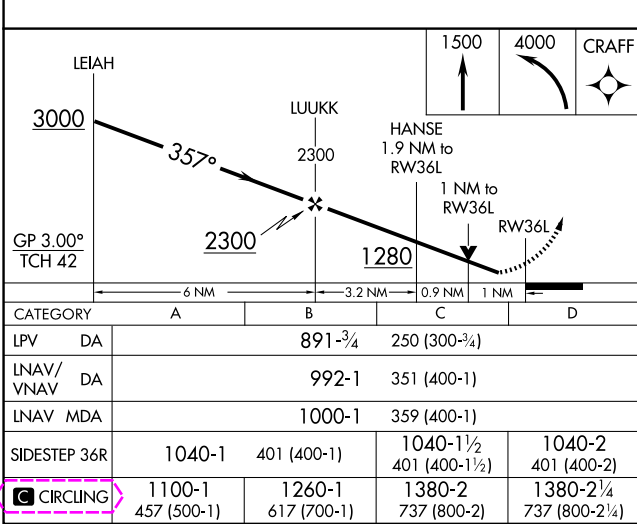
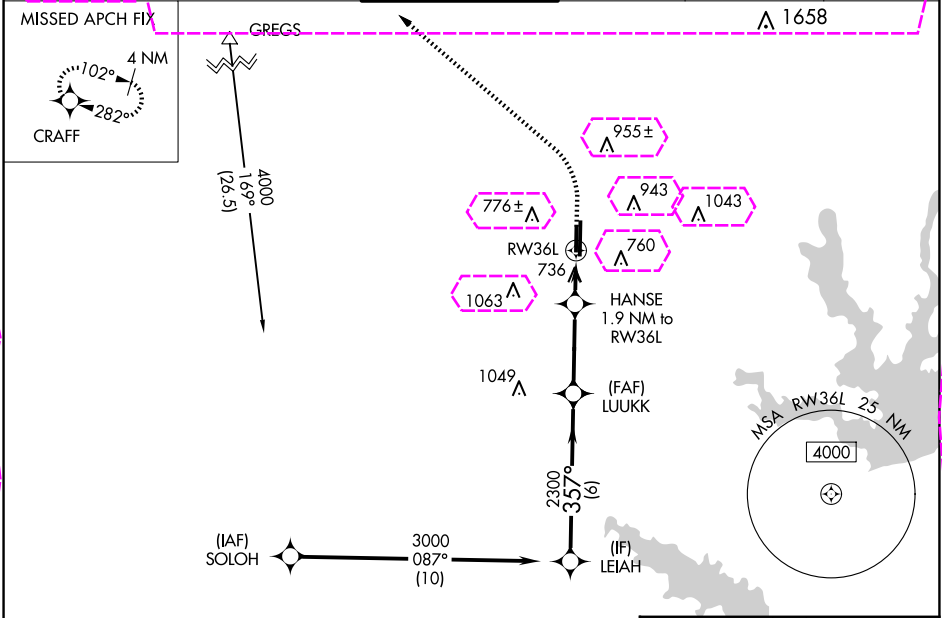
DENTON ENTERPRISE (DTON)

RNP APCH - GPS.

⚠ For uncompensated Baro-VNAV systems, LNAV/VNAV NA below -9°C or above 54°C. Rwy 36L helicopter visibility reduction below 3/4 SM NA.

MISSED APPROACH: Climb to 1500 then climbing left turn to 4000 direct CRAFT and hold, continue climb-in-hold to 4000.

ATIS 119.325	LONE STAR APP CON 118.1 306.95	DENTON TOWER ★ 119.95 (CTAF)	GND CON 123.95	CLNC DEL 123.95	UNICOM 122.95
------------------------	--	--	--------------------------	---------------------------	-------------------------



DENTON, TEXAS

Orig-B 16MAY24

33°12'N-97°12'W

RNAV (GPS) RWY 36L

DENTON ENTERPRISE (DTON)

SC-2, 10 JUL 2025 to 07 AUG 2025

SC-2, 10 JUL 2025 to 07 AUG 2025

DENTON, TEXAS

AI-5866 (FAA)

25219

WAAS CH 56543 W36B	APP CRS 357°	Rwy Ldg TDZE Apt Elev	36L 5003 641 643	36R 6502 639 643
--	------------------------	-----------------------------	--	--

RNAV (GPS) RWY 36L

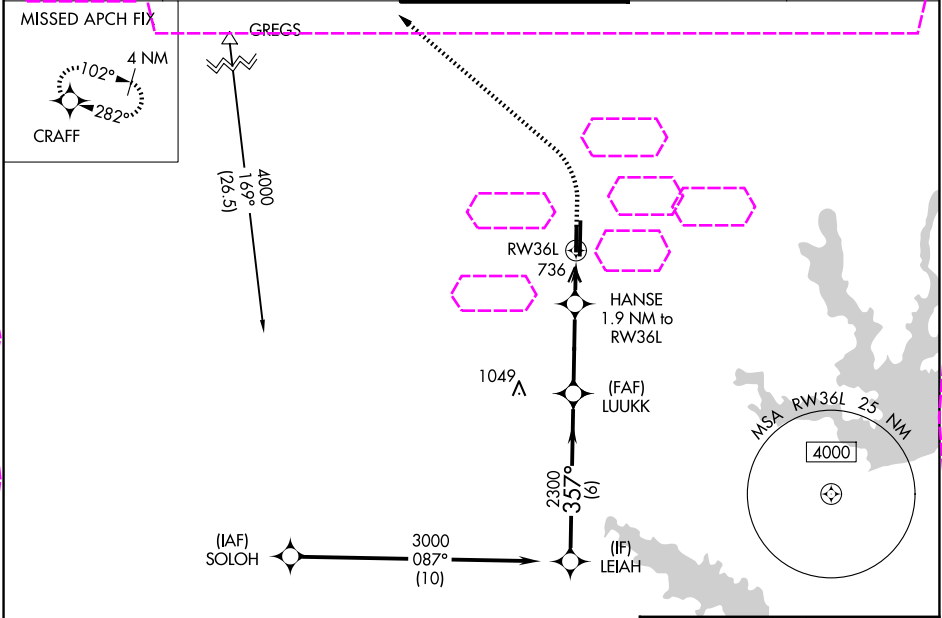
DENTON ENTERPRISE (DTON)

RNP APCH - GPS.

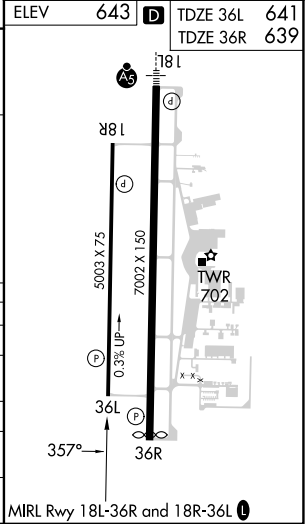
For uncompensated Baro-VNAV systems, LNAV/VNAV NA below -9°C or above 54°C. Rwy 36L helicopter visibility reduction below 3/4 SM NA.

MISSED APPROACH: Climb to 1500 then climbing left turn to 4000 direct CRAFT and hold, continue climb-in-hold to 4000.

ATIS 119.325	LONE STAR APP CON 118.1 306.95	DENTON TOWER ★ 119.95 (CTAF) 0	GND CON 123.95	CLNC DEL 123.95
------------------------	--	--	--------------------------	---------------------------



LEIAH	3000	357°	2300	LUUKK	2300	HANSE 1.9 NM to RW36L	1280	RW36L
GP 3.00° TCH 42	6 NM	3.2 NM	0.9 NM	1 NM				
CATEGORY	A	B	C	D				
LPV DA		891-3/4	250 (300-3/4)					
LNAV/VNAV DA		992-1	351 (400-1)					
LNAV MDA		1000-1	359 (400-1)					
SIDESTEP 36R	1040-1	401 (400-1)	1040-1 1/2 401 (400-1 1/2)	1040-2 401 (400-2)				
CIRCLING	1100-1 457 (500-1)	1260-1 617 (700-1)	1380-2 737 (800-2)	1380-2 1/4 737 (800-2 1/4)				



SC-2, 07 AUG 2025 to 04 SEP 2025

SC-2, 07 AUG 2025 to 04 SEP 2025

DENTON, TEXAS
Orig-B 16MAY24

33°12'N-97°12'W

DENTON ENTERPRISE (DTON)
RNAV (GPS) RWY 36L