

DENTON, TEXAS

AL-5866 (FAA)

24305

WAAS CH 97643 W18B	APP CRS 177°	Rwy Idg TDZE Apt Elev	18R 5003 643 643	18L 6502 642 643
--	------------------------	-----------------------------	--	--

RNAV (GPS) RWY 18R

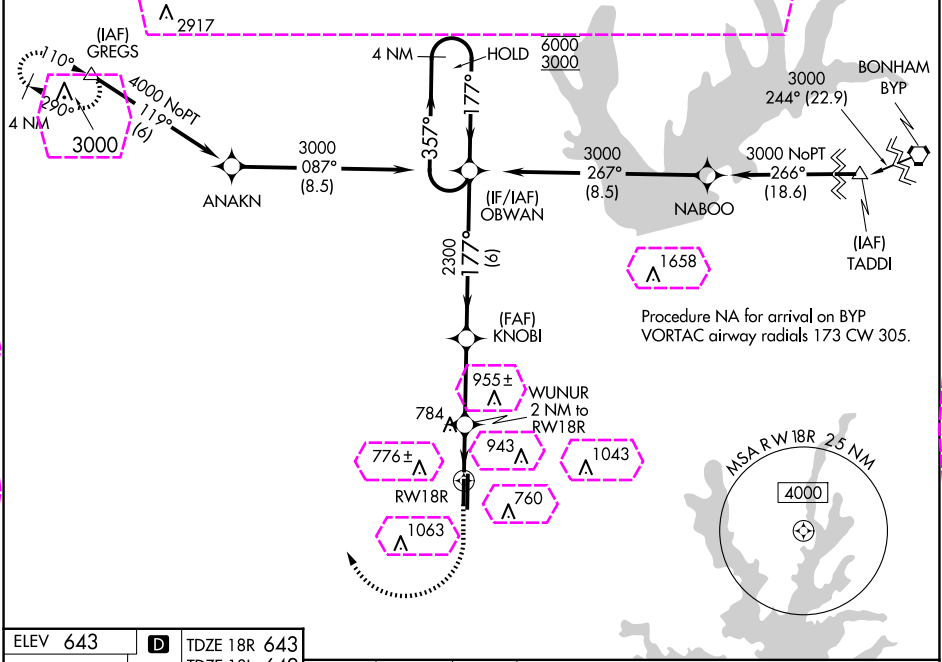
DENTON ENTERPRISE (D'TO)

RNP APCH.

For uncompensated Baro-VNAV systems, LNAV/VNAV NA below -9°C or above 54°C.

MISSED APPROACH: Climb to 1900 then climbing right turn to 4000 direct GREGS and hold.

ATIS 119.325	LONE STAR APP CON 118.1 306.95	DENTON TOWER* 119.95 (CTAF) 0	GND CON 123.95	CLNC DEL 123.95	UNICOM 122.95
------------------------	--	--	--------------------------	---------------------------	-------------------------



ELEV **643**

D TDZE 18R **643**
TDZE 18L **642**

MIRL Rwy 18L-36R and 18R-36L

1900 4000 GREGS

* LNAV only.

WUNUR 2 NM to RW18R

* 1.3 NM to RW18R

1320*

1.3 NM 0.7 3.1 NM 6 NM

OBWAN 4 NM Holding Pattern

357° 6000 3000

177° 2300

GP 3.00° TCH 42

CATEGORY	A	B	C	D
LPV DA		893-3/4	250 (300-3/4)	
LNAV/VNAV DA		926-7/8	283 (300-7/8)	
LNAV MDA	1100-1	457 (500-1)	1100-1 3/8	457 (500-1 3/8)
SIDESTEP 18L	1100-1 1/4	458 (500-1 1/4)	1100-1 3/4	458 (500-2 1/4)
	1100-1	1260-1	1380-2	1380-2 1/4
	457 (500-1)	617 (700-1)	737 (800-2)	737 (800-2 1/4)

CIRCLING

DENTON, TEXAS
Orig 31DEC20

33°12'N-97°12' W

DENTON ENTERPRISE (D'TO)
RNAV (GPS) RWY 18R

SC-2, 10 JUL 2025 to 07 AUG 2025

SC-2, 10 JUL 2025 to 07 AUG 2025

25219

WAAS CH 97643 W18B	APP CRS 177°	Rwy Ldg TDZE Apt Elev	18R 5003 643 643	18L 6502 642 643
--	------------------------	-----------------------------	--	--

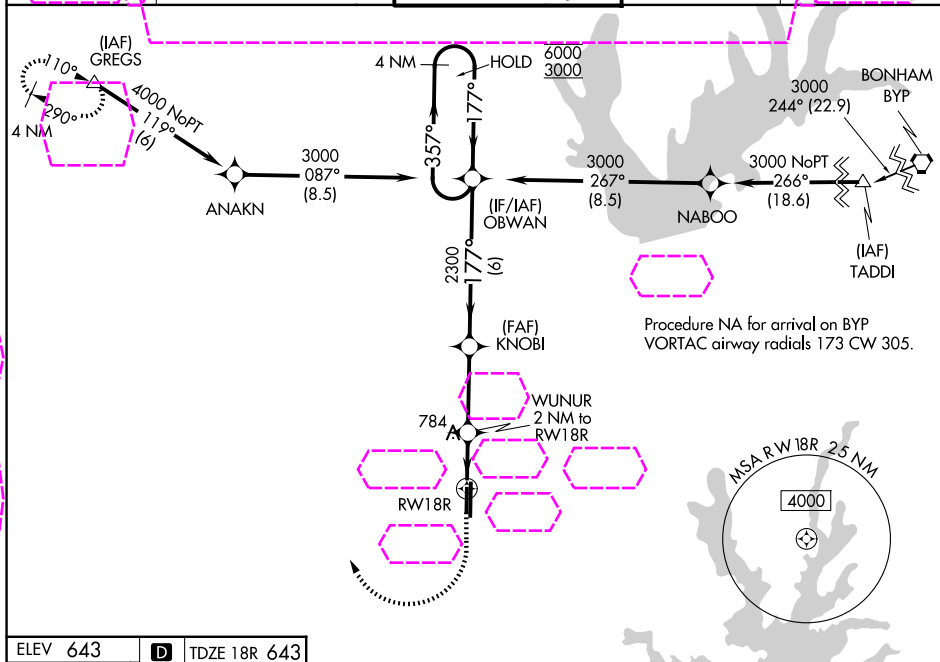
RNAV (GPS) RWY 18R

RNP APCH.

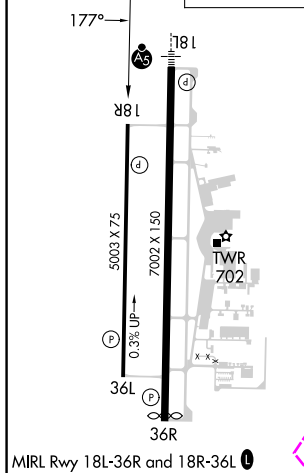
T For uncompensated Baro-VNAV systems, LNAV/VNAV NA below -9°C or above 54°C.

MISSED APPROACH: Climb to 1900 then climbing right turn to 4000 direct GREGS and hold.

ATIS 119.325	LONE STAR APP CON 118.1 306.95	DENTON TOWER ★ 119.95 (CTAF) 0	GND CON 123.95	CLNC DEL 123.95
------------------------	--	--	--------------------------	---------------------------



ELEV 643	D	TDZE 18R 643
		TDZE 18L 642



DENTON, TEXAS
Orig 31DEC20

33°12'N-97°12' W

DENTON ENTERPRISE (DT0)

RNAV (GPS) RWY 18R

Holding Pattern Data:

Category	A	B	C	D
LPV DA		893- $\frac{3}{4}$	250 (300- $\frac{3}{4}$)	
LNAV/VNAV DA		926- $\frac{7}{8}$	283 (300- $\frac{7}{8}$)	
LNAV MDA	1100-1	457 (500-1)	1100-1 $\frac{3}{8}$	457 (500-1 $\frac{3}{8}$)
SIDESTEP 18L	1100-1 $\frac{1}{4}$	458 (500-1 $\frac{1}{4}$)	1100-1 $\frac{3}{4}$ 458 (500-1 $\frac{3}{4}$)	1100-2 $\frac{1}{4}$ 458 (500-2 $\frac{1}{4}$)
CIRCLING	1100-1 457 (500-1)	1260-1 617 (700-1)	1380-2 737 (800-2)	1380-2 $\frac{1}{4}$ 737 (800-2 $\frac{1}{4}$)