

DENTON, TEXAS

AL-5866 (FAA)

24305

| | | | | |
|--|------------------------|-----------------------------|--|--|
| WAAS CH 82143 W18A | APP CRS 177° | Rwy Idg TDZE Apt Elev | 18L 6502 642 643 | 18R 5003 643 643 |
|--|------------------------|-----------------------------|--|--|

RNAV (GPS) RWY 18L

DENTON ENTERPRISE (D'TO)

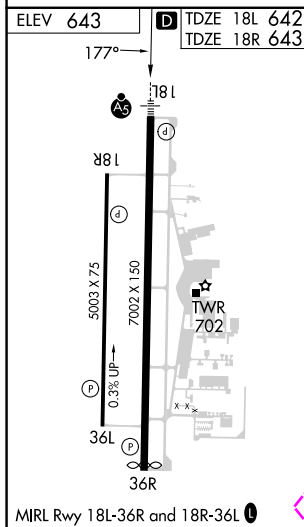
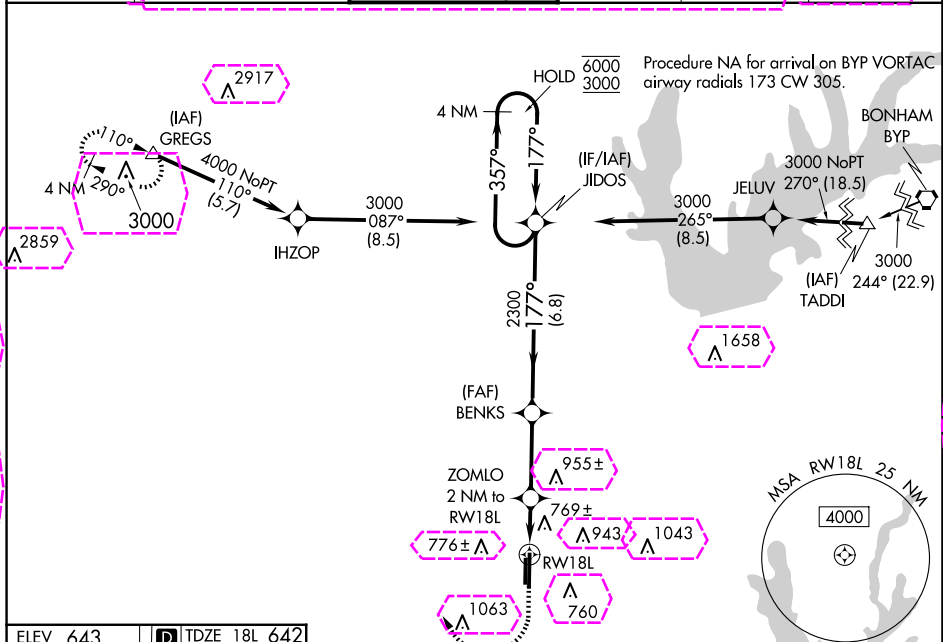
RNP APCH-GPS.

T For uncompensated Baro-VNAV systems, LNAV/VNAV NA below -9°C or above 54°C. For inop ALS, increase LNAV/VNAV all Cats visibility to 3/4 SM, and LNAV Cats C and D to 1 SM.



MISSED APPROACH: Climb to 1900 then climbing right turn to 4000 direct GREGS and hold.

| | | | | | |
|------------------------|--|---|--------------------------|---------------------------|-------------------------|
| ATIS 119.325 | LONE STAR APP CON 118.1 306.95 | DENTON TOWER ★ 119.95 (CTAF) 0 | GND CON 123.95 | CLNC DEL 123.95 | UNICOM 122.95 |
|------------------------|--|---|--------------------------|---------------------------|-------------------------|



1900
4000
GREGS
△

4 NM Holding Pattern

ZOMLO 2 NM to RW18L

BENKS 2300

JIDOS

1 NM to RW18L

1320

2300

357° → 6000
← 177° 3000

GP 3.00° TCH 50

1 NM 1 NM 3.1 NM 6.8 NM

| CATEGORY | A | B | C | D |
|-----------------|--------------------|----------------------|--------------------|----------------------|
| LPV DA | 842-½ | 200 (200-½) | | |
| LNAV/VNAV DA | 950-½ | 308 (400-½) | | |
| LNAV MDA | 1020-½ 378 (400-½) | 1020-¾ 378 (400-¾) | | |
| SIDESTEP 18R | 1100-1 457 (500-1) | 1100-1½ 457 (500-1½) | 1100-2 457 (500-2) | |
| CIRCLING | 1100-1 457 (500-1) | 1260-1 617 (700-1) | 1380-2 737 (800-2) | 1380-2¼ 737 (800-2¼) |

DENTON, TEXAS

Orig-A 22FEB24

33°12'N-97°12' W

DENTON ENTERPRISE (D'TO)

RNAV (GPS) RWY 18L

DENTON, TEXAS

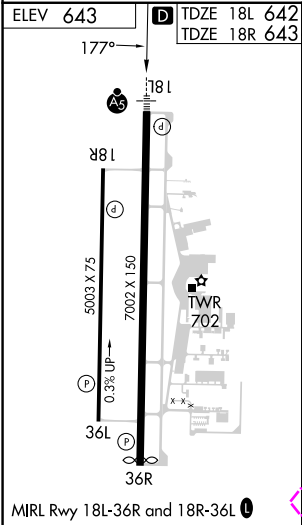
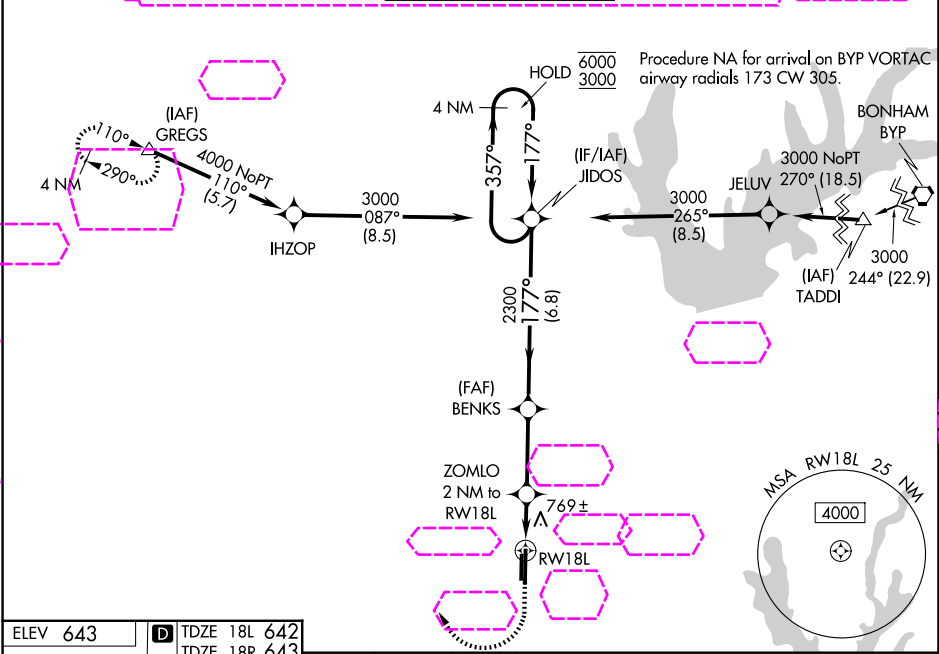
AL-5866 (FAA)

25219

| | | | | |
|--|------------------------|-----------------------------|--|--|
| WAAS CH 82143 W18A | APP CRS 177° | Rwy Ldg TDZE Apt Elev | 18L 6502 642 643 | 18R 5003 643 643 |
|--|------------------------|-----------------------------|--|--|

RNAV (GPS) RWY 18L
DENTON ENTERPRISE (D'TO)

| | | | | |
|---|--|--|--|---------------------------|
| RNP APCH-GPS. For uncompensated Baro-VNAV systems, LNAV/VNAV NA below -9°C or above 54°C. For inop ALS, increase LNAV/VNAV all Cats visibility to ½ SM, and LNAV Cats C and D to 1 SM. | | MALSR | MISSED APPROACH: Climb to 1900 then climbing right turn to 4000 direct GREGS and hold. | |
| ATIS 119.325 | LONE STAR APP CON 118.1 306.95 | DENTON TOWER ★ 119.95 (CTAF) 0 | GND CON 123.95 | CLNC DEL 123.95 |



1900

↑

4000

↷

GREGS

△

4 NM

Holding Pattern

JIDOS

357° → 6000

← 177° 3000

GP 3.00°

TCH 50

ZOMLO

2 NM to RW18L

1320

BENKS

2300

177°

2300

1 NM to RW18L

RW18L

1 NM

1 NM

3.1 NM

6.8 NM

| | | | | | |
|--------------|--------------------|--------------------|---------------------|----------------------|---|
| CATEGORY | A | | B | C | D |
| LPV DA | 842-½ | | 200 (200-½) | | |
| LNAV/VNAV DA | 950-½ | | 308 (400-½) | | |
| LNAV MDA | 1020-½ 378 (400-½) | | 1020-¾ 378 (400-¾) | | |
| SIDESTEP 18R | 1100-1 457 (500-1) | | 1100-1½ 457 (500-½) | 1100-2 457 (500-2) | |
| CIRCLING | 1100-1 457 (500-1) | 1260-1 617 (700-1) | 1380-2 737 (800-2) | 1380-2¼ 737 (800-2¼) | |

DENTON, TEXAS
Orig-A 22FEB24

33°12'N-97°12' W

DENTON ENTERPRISE (D'TO)
RNAV (GPS) RWY 18L

SC-2, 07 AUG 2025 to 04 SEP 2025

SC-2, 07 AUG 2025 to 04 SEP 2025