

DENTON, TEXAS

AL-5866 (FAA)

24305

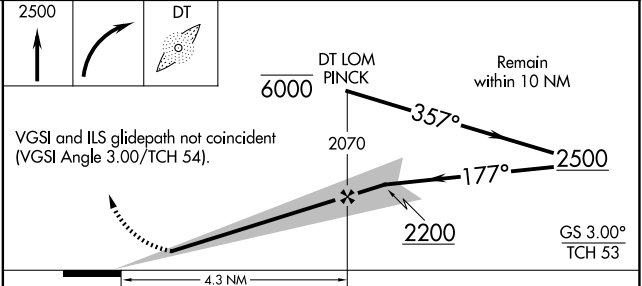
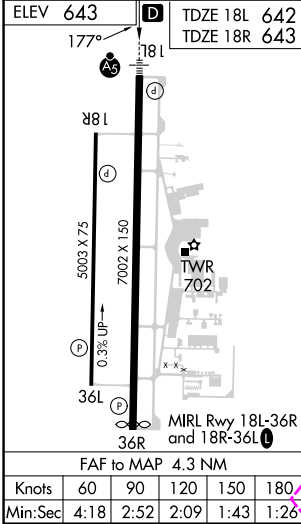
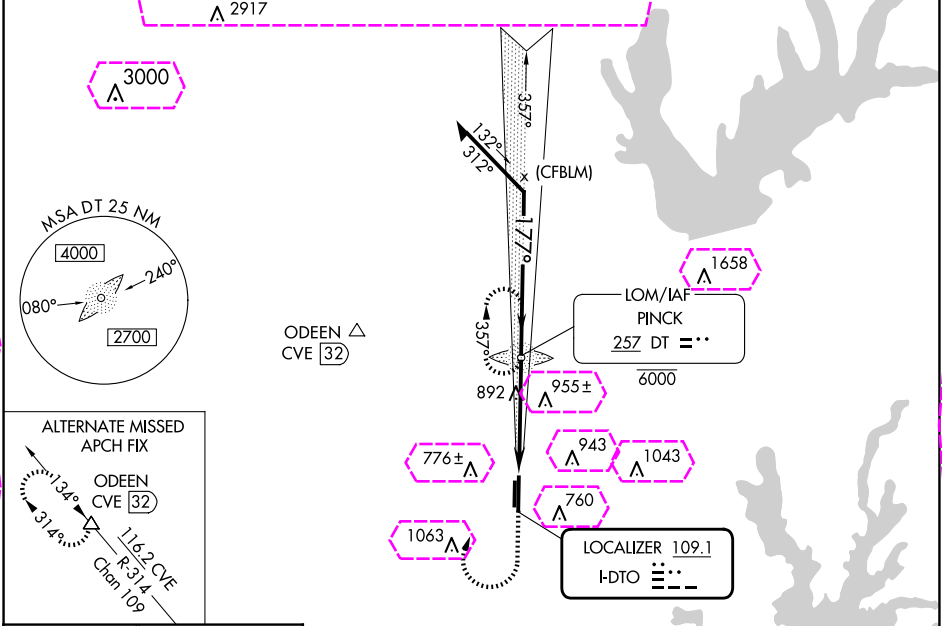
LOC I-DTO 109.1	APP CRS 177°	Rwy Idg 18L 18R TDZE 6502 5003 Apt Elev 643 643
---------------------------	------------------------	--

ILS or LOC RWY 18L
DENTON ENTERPRISE (D'TO)

ADF required. RADAR required for procedure entry.

MALSRL MISSED APPROACH: Climb to 2500 then right turn direct PINCK LOM and hold.

ATIS 119.325	LONE STAR APP CON 118.1 306.95	DENTON TOWER★ 119.95 (CTAF) 0	GND CON 123.95	CLNC DEL 123.95	UNICOM 122.95
------------------------	--	--	--------------------------	---------------------------	-------------------------



CATEGORY	A	B	C	D
S-ILS 18L	842-1/2		200 (200-1/2)	
S-LOC 18L	1160-1/2	518 (600-1/2)	1160-1	518 (600-1)
SIDESTEP 18R	1260-1	617 (700-1)	1260-1 3/4 617 (700-1 3/4)	1260-2 617 (700-2)
CIRCLING	1260-1	617 (700-1)	1380-2 737 (800-2)	1380-2 1/4 737 (800-2 1/4)

DENTON, TEXAS
Orig 31DEC20

33°12'N-97°12'W

DENTON ENTERPRISE (D'TO)
ILS or LOC RWY 18L

SC-2, 10 JUL 2025 to 07 AUG 2025

SC-2, 10 JUL 2025 to 07 AUG 2025

DENTON, TEXAS

AL-5866 (FAA)

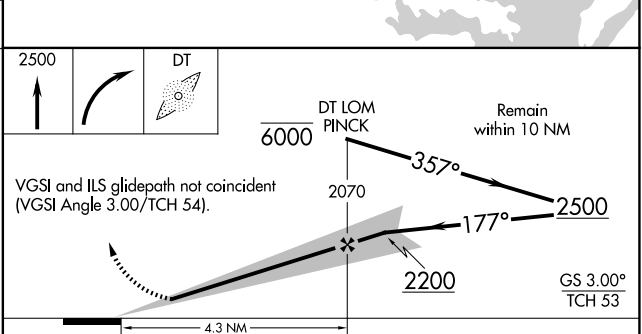
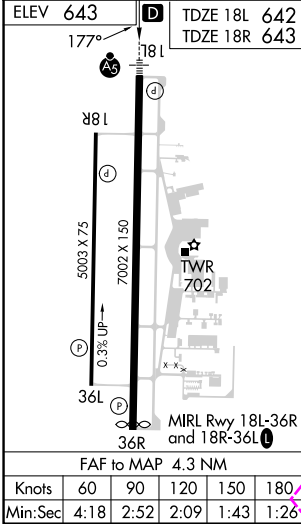
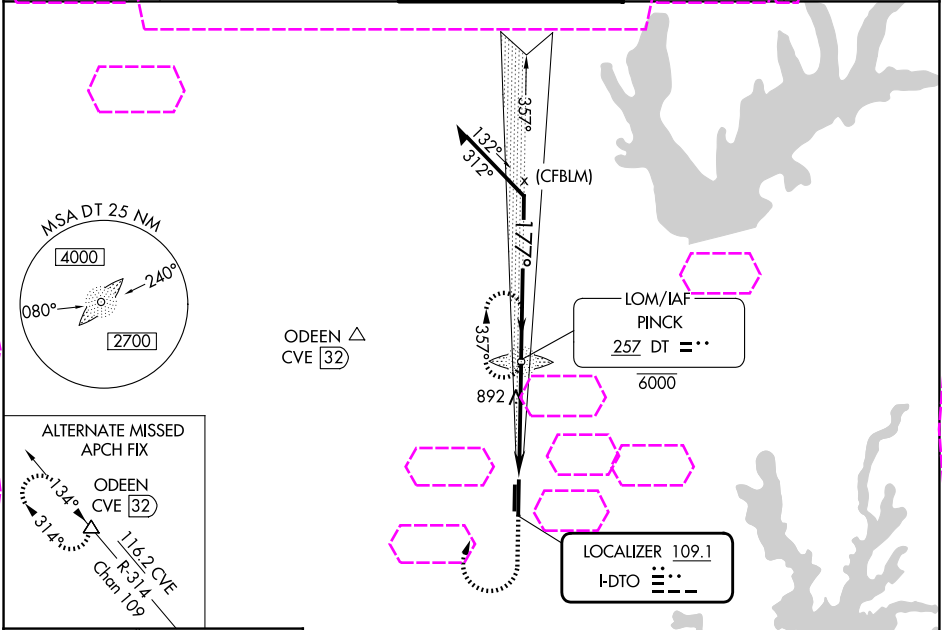
25219

LOC I-DTO 109.1	APP CRS 177°	Rwy Ldg	18L	18R
		TDZE	6502	5003
		Apt Elev	643	643

ILS or LOC RWY 18L
DENTON ENTERPRISE (D'TO)

ADF required. RADAR required for procedure entry.		MALSR AG	MISSED APPROACH: Climb to 2500 then right turn direct PINCK LOM and hold.	
NA	For inop ALS, increase S-ILS 18L all Cts visibility to ½ SM. For inop ALS, increase S-LOC 18L Cat C/D to 1½ SM.			

ATIS 119.325	LONE STAR APP CON 118.1 306.95	DENTON TOWER ★ 119.95 (CTAF) 0	GND CON 123.95	CLNC DEL 123.95
------------------------	--	--	--------------------------	---------------------------



CATEGORY	A	B	C	D
S-ILS 18L	842-½		200 (200-½)	
S-LOC 18L	1160-½	518 (600-½)	1160-1	518 (600-1)
SIDESTEP 18R	1260-1	617 (700-1)	1260-1¾ 617 (700-1¾)	1260-2 617 (700-2)
CIRCLING	1260-1	617 (700-1)	1380-2 737 (800-2)	1380-2¼ 737 (800-2¼)

DENTON, TEXAS
Orig 31DEC20

33°12'N-97°12'W

DENTON ENTERPRISE (D'TO)
ILS or LOC RWY 18L

SC-2, 07 AUG 2025 to 04 SEP 2025

SC-2, 07 AUG 2025 to 04 SEP 2025