

MARLIN, TEXAS

AL-5854 (FAA)

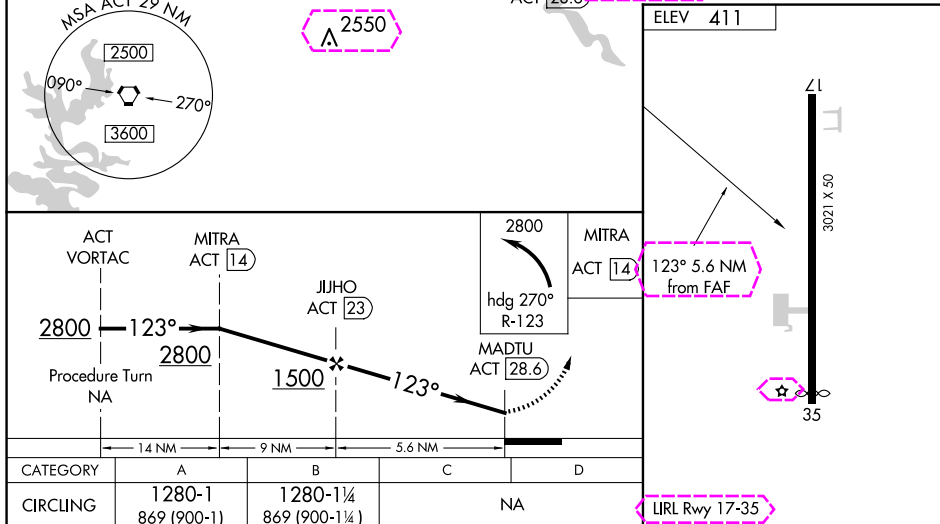
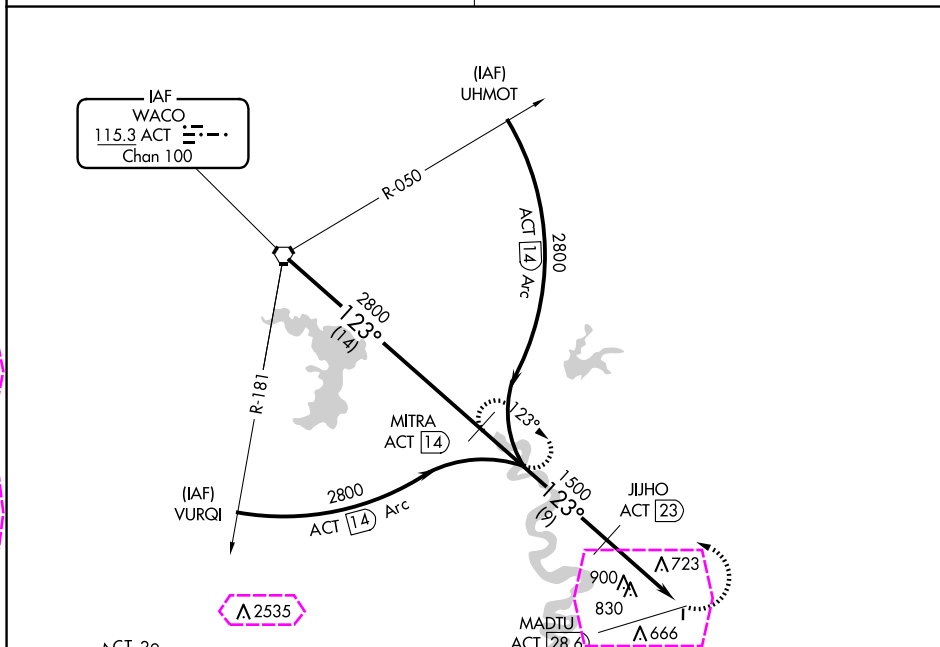
19115

VOR ACT 115.3 Chan 100	APP CRS 123°	Rwy Idg N/A TDZE N/A Apt Elev 411
--	------------------------	---

VOR/DME or GPS-A

MARLIN (T15)

<p>▼ Use Waco Rgnl altimeter setting.</p> <p>▲ NA</p>	<p>MISSED APPROACH: Climbing left turn to 2800 via heading 270° and R-123 to MITRA/14 DME and hold.</p>
<p>WACO APP CON ★</p> <p>127.65 352.0</p>	<p>CTAF</p> <p>122.9</p>



MARLIN, TEXAS
Amdt 7 18MAY00

31°20'N-96°51'W

MARLIN (T15)

VOR/DME or GPS-A

SC-5, 10 JUL 2025 to 07 AUG 2025

SC-5, 10 JUL 2025 to 07 AUG 2025

MARLIN, TEXAS

AL-5854 (FAA)

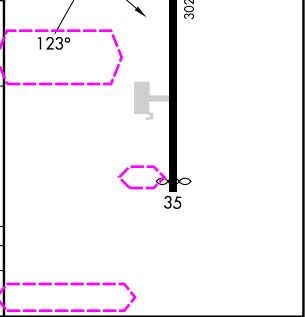
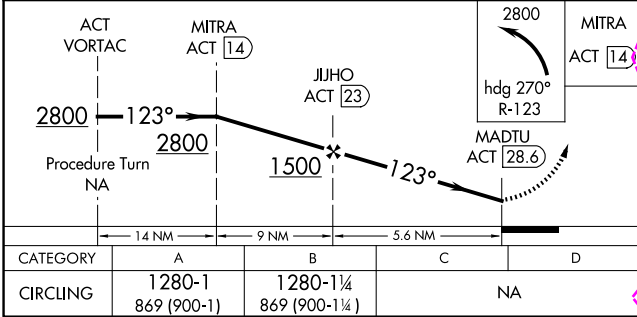
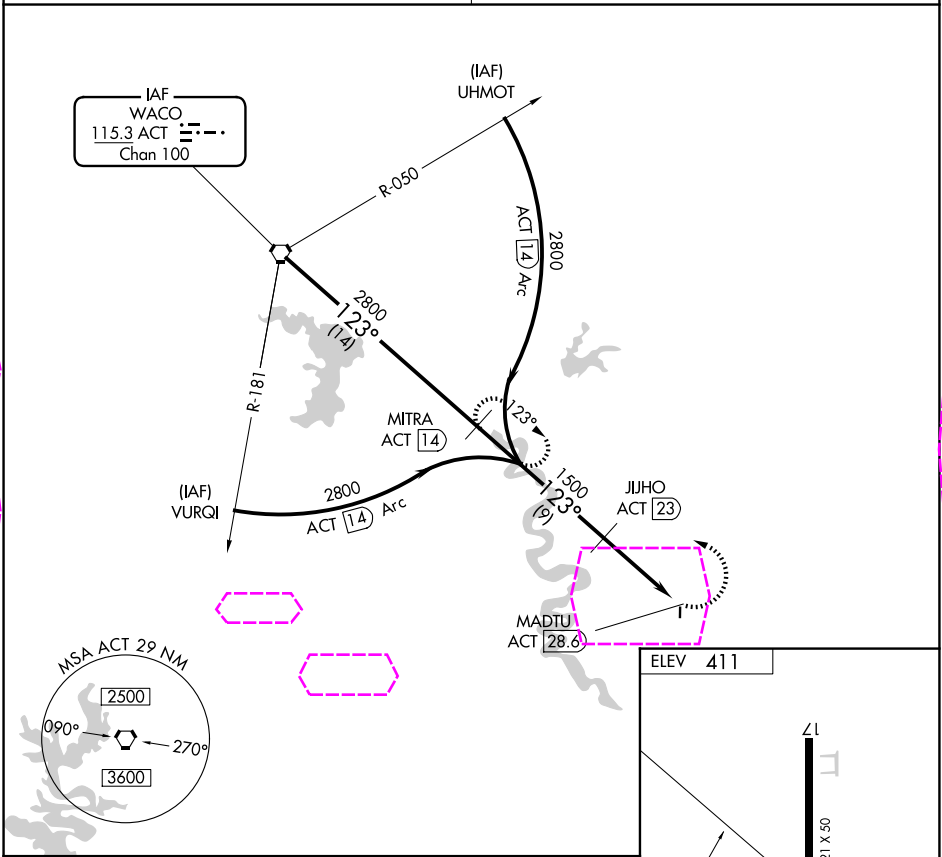
25219

VOR ACT 115.3 Chan 100	APP CRS 123°	Rwy Ldg N/A TDZE N/A Apt Elev 411
--	------------------------	---

VOR/DME or GPS-A
MARLIN (T15)

NA Use Waco Rgnl altimeter setting.	MISSED APPROACH: Climbing left turn to 2800 via heading 270° and R-123 to MITRA/14 DME and hold.
-------------------------------------	--

WACO APP CON ★ 127.65 352.0	CTAF 122.9
---------------------------------------	----------------------



MARLIN, TEXAS Amdt 7 18MAY00	31°20'N-96°51'W	MARLIN (T15) VOR/DME or GPS-A
---------------------------------	-----------------	----------------------------------

SC-5, 07 AUG 2025 to 04 SEP 2025

SC-5, 07 AUG 2025 to 04 SEP 2025