

BARNWELL, SOUTH CAROLINA

AL-5808 (FAA)

25051

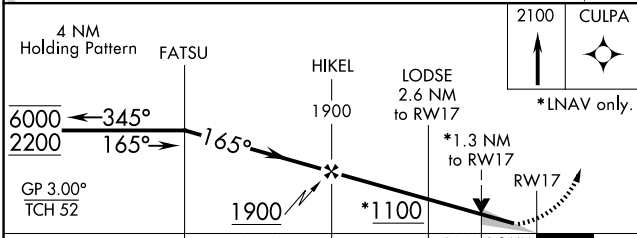
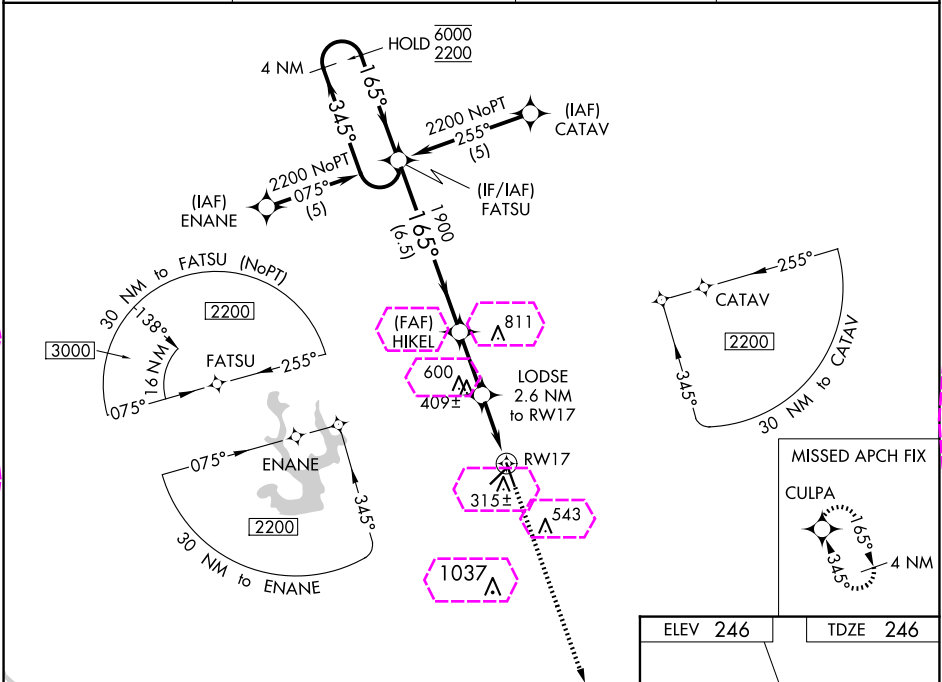
WAAS CH 90418 W17A	APP CRS 165°	Rwy Idg 5119 TDZE 246 Apt Elev 246
--	------------------------	---

RNAV (GPS) RWY 17

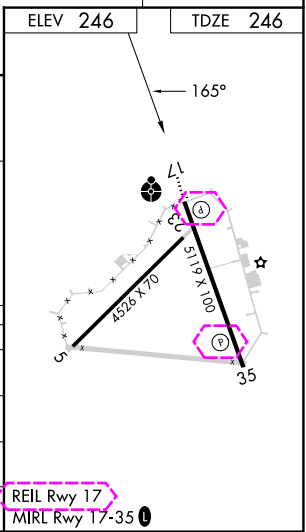
BARNWELL RGNL (BNL)

RNP APCH.	ODALS	MISSED APPROACH: Climb to 2100 direct CULPA and hold.
-----------	-------	---

AWOS-3PT 119.775	JACKSONVILLE CENTER 132.925 363.2	GCO 121.725	UNICOM 122.8 (CTAF)
----------------------------	---	-----------------------	-------------------------------



CATEGORY	A	B	C	D
LPV DA		496-3/4	250 (300-3/4)	
LNAV/VNAV DA		604-1 1/4	358 (400-1 1/4)	
LNAV MDA	700-3/4	454 (500-3/4)	700-1 1/4 454 (500-1 1/4)	700-1 1/2 454 (500-1 1/2)
CIRCLING	700-1	454 (500-1)	900-1 1/4 654 (700-1 1/4)	900-2 654 (700-2)



BARNWELL, SOUTH CAROLINA

AL-5808 (FAA)

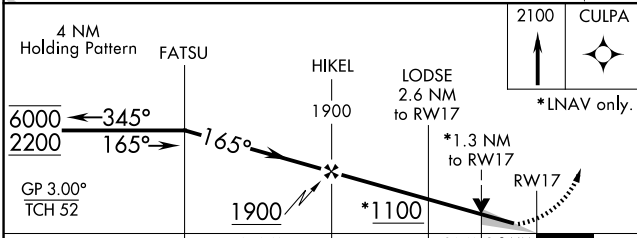
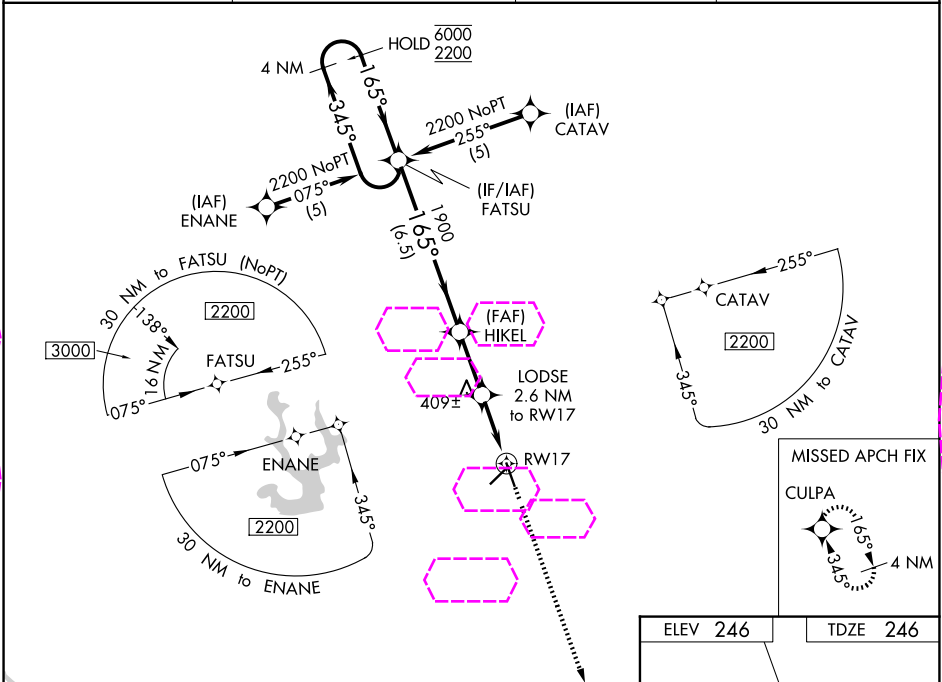
25219

WAAS CH 90418 W17A	APP CRS 165°	Rwy Ldg 5119 TDZE 246 Apt Elev 246
--	------------------------	---

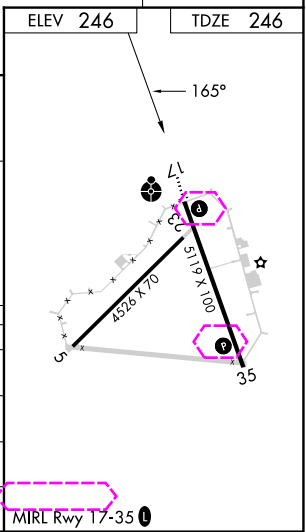
RNAV (GPS) RWY 17
BARNWELL RGNL (BNL)

RNP APCH.	ODALS	MISSED APPROACH: Climb to 2100 direct CULPA and hold.
Circling Rwy 5, 23 NA at night. Inop table does not apply to LPV, LNAV/VNAV all Cats, and LNAV Cat C. For uncompensated Baro-VNAV systems, LNAV/VNAV NA below -15°C or above 54°C.		

AWOS-3PT 119.775	JACKSONVILLE CENTER 132.925 363.2	GCO 121.725	UNICOM 122.8 (CTAF) 1
----------------------------	---	-----------------------	--



CATEGORY	A	B	C	D
LPV DA	496-3/4 250 (300-3/4)			
LNAV/VNAV DA	604-1 358 (400-1 1/4)			
LNAV MDA	700-3/4 454 (500-3/4)	700-1 454 (500-1 1/4)	700-1 1/2 454 (500-1 1/2)	
CIRCLING	700-1 454 (500-1)	900-1 654 (700-1 1/4)	900-2 654 (700-2)	



BARNWELL, SOUTH CAROLINA
Amdt 2B 30DEC21

33°15'N-81°23'W

BARNWELL RGNL (BNL)
RNAV (GPS) RWY 17

SE-2, 07 AUG 2025 to 04 SEP 2025

SE-2, 07 AUG 2025 to 04 SEP 2025