

ST. CLOUD, MINNESOTA

AL-5799 (FAA)

23222

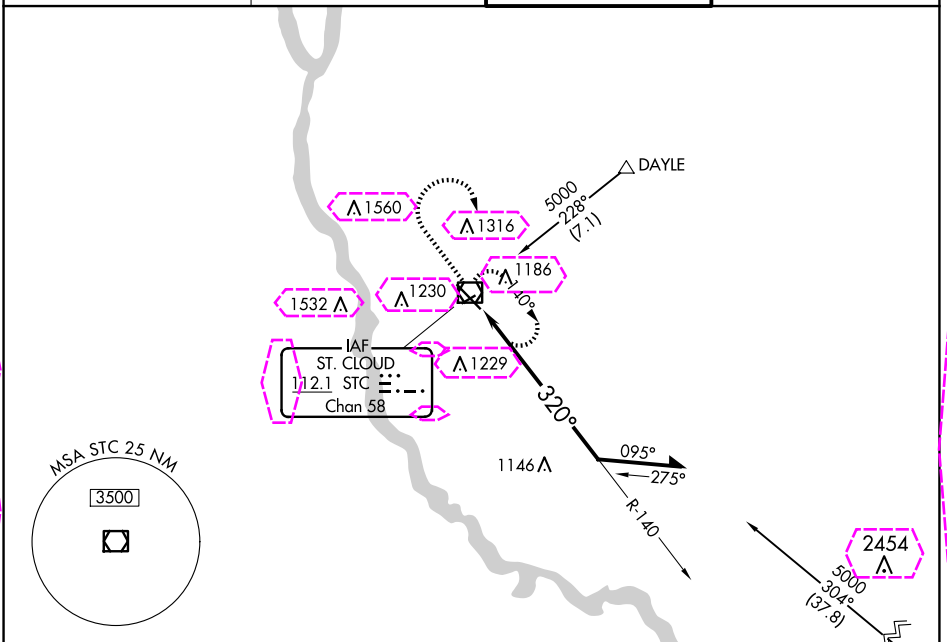
VOR/DME STC 112.1 Chan 58	APP CRS 320°	Rwy Idg TDZE 1020 Apt Elev 1031
---	------------------------	---

VOR RWY 31

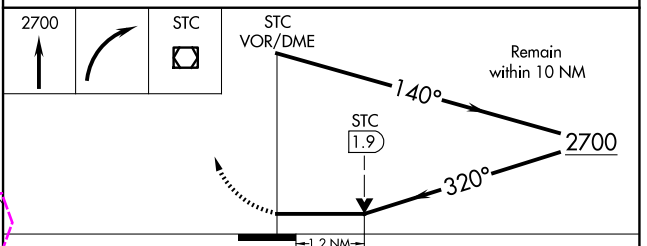
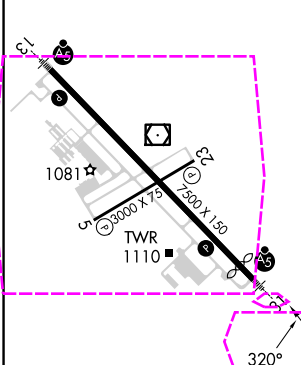
ST CLOUD RGNL (STC)

⚠ For inop ALS, increase S-31 Cat C and D visibility to 1½ SM.	MALSR 	MISSED APPROACH: Climb to 2700 then right turn direct STC VOR/DME and hold.
---	---	--

ATIS 119.375	MINNEAPOLIS CENTER 121.05 235.775	ST. CLOUD TOWER ★ 118.25 (CTAF) 0	GND CON 123.75
-------------------------------	--	--	---------------------------------



ELEV 1031	D	TDZE 1020
-----------	----------	-----------



CATEGORY	A	B	C	D
S-31	1460-1½	440 (500-1½)	1460-¾ 440 (500-¾)	1460-1 440 (500-1)
CIRCLING	1500-1	469 (500-1)	1620-1½ 589 (600-1½)	1860-2¾ 829 (900-2¾)

ST. CLOUD, MINNESOTA
Orig-D 10AUG23

45°33'N-94°04'W

ST CLOUD RGNL (STC)
VOR RWY 31

NC-1, 10 JUL 2025 to 07 AUG 2025

NC-1, 10 JUL 2025 to 07 AUG 2025

ST. CLOUD, MINNESOTA

AL-5799 (FAA)

25219

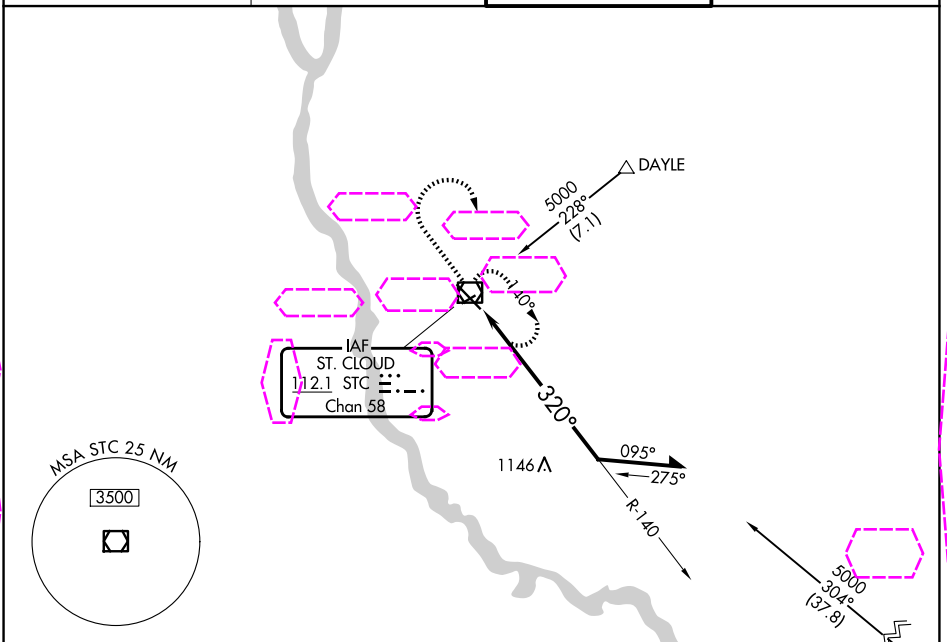
VOR/DME STC 112.1 Chan 58	APP CRS 320°	Rwy Ldg TDZE Apt Elev 7000 1020 1031
---	------------------------	--

VOR RWY 31

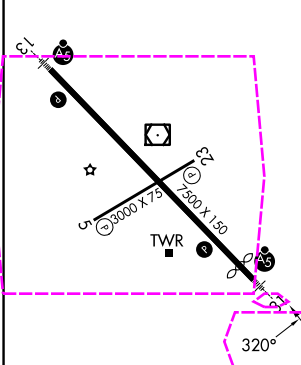
ST CLOUD RGNL (STC)

⚠ For inop ALS, increase S-31 Cat C and D visibility to 1½ SM.	MALSR 	MISSED APPROACH: Climb to 2700 then right turn direct STC VOR/DME and hold.
---	---	--

ATIS 119.375	MINNEAPOLIS CENTER 121.05 235.775	ST. CLOUD TOWER ★ 118.25 (CTAF) 0	GND CON 123.75
-------------------------------	--	--	---------------------------------



ELEV 1031	D	TDZE 1020
-----------	----------	-----------



MIRL Rwy 5-23 0	HIRL Rwy 13-31 0
-----------------	------------------

117.3 GEP

Chan 120

Procedure NA for arrival on GEP VORTAC
airway radials 260 CW 352.

2700

STC

STC
VOR/DME

Remain
within 10 NM

STC

1.9

320°

2700

1.2 NM

CATEGORY

A

B

C

D

S-31

1460-½ 440 (500-½)

1460-¾
440 (500-¾)

1460-1
440 (500-1)

CIRCLING

1500-1 469 (500-1)

1620-1½
589 (600-1½)

1860-2¾
829 (900-2¾)

ST. CLOUD, MINNESOTA
Orig-D 10AUG23

45°33'N-94°04'W

ST CLOUD RGNL (STC)
VOR RWY 31