

ST. CLOUD, MINNESOTA

AL-5799 (FAA)

24081

APP CRS	Rwy Idg	3000
056°	TDZE	1022
	Apt Elev	1031

RNAV (GPS) RWY 5

ST CLOUD RGNL (STC)

RNP APCH - GPS.

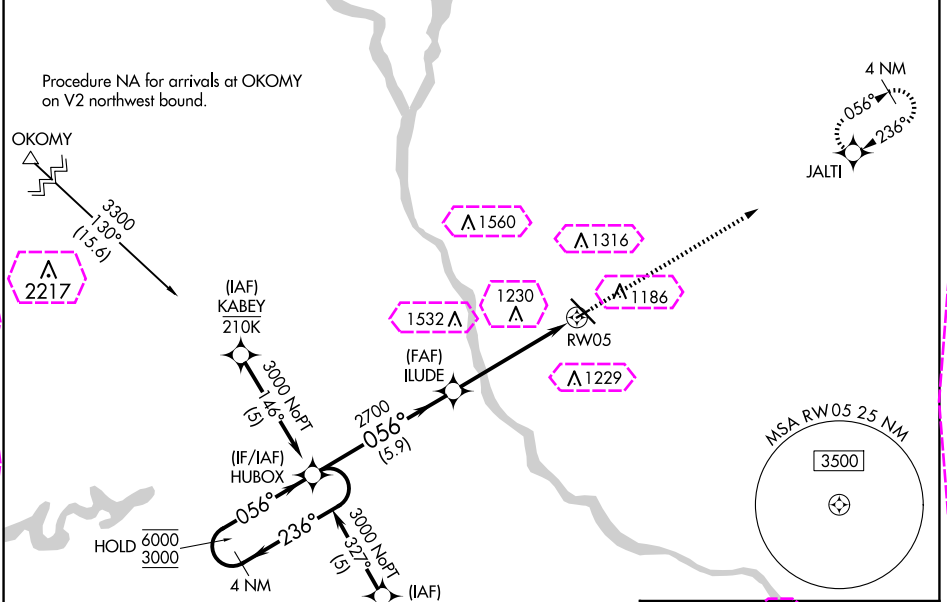
▼

⚠

Rwy 5 helicopter visibility reduction below $\frac{3}{4}$ SM NA. When local altimeter setting not received, use Little Falls altimeter setting, increase all MDAs 80 feet and LNAV visibility Cat C $\frac{1}{4}$ SM. VDP NA when using Little Falls altimeter setting.

MISSED APPROACH: Climb to 3000 direct JALTI and hold.

ATIS 119.375	MINNEAPOLIS CENTER 121.05 235.775	ST. CLOUD TOWER ★ 118.25 (CTAF) 0	GND CON 123.75
-----------------	--------------------------------------	--------------------------------------	-------------------



ELEV 1031 TDZE 1022

VGSI and descent angles not coincident (VGSI Angle 3.00/TCH 31).

4 NM Holding Pattern

HUBOX

6000 3000

236° 056°

ILUDE

2700

3.00° TCH 40

1.4 NM to RW05

RW05

5.9 NM 3.8 NM 1.4 NM

3000 JALTI

CATEGORY	A	B	C	D
LNAV MDA	1500-1	478 (500-1)	1500-1 $\frac{3}{8}$ 478 (500-1 $\frac{3}{8}$)	NA
CIRCLING	1500-1	469 (500-1)	1620-1 $\frac{1}{2}$ 589 (600-1 $\frac{1}{2}$)	NA

MIRL Rwy 5-23 0

HIRL Rwy 13-31 0

ST. CLOUD, MINNESOTA

AL-5799 (FAA)

25219

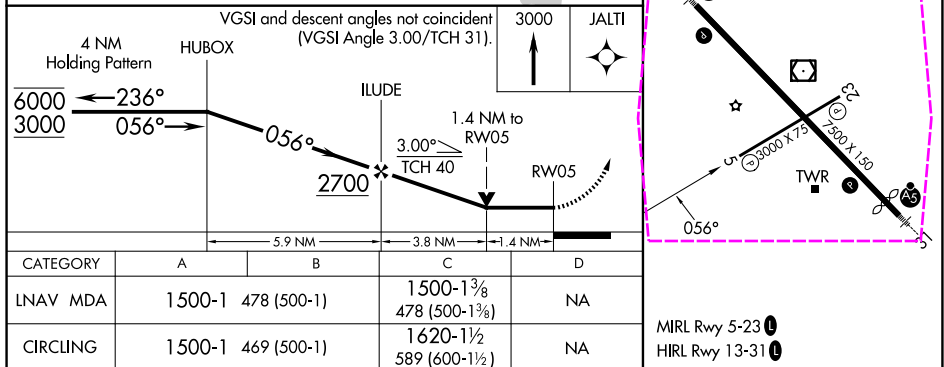
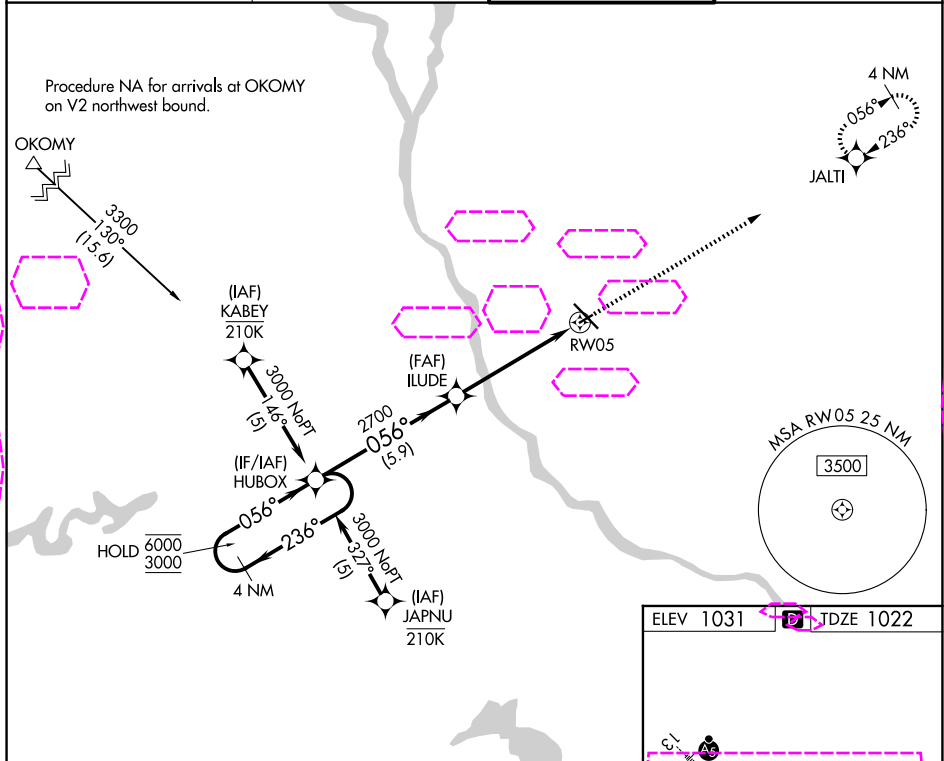
APP CRS	Rwy Ldg	3000
056°	TDZE	1022
	Apt Elev	1031

RNAV (GPS) RWY 5

ST CLOUD RGNL (STC)

RNP APCH - GPS.	MISSED APPROACH: Climb to 3000 direct JALTI and hold.
<p>▼ Rwy 5 helicopter visibility reduction below ¾ SM NA. When local altimeter setting not received, use Little Falls altimeter setting, increase all MDAs 80 feet and LNAV visibility Cat C ¼ SM. VDP NA when using Little Falls altimeter setting.</p>	

ATIS 119.375	MINNEAPOLIS CENTER 121.05 235.775	ST. CLOUD TOWER ★ 118.25 (CTAF) 0	GND CON 123.75
-----------------	--------------------------------------	--------------------------------------	-------------------



ST. CLOUD, MINNESOTA

Amtd 1 21MAR24

45°33'N-94°04'W

RNAV (GPS) RWY 5

ST CLOUD RGNL (STC)