

ST. CLOUD, MINNESOTA

AL-5799 (FAA)

24081

WAAS CH 61213 W31A	APP CRS 313°	Rwy Idg TDZE 1020 Apt Elev 1031
--	------------------------	---

RNAV (GPS) RWY 31

ST CLOUD RGNL (STC)

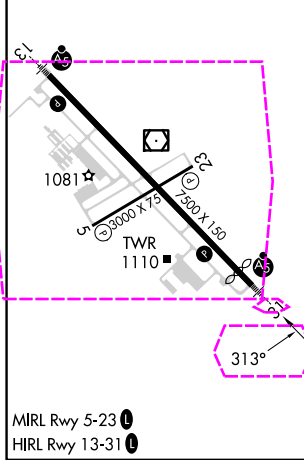
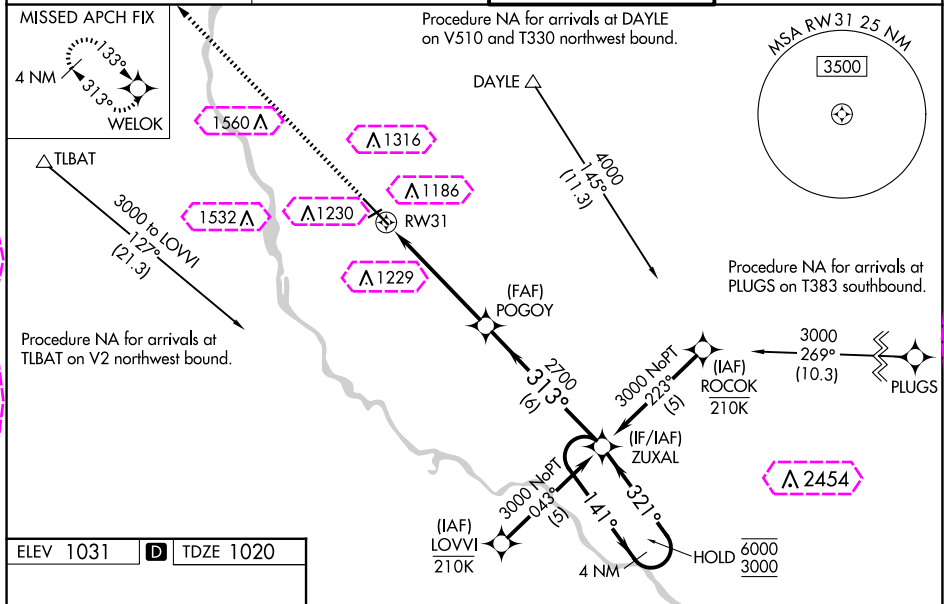
RNP APCH - GPS.

Baro-VNAV and VDP NA when using Little Falls altimeter setting. For uncompensated Baro-VNAV systems, LNAV/VNAV NA below -21°C or above 54°C. For inop ALS when using Little Falls altimeter setting, increase LPV all Cats visibility to ¾ SM and LNAV/VNAV all Cats visibility to 1 ¾ SM and LNAV Cats C and D visibility to 1 ¾ SM. When local altimeter setting not received, use Little Falls altimeter setting, increase LPV DA to 1296 feet, increase LNAV/VNAV DA to 1503 feet and all visibilities ¼ SM; increase all MDAs 80 feet and LNAV visibility Cat C and D ¼ SM, and Circling visibility Cat C and D ¼ SM. For inop ALS, increase LNAV/VNAV visibility all Cats to 1 ¾ SM.

MALS R

MISSED APPROACH: Climb to 3000 direct WELOK and hold.

ATIS 119.375	MINNEAPOLIS CENTER 121.05 235.775	ST. CLOUD TOWER ★ 118.25 (CTAF) 0	GND CON 123.75
------------------------	---	---	--------------------------



3000

↑

WELOK

✦

POGOY

2700

1.2 NM to RW31

RW31

1.2

3.9 NM

6 NM

ZUXAL

4 NM Holding Pattern

141° → 6000

← 321° 3000

313°

2700

GP 3.00°

TCH 50

CATEGORY	A	B	C	D
LPV DA	1220-½ 200 (200-½)			
LNAV/VNAV DA	1427-¾ 407 (400-¾)			
LNAV MDA	1460-½ 440 (500-½)	1460-¾ 440 (500-¾)		
CIRCLING	1500-1 469 (500-1)	1620-1½ 589 (600-1½)	1860-2¾ 829 (900-2¾)	

ST. CLOUD, MINNESOTA
Amdt 2 21MAR24

45°33'N-94°04'W

ST CLOUD RGNL (STC)

RNAV (GPS) RWY 31

ST. CLOUD, MINNESOTA

AL-5799 (FAA)

25219

WAAS CH 61213 W31A	APP CRS 313°	Rwy Ldg TDZE 1020 Apt Elev 1031
--	------------------------	---

RNAV (GPS) RWY 31

ST CLOUD RGNL (STC)

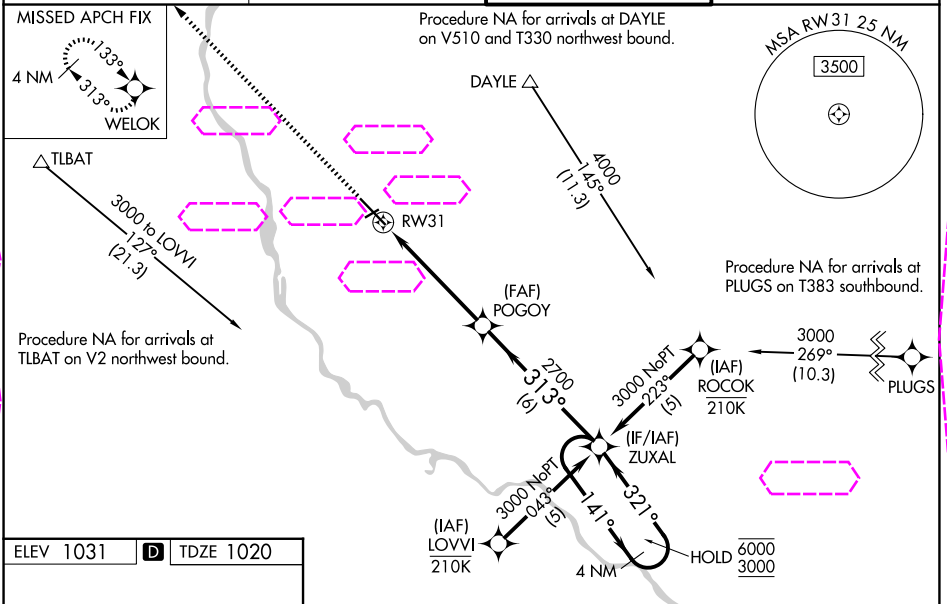
RNP APCH - GPS.

⚠ Baro-VNAV and VDP NA when using Little Falls altimeter setting. For uncompensated Baro-VNAV systems, LNAV/VNAV NA below -21°C or above 54°C. For inop ALS when using Little Falls altimeter setting, increase LPV all Cats visibility to ¾ SM and LNAV/VNAV all Cats visibility to 1 ¾ SM and LNAV Cats C and D visibility to 1 ¾ SM. When local altimeter setting not received, use Little Falls altimeter setting, increase LPV DA to 1296 feet, increase LNAV/VNAV DA to 1503 feet and all visibilities ¼ SM; increase all MDAs 80 feet and LNAV visibility Cat C and D ¼ SM, and Circling visibility Cat C and D ¼ SM. For inop ALS, increase LNAV/VNAV visibility all Cats to 1 ¾ SM.

MALS R

MISSED APPROACH: Climb to 3000 direct WELOK and hold.

ATIS 119.375	MINNEAPOLIS CENTER 121.05 235.775	ST. CLOUD TOWER ★ 118.25 (CTAF) 0	GND CON 123.75
------------------------	---	---	--------------------------



3000 WELOK

313°

1.2 NM to RW31

RW31

POGOY 2700

ZUXAL

4 NM Holding Pattern

141° → 6000

← 321° 3000

GP 3.00° TCH 50

CATEGORY	A	B	C	D
LPV DA	1220-½ 200 (200-½)			
LNAV/VNAV DA	1427-¾ 407 (400-¾)			
LNAV MDA	1460-½ 440 (500-½)		1460-¾ 440 (500-¾)	
CIRCLING	1500-1 469 (500-1)		1620-1½ 589 (600-1½) 1860-2¾ 829 (900-2¾)	

MIRL Rwy 5-23 0

HIRL Rwy 13-31 0

ST. CLOUD, MINNESOTA

Amdt 2 21MAR24

45°33'N-94°04'W

ST CLOUD RGNL (STC)

RNAV (GPS) RWY 31

NC-1, 07 AUG 2025 to 04 SEP 2025

NC-1, 07 AUG 2025 to 04 SEP 2025