

ST. CLOUD, MINNESOTA

AL-5799 (FAA)

22307

APP CRS	Rwy Idg	3000
236°	TDZE	1022
	Apt Elev	1031

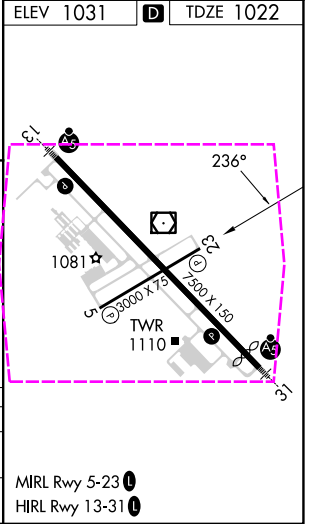
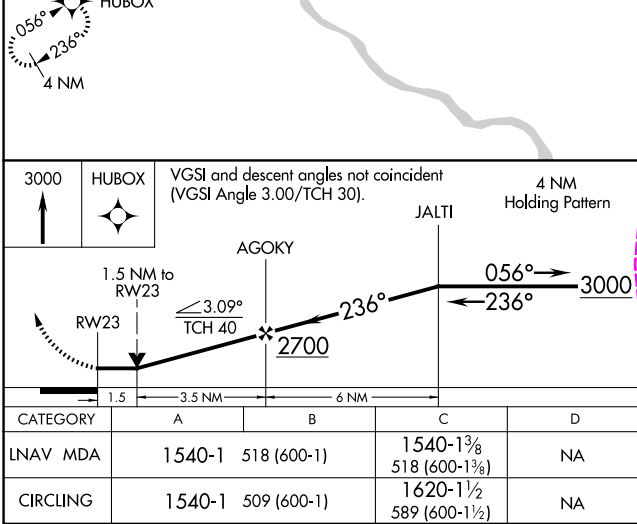
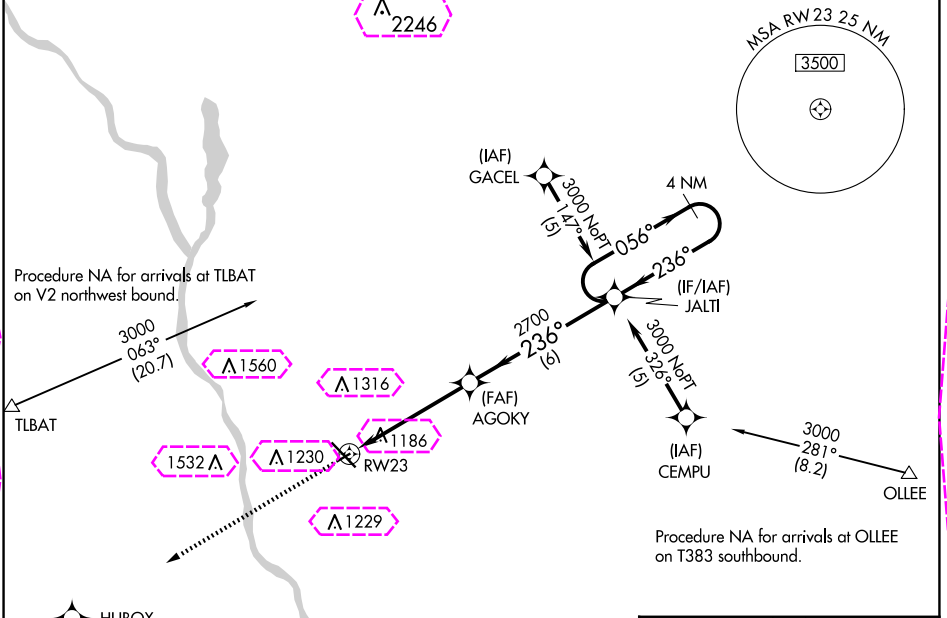
RNAV (GPS) RWY 23

ST CLOUD RGNL (STC)

⚠ Rwy 23 helicopter visibility reduction below $\frac{3}{4}$ SM NA. DME/DME RNP-0.3 NA. VDP NA when using Little Falls altimeter setting. When local altimeter setting not received, use Little Falls altimeter setting and increase all MDA 80 feet and increase LNAV Cat C visibility $\frac{3}{8}$ SM and Circling Cat C visibility $\frac{1}{4}$ SM.

MISSED APPROACH: Climb to 3000 direct HUBOX and hold.

ATIS 119.375	MINNEAPOLIS CENTER 121.05 235.775	ST. CLOUD TOWER ★ 118.25 (CTAF) 0	GND CON 123.75
------------------------	---	---	--------------------------



ST. CLOUD, MINNESOTA
Orig-C 02DEC21

45°33'N-94°04'W

ST CLOUD RGNL (STC)
RNAV (GPS) RWY 23

ST. CLOUD, MINNESOTA

AL-5799 (FAA)

25219

APP CRS	Rwy Ldg	3000
236°	TDZE	1022
	Apt Elev	1031

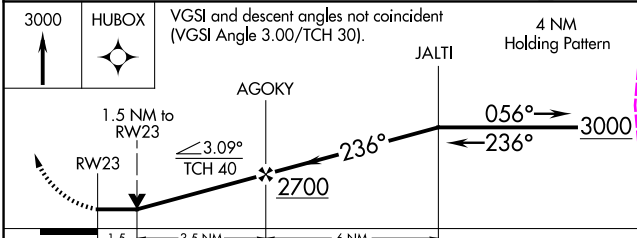
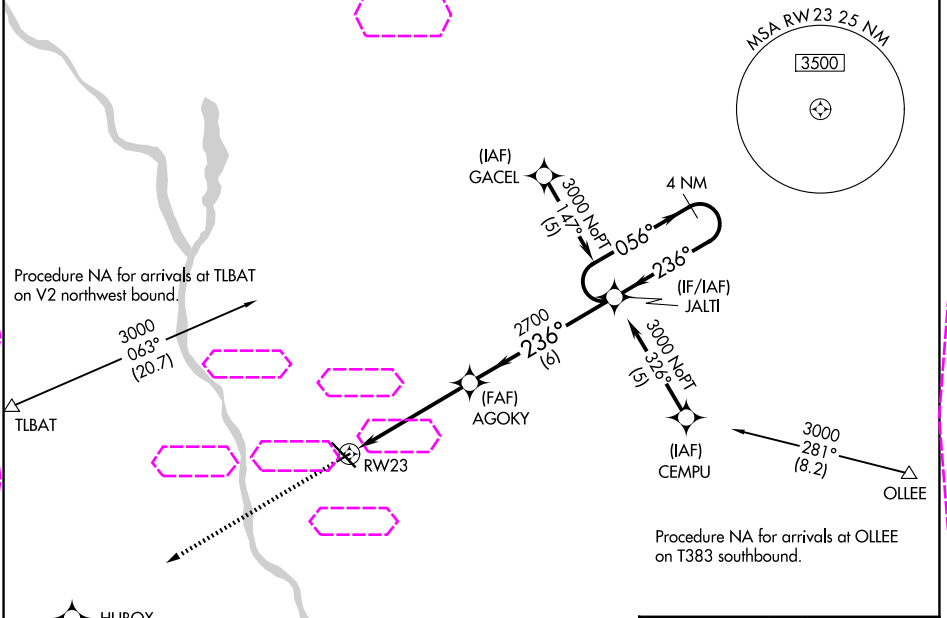
RNAV (GPS) RWY 23

ST CLOUD RGNL (STC)

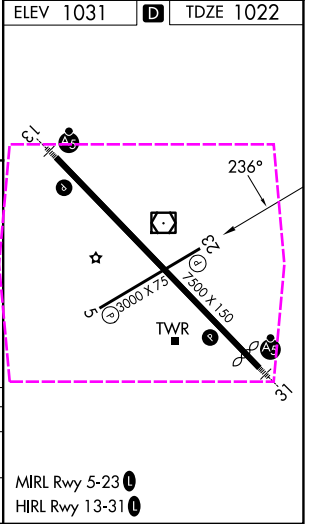
⚠ Rwy 23 helicopter visibility reduction below $\frac{3}{4}$ SM NA. DME/DME RNP-0.3 NA. VDP NA when using Little Falls altimeter setting. When local altimeter setting not received, use Little Falls altimeter setting and increase all MDA 80 feet and increase LNAV Cat C visibility $\frac{3}{8}$ SM and Circling Cat C visibility $\frac{1}{4}$ SM.

MISSED APPROACH: Climb to 3000 direct HUBOX and hold.

ATIS 119.375	MINNEAPOLIS CENTER 121.05 235.775	ST. CLOUD TOWER ★ 118.25 (CTAF) 0	GND CON 123.75
-----------------	--------------------------------------	--------------------------------------	-------------------



CATEGORY	A	B	C	D
LNAV MDA	1540-1	518 (600-1)	1540-1 $\frac{3}{8}$ 518 (600-1 $\frac{3}{8}$)	NA
CIRCLING	1540-1	509 (600-1)	1620-1 $\frac{1}{2}$ 589 (600-1 $\frac{1}{2}$)	NA



ST. CLOUD, MINNESOTA
Orig-C 02DEC21

45°33'N-94°04'W

ST CLOUD RGNL (STC)
RNAV (GPS) RWY 23

NC-1, 07 AUG 2025 to 04 SEP 2025

NC-1, 07 AUG 2025 to 04 SEP 2025