

ST. CLOUD, MINNESOTA

AL-5799 (FAA)

24333

WAAS CH 82013 W13A	APP CRS 133°	Rwy Idg 7000 TDZE 1031 Apt Elev 1031
--	------------------------	--

RNAV (GPS) RWY 13

ST CLOUD RGNL (STC)

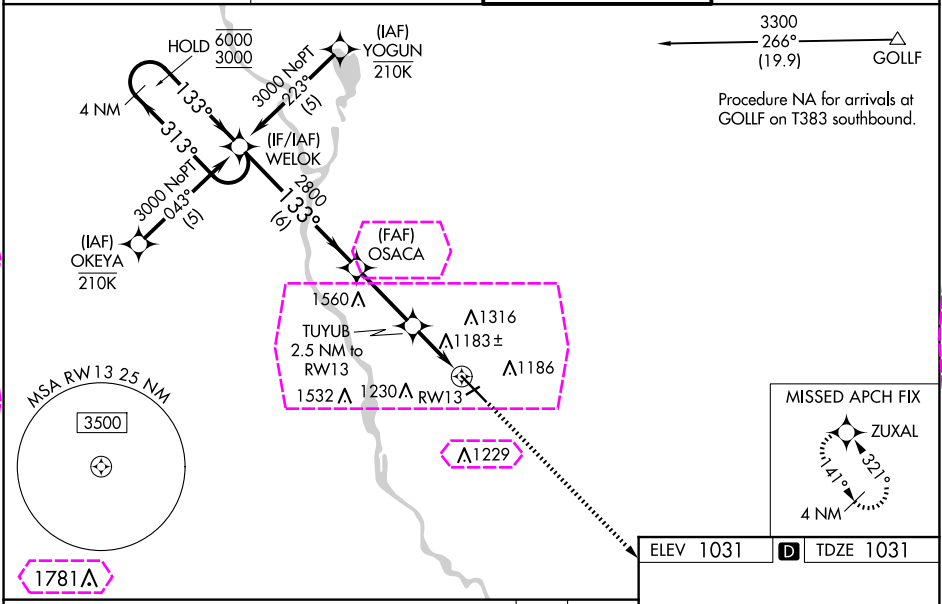
RNP APCH - GPS.

Baro-VNAV and VDP NA when using Little Falls altimeter setting. For uncompensated Baro-VNAV systems, LNAV/VNAV NA below -21 °C or above 54°C. When local altimeter setting not received, use Little Falls altimeter setting, increase LPV DA to 1307 feet; increase LNAV/VNAV DA to 1516 feet and all visibilities ¼ SM; increase all MDAs 80 feet and LNAV visibility Cat C and D ¼ SM, and Circling visibility Cat C and D ¼ SM. For inop ALS, increase LNAV/VNAV visibility all Cats and LNAV Cat C and D visibility to 1½ SM. When local altimeter not received and ALS inop, increase LPV visibility all Cats to ¾ SM, LNAV/VNAV visibility all Cats and LNAV Cat C and D to 1¾ SM.

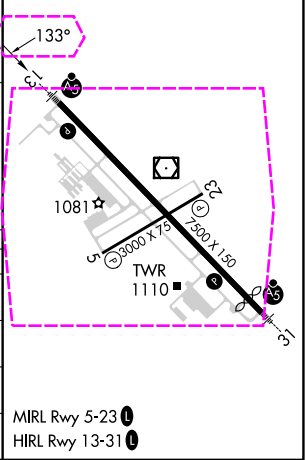
MALSR

MISSED APPROACH:
Climb to 3000 direct
ZUXAL and hold.

ATIS 119.375	MINNEAPOLIS CENTER 121.05 235.775	ST. CLOUD TOWER ★ 118.25 (CTAF) 0	GND CON 123.75
------------------------	---	---	--------------------------



4 NM Holding Pattern		WELOK	OSACA	TUYUB	ZUXAL
6000 ← 313°		3000	2800	2.5 NM to RWY13	1.1 NM to RWY13
3000 → 133°		133°	2800	1880	RWY13
GP 3.00°		TCH 49	6 NM	2.9 NM	1.4 NM
CATEGORY	A	B	C	D	
LPV DA	1231-½		200 (200-½)		
LNAV/VNAV DA	1440-¾		409 (500-¾)		
LNAV MDA	1440-½	409 (500-½)	1440-¾	409 (500-¾)	
CIRCLING	1500-1	469 (500-1)	1620-1½ 589 (600-1½)	1860-2¾ 829 (900-2¾)	



ST. CLOUD, MINNESOTA

AL-5799 (FAA)

25219

WAAS CH 82013 W13A	APP CRS 133°	Rwy Ldg TDZE Apt Elev	7000 1031 1031
--	------------------------	-----------------------------	---

RNAV (GPS) RWY 13

ST CLOUD RGNL (STC)

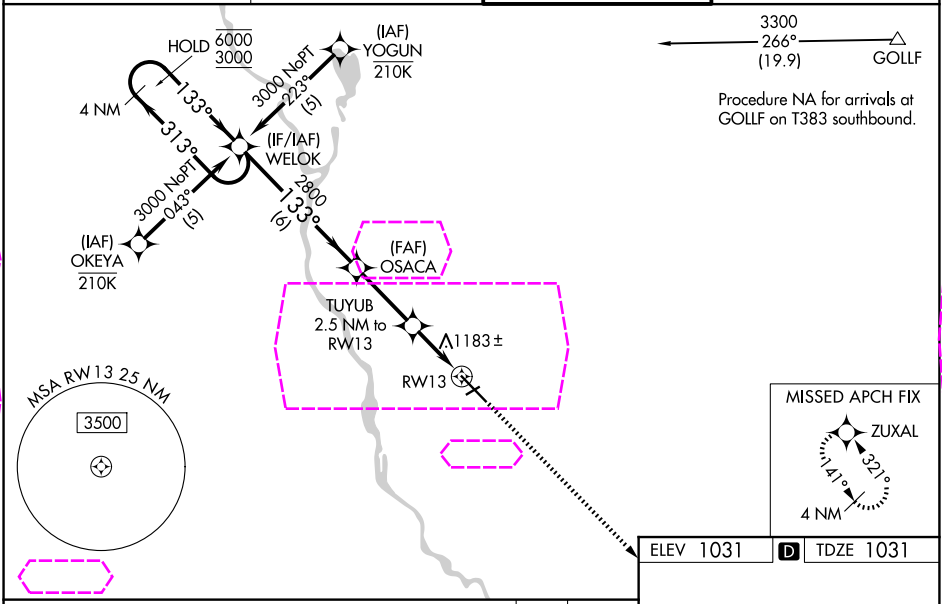
RNP APCH - GPS.

Baro-VNAV and VDP NA when using Little Falls altimeter setting. For uncompensated Baro-VNAV systems, LNAV/VNAV NA below -21°C or above 54°C. When local altimeter setting not received, use Little Falls altimeter setting, increase LPV DA to 1307 feet; increase LNAV/VNAV DA to 1516 feet and all visibilities ¼ SM; increase all MDAs 80 feet and LNAV visibility Cat C and D ¼ SM, and Circling visibility Cat C and D ¼ SM. For inop ALS, increase LNAV/VNAV visibility all Cats and LNAV Cat C and D visibility to 1½ SM. When local altimeter not received and ALS inop, increase LPV visibility all Cats to ¾ SM, LNAV/VNAV visibility all Cats and LNAV Cat C and D to 1¾ SM.

MALSR

MISSED APPROACH:
Climb to 3000 direct ZUXAL and hold.

ATIS 119.375	MINNEAPOLIS CENTER 121.05 235.775	ST. CLOUD TOWER ★ 118.25 (CTAF) 0	GND CON 123.75
------------------------	---	---	--------------------------



WELOK 4 NM Holding Pattern

6000 ← 313°
3000 133° →

GP 3.00°
TCH 49

OSACA 2800

TUYUB 2.5 NM to RW13

1.1 NM to RW13

RW13

3000 ZUXAL

133°

5.1 NM

5.2 NM

5.3 NM

5.4 NM

5.5 NM

5.6 NM

5.7 NM

5.8 NM

5.9 NM

6.0 NM

6.1 NM

6.2 NM

6.3 NM

6.4 NM

6.5 NM

6.6 NM

6.7 NM

6.8 NM

6.9 NM

7.0 NM

7.1 NM

7.2 NM

7.3 NM

7.4 NM

7.5 NM

7.6 NM

7.7 NM

7.8 NM

7.9 NM

8.0 NM

8.1 NM

8.2 NM

8.3 NM

8.4 NM

8.5 NM

8.6 NM

8.7 NM

8.8 NM

8.9 NM

9.0 NM

9.1 NM

9.2 NM

9.3 NM

9.4 NM

9.5 NM

9.6 NM

9.7 NM

9.8 NM

9.9 NM

10.0 NM

CATEGORY	A	B	C	D
LPV DA		1231-½	200 (200-½)	
LNAV/VNAV DA		1440-¾	409 (500-¾)	
LNAV MDA	1440-½	409 (500-½)	1440-¾	409 (500-¾)
CIRCLING	1500-1	469 (500-1)	1620-1½ 589 (600-1½)	1860-2¾ 829 (900-2¾)

MIRL Rwy 5-23 0

HIRL Rwy 13-31 0

ST. CLOUD, MINNESOTA
Amdt 2 21MAR24

45°33'N-94°04'W

RNAV (GPS) RWY 13

ST CLOUD RGNL (STC)

NC-1, 07 AUG 2025 to 04 SEP 2025

NC-1, 07 AUG 2025 to 04 SEP 2025