

LOC I-STD <b>111.9</b>	APP CRS <b>313°</b>	Rwy Idg TDZE App Elev	<b>7000</b> <b>1020</b> <b>1031</b>
---------------------------	------------------------	-----------------------------	---

ILS or LOC RWY 31  
ST CLOUD RGNL (STC)

DME required.

**NA** When local altimeter setting not received, use Little Falls altimeter setting, increase DA to 1296 feet, increase all MDAs 80 feet and S-LOC 31 visibility. Cats C and D  $\frac{1}{4}$  SM, and Circling visibility Cats C and D  $\frac{1}{4}$  SM. For Inop ALS when using Little Falls altimeter setting, increase S-ILS 31 visibility to  $\frac{1}{2}$  SM and S-LOC-31 Cats C and D visibility to  $\frac{1}{2}$  SM. VDP NA when using Little Falls altimeter setting. DME from STC VOR/DME. DME use requires simultaneous reception of I-STC and STC DME.

MALSR



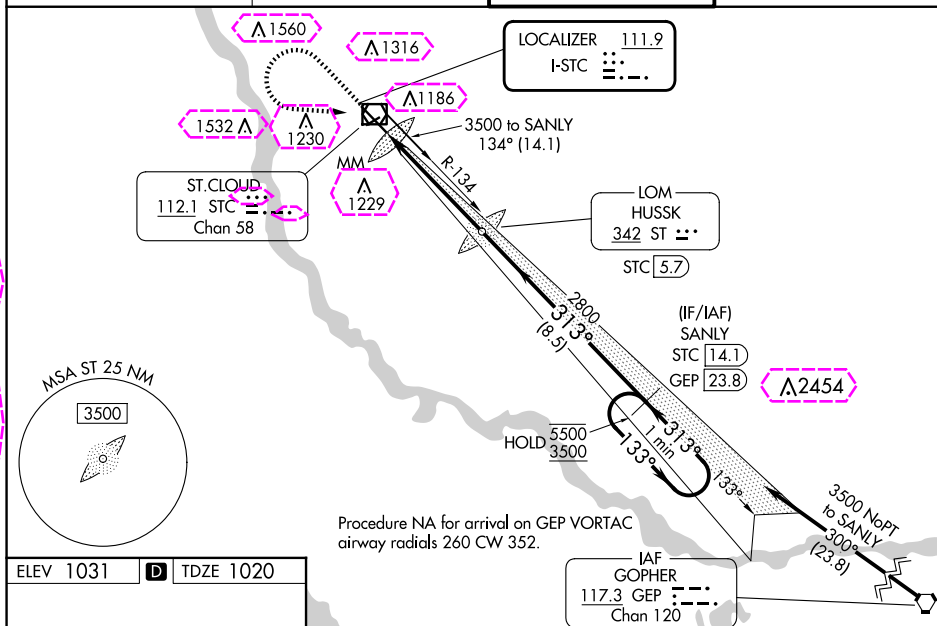
**MISSED APPROACH:** Climb to 2800 then climbing left turn to 3500 direct STC VOR/DME and on STC VOR/DME R-134 to SANLY/STC VOR/DME 14.1 DME and hold.

ATIS  
119.375

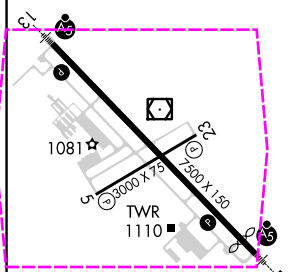
MINNEAPOLIS CENTER  
121.05 235.775

ST. CLOUD TOWER ★  
118.25 (CTAF) L

GND CON  
123.75



ELEV 1031	<b>D</b>	TDZE 1020
-----------	----------	-----------



MIRL Rwy 5-23 **L**  
HIRL Rwy 13-31 **L**

FAF to MAP 5 NM

Knots	60	90	120	150	180
Min:Sec	5:00	3:20	2:30	2:00	1:40

ST. CLOUD, MINNESOTA

Amdt 4A 26DEC24

<div><div>2800</div><div></div></div> <div><div>3500</div><div></div></div> <div><div>STC</div><div></div></div> <div><div>STC R-134</div><div></div></div> <div><div>SANLY</div><div>STC 14.1</div></div>				
<div><div></div><div>STC 1.9</div><div>ST LOM HUSS STC 5.7</div><div>SANLY STC 14.1</div><div>2671</div><div>313°</div><div>133°</div><div>5500</div><div>3500</div><div>GS 3.00°</div><div>TCH 51</div></div>				
CATEGORY	A	B	C	D
S-ILS 31	1220-1/2 200 (200-1/2)			
S-LOC 31	1460-1/2 440 (500-1/2)	1460-3/4 440 (500-3/4)		
CIRCLING	1500-1 469 (500-1)	1620-11/2 589 (600-11/2)	1860-23/4 829 (900-23/4)	

ST CLOUD RGNL (STC)

ILS or LOC RWY 31

45°33'N-94°04'W

LOC I-STD <b><u>111.9</u></b>	APP CRS <b>313°</b>	Rwy Ldg TDZE App Elev	<b>7000</b> <b>1020</b> <b>1031</b>
----------------------------------	------------------------	-----------------------------	---

ILS or LOC RWY 31  
ST CLOUD RGNL (STC)

DME required.

**NA** When local altimeter setting not received, use Little Falls altimeter setting, increase DA to 1296 feet, increase all MDAs 80 feet and S-LOC 31 visibility. Cats C and D  $\frac{1}{4}$  SM, and Circling visibility Cats C and D  $\frac{1}{4}$  SM. For Inop ALS when using Little Falls altimeter setting, increase S-ILS 31 visibility to  $\frac{1}{2}$  SM and S-LOC-31 Cats C and D visibility to  $\frac{1}{2}$  SM. VDP NA when using Little Falls altimeter setting. DME from STC VOR/DME. DME use requires simultaneous reception of I-STC and STC DME.

MALS R



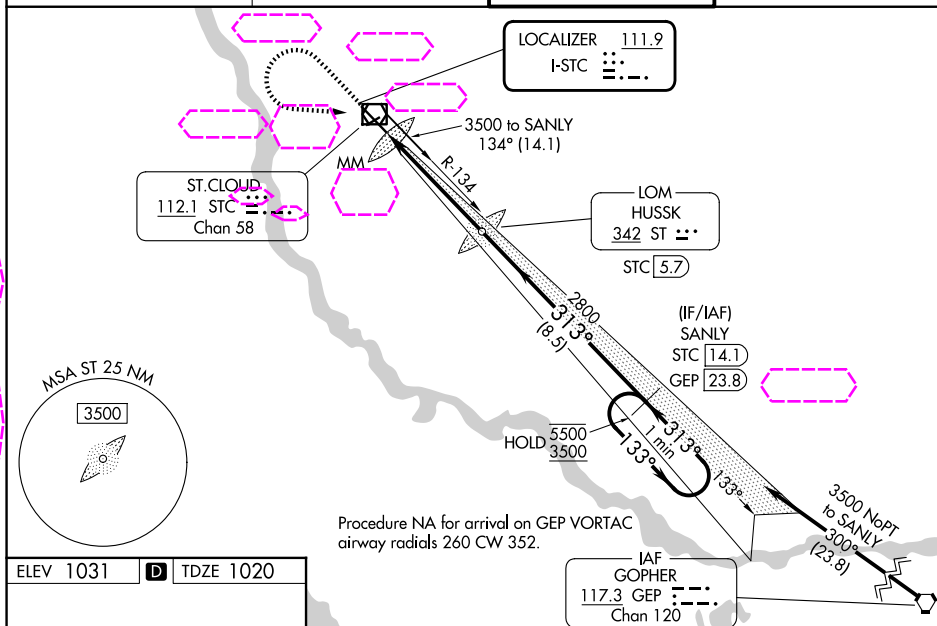
**MISSED APPROACH:** Climb to 2800 then climbing left turn to 3500 direct STC VOR/DME and on STC VOR/DME R-134 to SANLY/STC VOR/DME 14.1 DME and hold.

ATIS  
119.375

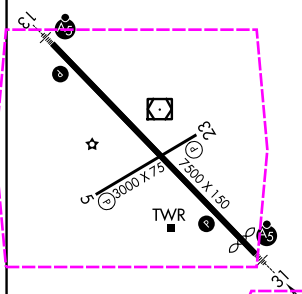
MINNEAPOLIS CENTER  
121.05 235.775

ST. CLOUD TOWER ★  
118.25 (CTAF) L

GND CON  
123.75



ELEV 1031	<b>D</b>	TDZE 1020
-----------	----------	-----------



MIRL Rwy 5-23 **L**  
HIRL Rwy 13-31 **L**

FAF to MAP 5 NM

Knots	60	90	120	150	180
Min:Sec	5:00	3:20	2:30	2:00	1:40

ST. CLOUD, MINNESOTA

Amdt 4A 26DEC24

			STC R-134	SANLY STC 14.1	SANLY STC 14.1			
					One Minute Holding Pattern			
CATEGORY					A			
S-ILS 31					1220-1/2 200 (200-1/2)			
S-LOC 31					1460-1/2 440 (500-1/2)			
CIRCLING					1500-1 469 (500-1)			
1620-1 589 (600-1 1/2)					1860-2 3/4 829 (900-2 3/4)			

ST CLOUD RGNL (STC)

ILS or LOC RWY 31

45°33'N-94°04'W

NC-1, 07 AUG 2025 to 04 SEP 2025

NC-1, 07 AUG 2025 to 04 SEP 2025