

ST. CLOUD, MINNESOTA

AL-5799 (FAA)

24333

LOC I-BPM 111.9	APP CRS 133°	Rwy Idg TDZE Apt Elev	7000 1031 1031
---------------------------	------------------------	-----------------------------	---

ILS or LOC RWY 13

ST CLOUD RGNL (STC)

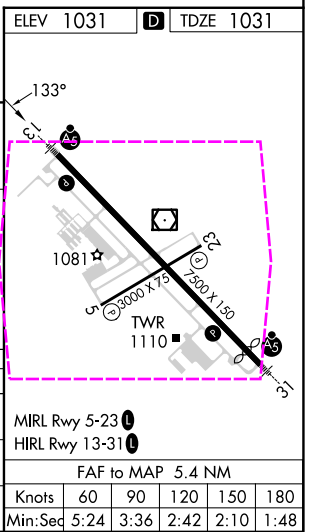
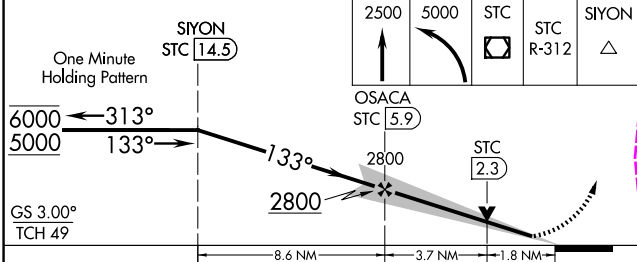
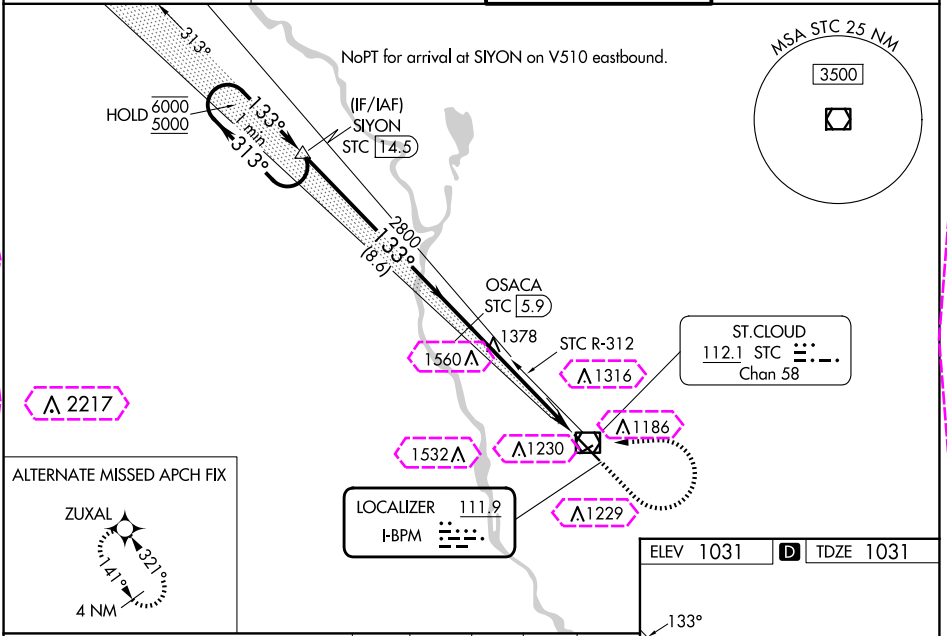
DME required.

⚠ For inop ALS when using Little Falls altimeter setting, increase S-ILS-13 all Cats visibility to ¾ SM. When local altimeter setting not received, use Little Falls altimeter setting, increase DA to 1307 feet; increase all MDAs 80 feet and S-LOC 13 visibility Cats C and D ¼ SM, and Circling visibility Cats C and D ¼ SM. For inop ALS, increase S-LOC 13 Cats C and D visibility to 1 ¼ SM. DME from STC VOR/DME. DME use requires simultaneous reception of I-BPM and STC DME. VDP NA when using Little Falls altimeter setting.

MALSR

MISSED APPROACH: Climb to 2500 then climbing left turn to 5000 direct STC VOR/DME and on STC VOR/DME R-312 to SIYON/STC 14.5 DME and hold.

ATIS 119.375	MINNEAPOLIS CENTER 121.05 235.775	ST. CLOUD TOWER ★ 118.25 (CTAF) 0	GND CON 123.75
------------------------	---	---	--------------------------



CATEGORY	A	B	C	D
S-ILS 13	1231-½ 200 (200-½)			
S-LOC 13	1640-½ 609 (700-½)		1640-1¾ 609 (700-1¾)	
CIRCLING	1640-1 609 (700-1)		1640-1¾ 609 (700-1¾) 1860-2¾ 829 (900-2¾)	

ST. CLOUD, MINNESOTA
Amdt 2 21MAR24

45°33'N-94°04'W

ST CLOUD RGNL (STC) ILS or LOC RWY 13

NC-1, 10 JUL 2025 to 07 AUG 2025

NC-1, 10 JUL 2025 to 07 AUG 2025

ST. CLOUD, MINNESOTA

AL-5799 (FAA)

25219

LOC I-BPM	APP CRS	Rwy Ldg	7000
111.9	133°	TDZE	1031
		Apt Elev	1031

ILS or LOC RWY 13

ST CLOUD RGNL (STC)

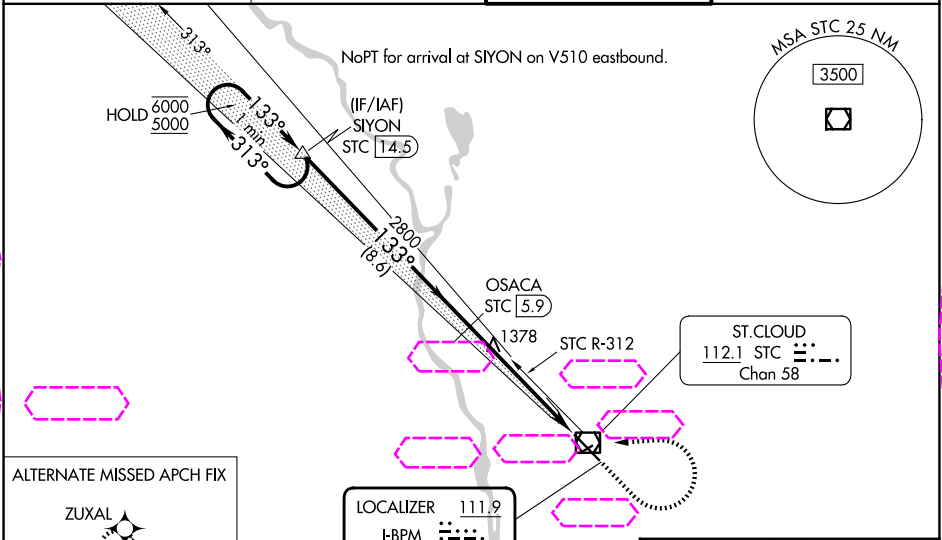
DME required.

⚠ For inop ALS when using Little Falls altimeter setting, increase S-ILS-13 all Cats visibility to 7/8 SM. When local altimeter setting not received, use Little Falls altimeter setting, increase DA to 1307 feet; increase all MDAs 80 feet and S-LOC 13 visibility Cats C and D 1/4 SM, and Circling visibility Cats C and D 1/4 SM. For inop ALS, increase S-LOC 13 Cats C and D visibility to 1 1/4 SM. DME from STC VOR/DME. DME use requires simultaneous reception of I-BPM and STC DME. VDP NA when using Little Falls altimeter setting.

MALSR

MISSED APPROACH: Climb to 2500 then climbing left turn to 5000 direct STC VOR/DME and on STC VOR/DME R-312 to SIYON/STC 14.5 DME and hold.

ATIS 119.375	MINNEAPOLIS CENTER 121.05 235.775	ST. CLOUD TOWER ★ 118.25 (CTAF) 0	GND CON 123.75
-----------------	--------------------------------------	--------------------------------------	-------------------



One Minute Holding Pattern

SIYON STC 14.5

OSACA STC 5.9

STC 2.3

GS 3.00°
TCH 49

8.6 NM 3.7 NM 1.8 NM

ELEV 1031 D TDZE 1031

MIRL Rwy 5-23 0
HIRL Rwy 13-31 0

FAF to MAP 5.4 NM

Knots	60	90	120	150	180
Min:Seq	5:24	3:36	2:42	2:10	1:48

CATEGORY	A	B	C	D
S-ILS 13	1231-1/2 200 (200-1/2)			
S-LOC 13	1640-1/2 609 (700-1/2)		1640-1 3/8 609 (700-1 3/8)	
CIRCLING	1640-1 609 (700-1)		1640-1 3/4 609 (700-1 3/4) 829 (900-2 3/4)	

ST. CLOUD, MINNESOTA
Amdt 2 21MAR24

45°33'N-94°04'W

ST CLOUD RGNL (STC) ILS or LOC RWY 13

NC-1, 07 AUG 2025 to 04 SEP 2025

NC-1, 07 AUG 2025 to 04 SEP 2025