

STATESBORO, GEORGIA

AL-5797 (FAA)

24361

WAAS CH 81829 W32A	APP CRS 320°	Rwy Idg TDZE Apt Elev	5701 179 187
--	------------------------	-----------------------------	---

RNAV (GPS) RWY 32

STATESBORO-BULLOCH COUNTY (TBR)

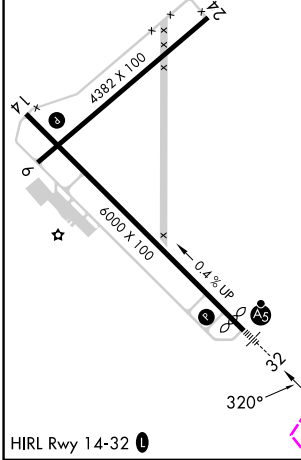
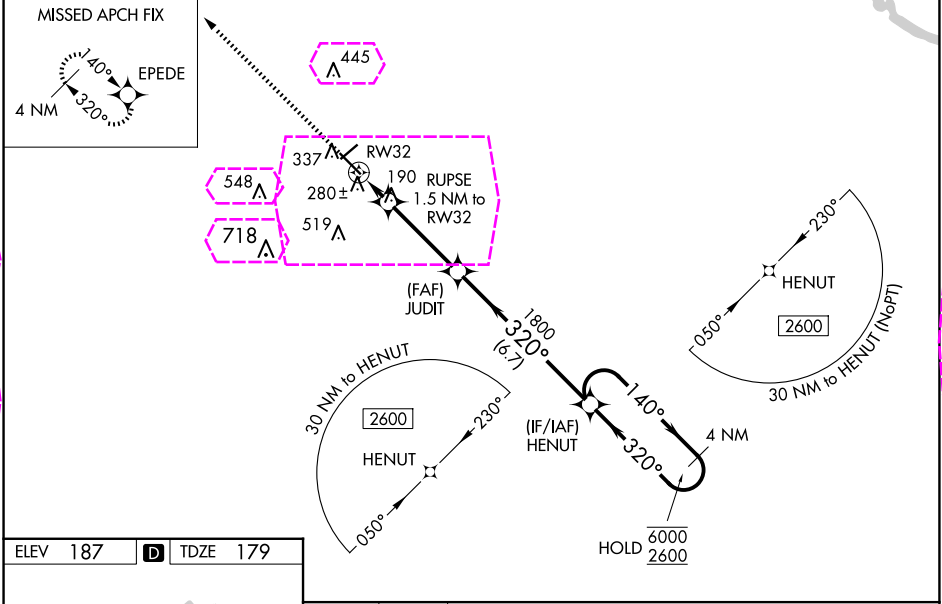
RNP APCH-GPS.

⚠ Circling to Rwy 6/24 NA at night. Baro-VNAV NA when using Sylvania altimeter setting.
⚠ For uncompensated Baro-VNAV systems, LNAV/VNAV NA below -15°C or above 54°C.
For inop ALS. Increase LNAV/VNAV all Cats visibility to ¾ SM and LNAV Cats C/D to 1½ SM.
When local altimeter setting not received. Use Sylvania altimeter setting and increase LPV DA to 408 feet; increase LNAV/VNAV DA to 490 feet; increase all MDAs 40 feet and LNAV visibility Cat C/D ½ SM, and Circling visibility Cat C ¼ SM. For inop ALS when using Sylvania altimeter setting, increase LNAV/VNAV all Cats visibility to ¾ SM and LNAV Cat C/D to 1½ SM.

MALSR

MISSED APPROACH:
Climb to 2600 direct
EPEDE and hold.

AWOS-3 119.025	SAVANNAH APP CON★ 118.4 354.0	UNICOM 122.725 (CTAF) 0
--------------------------	---	-----------------------------------



2600	EPEDE				
		JUDIT	HENUT		4 NM Holding Pattern
		RUPSE	1800		140° → 6000 ← 320° 2600
		1.5 NM to RW32			GP 3.00° TCH 49
		680	1800		
		1.5 NM	3.5 NM	6.7 NM	
CATEGORY	A	B	C	D	
LPV DA	379-½		200 (200-½)		
LNAV/VNAV DA	461-½		282 (300-½)		
LNAV MDA	540-½		540-⅝		361 (400-⅝)
C CIRCLING	640-1 453 (500-1)	740-1 553 (600-1)	840-1¾ 653 (700-1¾)	860-2¼ 673 (700-2¼)	

STATESBORO, GEORGIA
Amdt 4 29DEC22

STATESBORO-BULLOCH COUNTY (TBR)
32°29'N-81°44'W
RNAV (GPS) RWY 32

SE-4, 10 JUL 2025 to 07 AUG 2025

SE-4, 10 JUL 2025 to 07 AUG 2025

STATESBORO, GEORGIA

AL-5797 (FAA)

25219


WAAS CH 81829 W32A	APP CRS 320°	Rwy Ldg TDZE Apt Elev	5701 179 187
--	------------------------	-----------------------------	---

RNAV (GPS) RWY 32
STATESBORO-BULLOCH COUNTY (TBR)

RNP APCH-GPS.

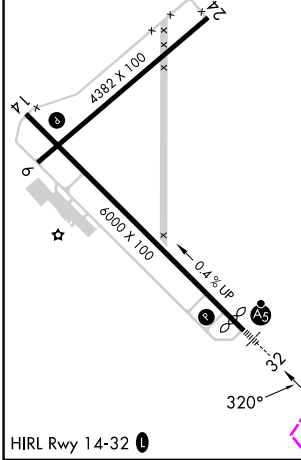
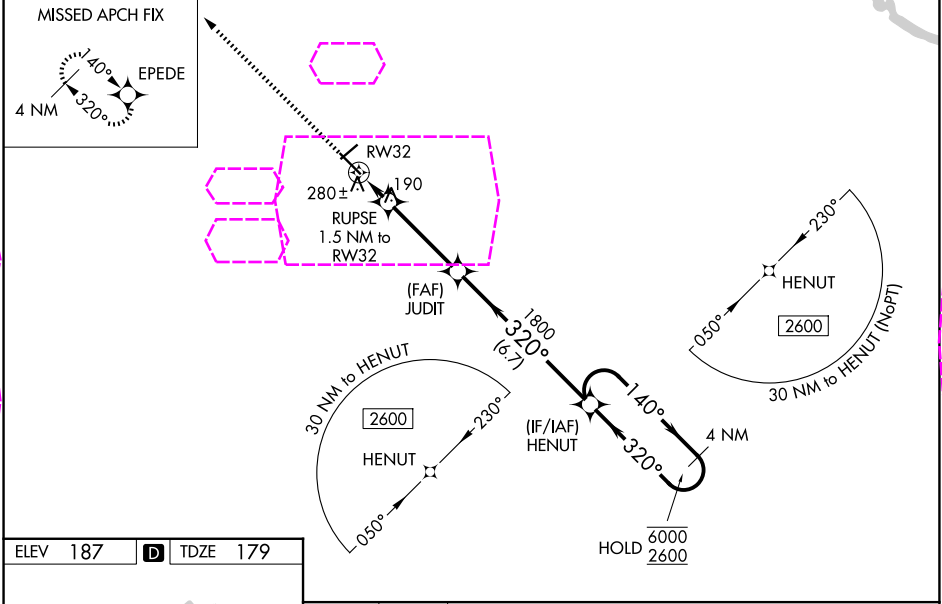
⚠ Circling to Rwy 6/24 NA at night. Baro-VNAV NA when using Sylvania altimeter setting.
⚠ For uncompensated Baro-VNAV systems, LNAV/VNAV NA below -15°C or above 54°C.
For inop ALS. Increase LNAV/VNAV all Cats visibility to ¾ SM and LNAV Cats C/D to 1½ SM.
When local altimeter setting not received. Use Sylvania altimeter setting and increase LPV DA to 408 feet; increase LNAV/VNAV DA to 490 feet; increase all MDAs 40 feet and LNAV visibility Cat C/D ½ SM, and Circling visibility Cat C ¼ SM. For inop ALS when using Sylvania altimeter setting, increase LNAV/VNAV all Cats visibility to ¾ SM and LNAV Cat C/D to 1½ SM.


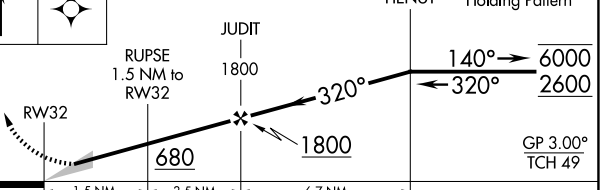
MALSR



MISSED APPROACH:
Climb to 2600 direct
EPEDE and hold.

AWOS-3 119.025	SAVANNAH APP CON ★ 118.4 307.225	UNICOM 122.725 (CTAF) 0
--------------------------	--	-----------------------------------



2600	EPEDE	HENUT Holding Pattern			
					
RWY 32		JUDIT	HENUT		
RUPSE 1.5 NM to RWY 32		1800	6000 2600		
680		320°	140°		
1.5 NM		3.5 NM	6.7 NM		
CATEGORY	A	B	C	D	
LPV DA	379-½		200 (200-½)		
LNAV/VNAV DA	461-½		282 (300-½)		
LNAV MDA	540-½		540-⅝		361 (400-⅝)
CIRCLING	640-1 453 (500-1)	740-1 553 (600-1)	840-1¾ 653 (700-1¾)	860-2¼ 673 (700-2¼)	

STATESBORO, GEORGIA
Amdt 4 29DEC22

STATESBORO-BULLOCH COUNTY (TBR)
32°29'N-81°44'W
RNAV (GPS) RWY 32

SE-4, 07 AUG 2025 to 04 SEP 2025

SE-4, 07 AUG 2025 to 04 SEP 2025