

STATESBORO, GEORGIA

AL-5797 (FAA)

24361

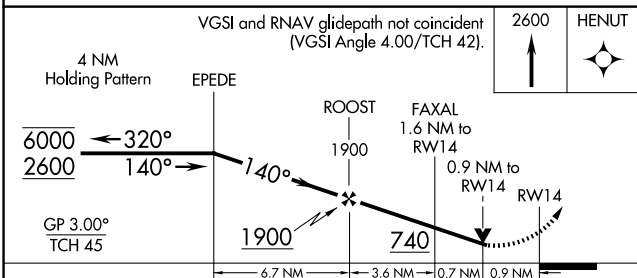
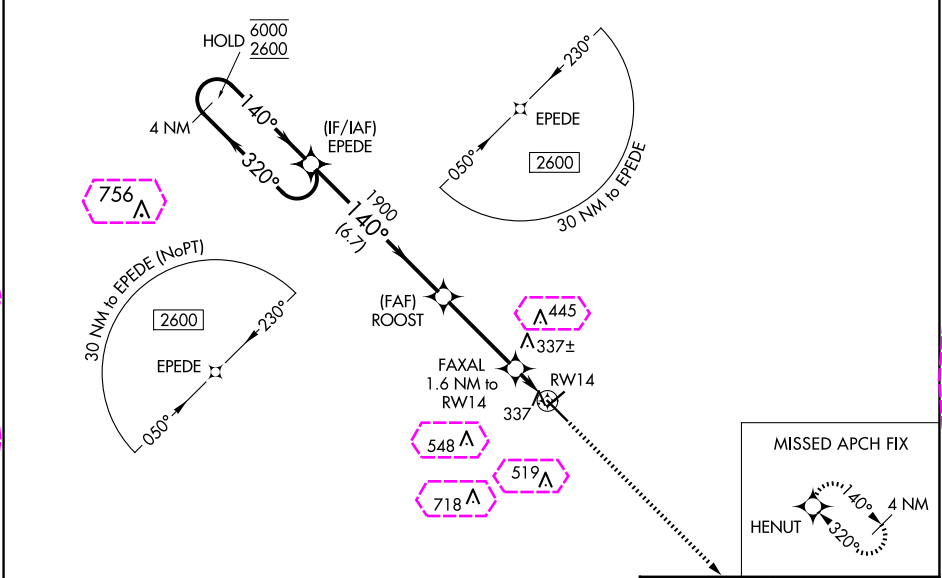
WAAS CH 49144 W14A	APP CRS 140°	Rwy Idg TDZE 181 Apt Elev 187
--	------------------------	---

RNAV (GPS) RWY 14
STATESBORO-BULLOCH COUNTY (TBR)

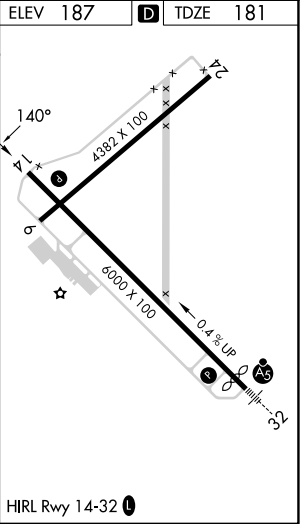
RNP APCH-GPS.
Circling to Rwy 6/24 NA at night. Baro-VNAV and VDP NA when using Sylvania altimeter setting.
Rwy 14 helicopter visibility reduction below $\frac{3}{4}$ SM NA. For uncompensated Baro-VNAV systems, LNAV/VNAV NA below -15°C or above 54°C. When local altimeter setting not received, use Sylvania altimeter setting and increase LPV DA to 525 feet and all visibilities $\frac{1}{2}$ SM. Increase LNAV/VNAV DA to 547 feet; increase all MDAs 40 feet and LNAV visibility Cat C/D $\frac{1}{4}$ SM, and Circling visibility Cat C $\frac{1}{4}$ SM.

MISSED APPROACH:
Climb to 2600 direct HENUT and hold.

AWOS-3 119.025	SAVANNAH APP CON★ 118.4 354.0	UNICOM 122.725 (CTAF) 0
--------------------------	---	-----------------------------------



CATEGORY	A	B	C	D
LPV DA	496-7 $\frac{7}{8}$	315 (400-7 $\frac{7}{8}$)		
LNAV/VNAV DA	518-1	337 (400-1)		
LNAV MDA	600-1	419 (500-1)	600-1 $\frac{1}{8}$	419 (500-1 $\frac{1}{8}$)
CIRCLING	640-1 453 (500-1)	740-1 553 (600-1)	840-1 $\frac{3}{4}$ 653 (700-1 $\frac{3}{4}$)	860-2 $\frac{1}{4}$ 673 (700-2 $\frac{1}{4}$)



STATESBORO, GEORGIA
Orig 29DEC22

32°29'N-81°44'W

STATESBORO-BULLOCH COUNTY (TBR)
RNAV (GPS) RWY 14

STATESBORO, GEORGIA

AL-5797 (FAA)

25219

WAAS CH 49144 W14A	APP CRS 140°	Rwy Ldg TDZE 181 Apt Elev 187
--	------------------------	---

RNAV (GPS) RWY 14
STATESBORO-BULLOCH COUNTY (TBR)

RNP APCH-GPS.

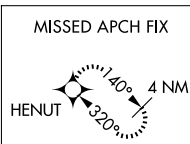
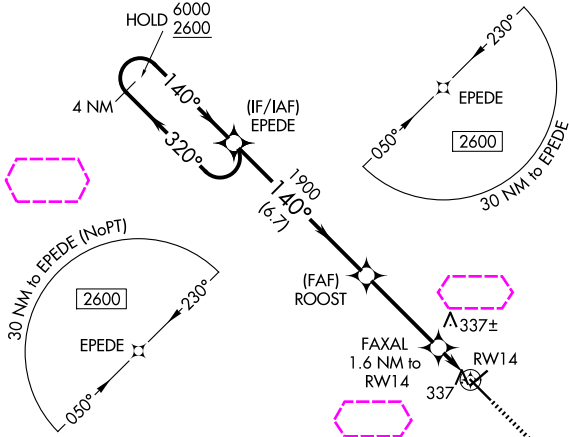
⚠ Circling to Rwy 6/24 NA at night. Baro-VNAV and VDP NA when using Sylvania altimeter setting.
⚠ Rwy 14 helicopter visibility reduction below $\frac{3}{4}$ SM NA. For uncompensated Baro-VNAV systems, LNAV/VNAV NA below -15°C or above 54°C. When local altimeter setting not received, use Sylvania altimeter setting and increase LPV DA to 525 feet and all visibilities $\frac{1}{2}$ SM. Increase LNAV/VNAV DA to 547 feet; increase all MDAs 40 feet and LNAV visibility Cat C/D $\frac{1}{4}$ SM, and Circling visibility Cat C $\frac{1}{4}$ SM.

MISSED APPROACH:
Climb to 2600 direct
HENUT and hold.

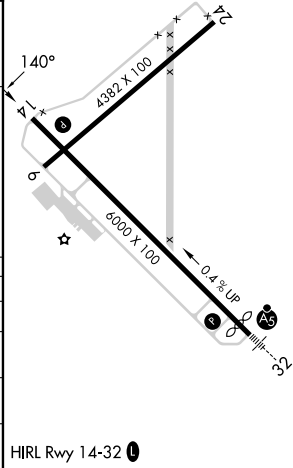
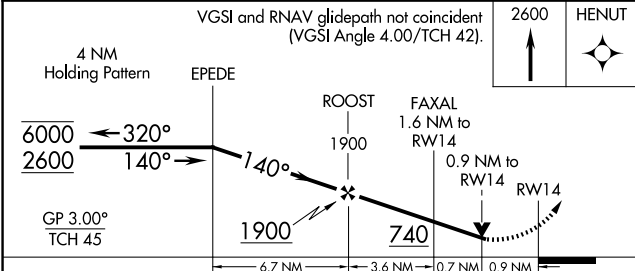
AWOS-3
119.025

SAVANNAH APP CON ★
118.4 307.225

UNICOM
122.725 (CTAF) 0



ELEV 187 D TDZE 181



CATEGORY	A	B	C	D
LPV DA	496-7 $\frac{7}{8}$	315 (400-7 $\frac{7}{8}$)		
LNAV/VNAV DA	518-1	337 (400-1)		
LNAV MDA	600-1	419 (500-1)	600-1 $\frac{1}{8}$	419 (500-1 $\frac{1}{8}$)
CIRCLING	640-1 453 (500-1)	740-1 553 (600-1)	840-1 $\frac{3}{4}$ 653 (700-1 $\frac{3}{4}$)	860-2 $\frac{1}{4}$ 673 (700-2 $\frac{1}{4}$)

STATESBORO, GEORGIA
Orig 29DEC22

32°29'N-81°44'W

STATESBORO-BULLOCH COUNTY (TBR)
RNAV (GPS) RWY 14