

STATESBORO, GEORGIA


AL-5797 (FAA)

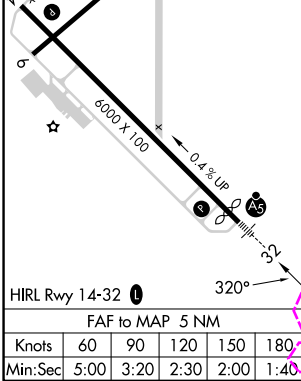
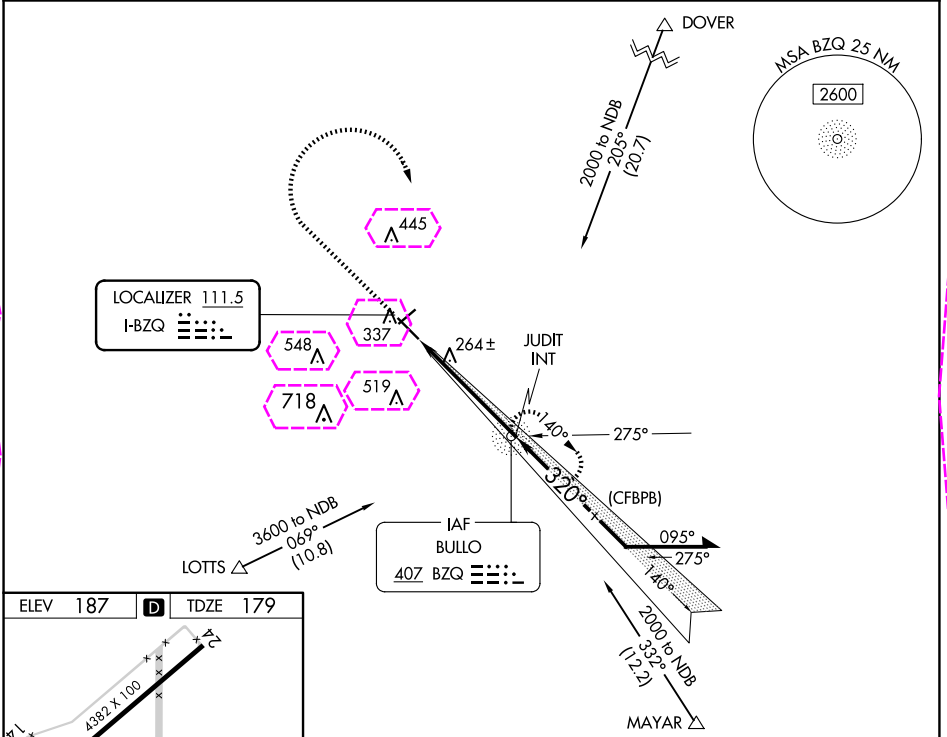
25135

LOC I-BZQ	APP CRS	Rwy Ldg	5701
111.5	320°	TDZE	179
		Apt Elev	187

ILS or LOC RWY 32

STATESBORO-BULLOCH COUNTY (TBR)

ADF required.		MALSR 	MISSED APPROACH: Climb to 1300 then climbing right turn to 2000 direct BZQ NDB and hold.
<div><div><div>▼</div><div>▲</div></div><div>Circling to Rwy 6, 24 NA at night. When local altimeter setting not received, use JYL altimeter setting and increase S-ILS 32 DA to 408 feet; increase all MDAs 40 feet; and Circling visibility Cat C ¼ SM. For inop ALS, increase S-LOC 32 Cat C and D visibility to 1 SM.</div></div>			
AWOS-3 119.025	SAVANNAH APP CON ★ 118.4 354.0		



1300	2000	BZQ	BZQ NDB		Remain within 10 NM
			JUDIT INT	1800	2000
			1800	320°	GS 3.00°
			1800	140°	TCH 49
5 NM					
CATEGORY		A	B	C	D
S-ILS 32		379-1/2 200 (200-1/2)			
S-LOC 32		520-1/2	341 (400-1/2)	520-5/8	341 (400-3/8)
CIRCLING		640-1	740-1	840-13/4	860-21/4
		453 (500-1)	553 (600-1)	653 (700-13/4)	673 (700-21/4)

STATESBORO, GEORGIA

Amdt 4A 26DEC24

32°29'N-81°44'W

STATESBORO-BULLOCH COUNTY (TBR)

ILS or LOC RWY 32

