

ORLANDO, FLORIDA

AL-5793 (FAA)

23334

WAAS CH 69229 W06A	APP CRS 063°	Rwy Idg 5001 TDZE 82 Apt Elev 82
--	------------------------	---

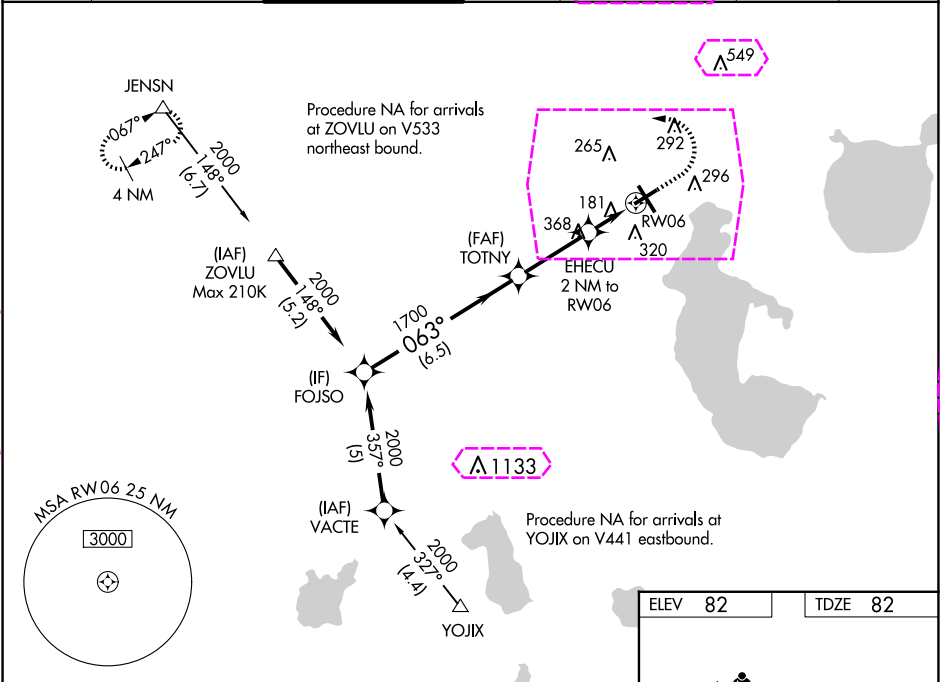
RNAV (GPS) RWY 6

KISSIMMEE GATEWAY (ISM)

⚠ Baro-VNAV NA when using Orlando Intl altimeter setting. For uncompensated Baro-VNAV systems, LNAV/VNAV NA below -15°C (5°F) or above 43°C (109°F). DME/DME RNP-0.3 NA. Helicopter visibility reduction below ¾ SM NA. When local altimeter setting not received, use Orlando Intl altimeter setting and increase all LPV DA to 375, all LNAV/VNAV DA to 484, and all MDA 40 feet; increase LNAV/VNAV all Cats and LNAV Cat C/D visibility ½ SM, and Circling Cat C visibility ¼ SM.

MISSED APPROACH: Climb to 600 then climbing left turn to 4000 direct JENSN and hold, continue climb-in-hold to 4000.

ATIS 128.775	ORLANDO APP CON 119.4 351.9	KISSIMMEE TOWER * 124.45 (CTAF) 0	CLNC DEL 121.7	CLNC DEL 123.95 (when twr closed)	GND CON 121.7	UNICOM 122.95
------------------------	---------------------------------------	---	--------------------------	--	-------------------------	-------------------------



FOJSO 2000 063°

TOTNY 1700

EHECU 2 NM to RW06

*760

RW06

GP 3.00° TCH 45

6.5 NM 3 NM 2 NM

CATEGORY	A	B	C	D
LPV DA	348-1 266 (300-1)			
LNAV/VNAV DA	457-1¼ 375 (400-1¼)			
LNAV MDA	440-1 358 (400-1)			
CIRCLING	620-1 538 (600-1)		680-1½ 598 (600-1½) 700-2 618 (700-2)	

ELEV 82 TDZE 82

REIL Rwy 6, 24 and 33 0

MRL Rwy 15-33 and 6-24 0

ORLANDO, FLORIDA

AL-5793 (FAA)

25219

WAAS CH 69229 W06A	APP CRS 063°	Rwy Ldg 5001 TDZE 82 Apt Elev 82
--	------------------------	---

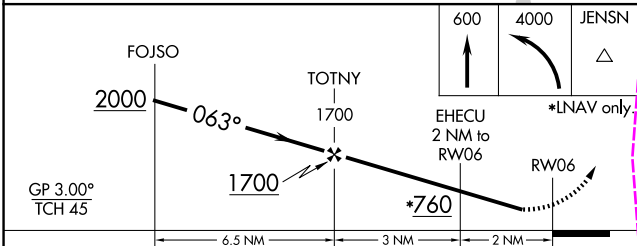
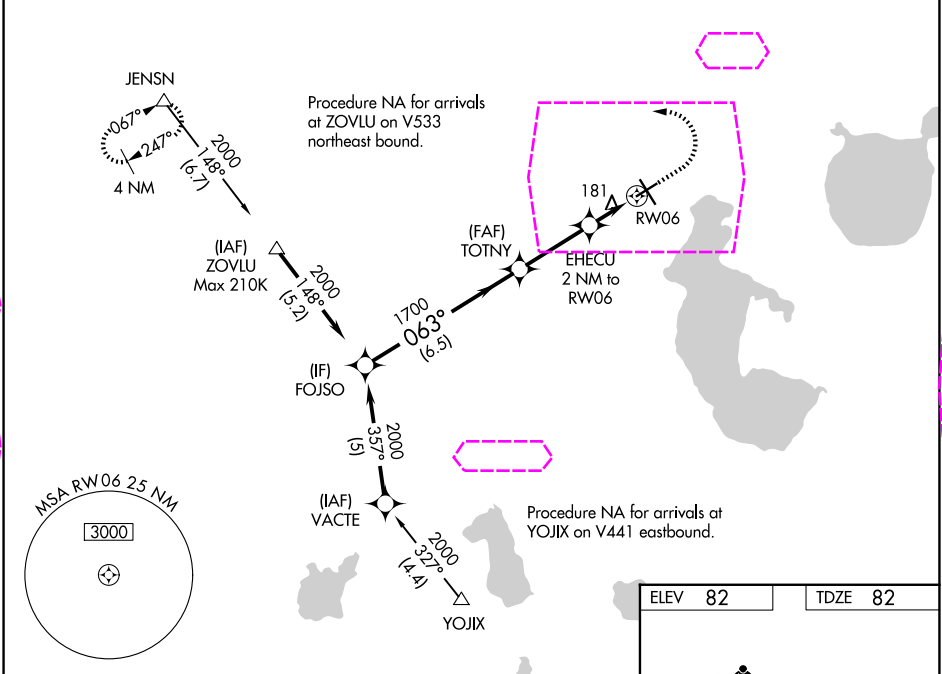
RNAV (GPS) RWY 6

KISSIMMEE GATEWAY (ISM)

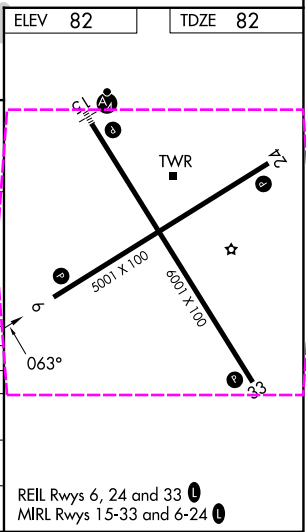
⚠ Baro-VNAV NA when using Orlando Intl altimeter setting. For uncompensated Baro-VNAV systems, LNAV/VNAV NA below -15°C (5°F) or above 43°C (109°F). DME/DME RNP-0.3 NA. Helicopter visibility reduction below ¾ SM NA. When local altimeter setting not received, use Orlando Intl altimeter setting and increase all LPV DA to 375, all LNAV/VNAV DA to 484, and all MDA 40 feet; increase LNAV/VNAV all Cats and LNAV Cat C/D visibility ½ SM, and Circling Cat C visibility ½ SM.

MISSED APPROACH: Climb to 600 then climbing left turn to 4000 direct JENSN and hold, grey climb-in-hold to 4000.

ATIS 128.775	ORLANDO APP CON 119.4 351.9	KISSIMMEE TOWER * 124.45 (CTAF) 0	CLNC DEL 121.7	CLNC DEL 123.95 (When twr closed)	GND CON 121.7	UNICOM 122.95
------------------------	---------------------------------------	---	--------------------------	--	-------------------------	-------------------------



CATEGORY	A	B	C	D
LPV DA		348-1	266 (300-1)	
LNAV/VNAV DA		457-1¼	375 (400-1¼)	
LNAV MDA		440-1	358 (400-1)	
CIRCLING	620-1	538 (600-1)	680-1½ 598 (600-1½)	700-2 618 (700-2)



ORLANDO, FLORIDA
Orig-C 19MAY22

28°17'N-81°26'W

KISSIMMEE GATEWAY (ISM)
RNAV (GPS) RWY 6

SE-3, 07 AUG 2025 to 04 SEP 2025

SE-3, 07 AUG 2025 to 04 SEP 2025