

23334

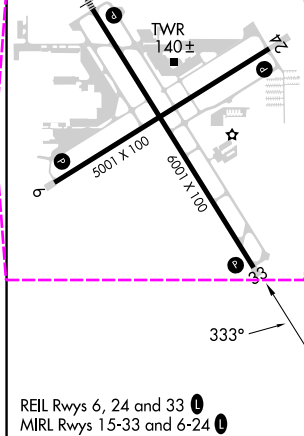
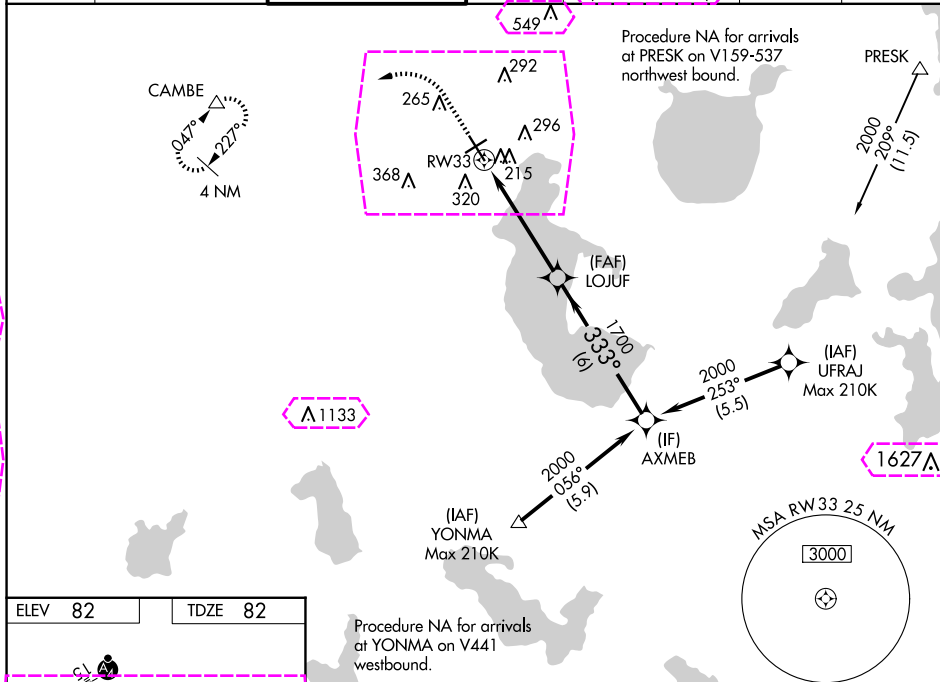
WAAS CH 42900 W33A	APP CRS 333°	Rwy Idg TDZE Apt Elev	6001 82 82
--	------------------------	-----------------------------	---------------------------------------

RNAV (GPS) RWY 33
KISSIMMEE GATEWAY (ISM)

T Baro-VNAV NA when using Orlando Inlt altimeter setting. For uncompensated Baro-VNAV systems, LNAV/VNAV NA below -15°C (5°F) or above 43°C (109°F). Helicopter visibility reduction below $\frac{3}{4}$ SM NA. DME/DME RNP-0.3 NA. When local altimeter setting not received, use Orlando Inlt altimeter setting and increase all LPV DA to 359, all LNAV/VNAV DA to 429, and all MDA 40 feet; increase LNAV/VNAV all Cats visibility $\frac{1}{8}$ SM, LNAV Cat C/D and Circling Cat C visibility $\frac{1}{4}$ SM.

MISSED APPROACH:
Climb to 540 then
climbing left turn to
2000 direct CAMBE
and hold.

ATIS	ORLANDO APP CON	KISSIMMEE TOWER ★	CLNC DEL	CLNC DEL	GND CON	UNICOM
128.775	119.4 351.9	124.45 (CTAF) 0	121.7	123.95 (when twr closed)	121.7	122.95



540 ↑	2000 ↖	CAMBE △				
CATEGORY	A	B	C	D	GP 3.00° TCH 45	
LPV DA	332-1 250 (300-1)					
LNAV/ VNAV DA	402-1 320 (400-1)					
LNAV MDA	480-1 398 (400-1)			480-1½ 398 (400-1½)		
CIRCLING	620-1 538 (600-1)			680-1½ 598 (600-1½)		700-2 618 (700-2)

ORLANDO, FLORIDA
Amdt 2C 19MAY22

28°17'N-81°26'W

KISSIMMEE GATEWAY (ISM)

RNAV (GPS) RWY 33

SE-3, 10 JUL 2025 to 07 AUG 2025

SE-3, 10 JUL 2025 to 07 AUG 2025

ORLANDO, FLORIDA

AL-5793 (FAA)

25219

WAAS CH 42900 W33A	APP CRS 333°	Rwy Ldg TDZE 82 Apt Elev 82	6001
--	------------------------	---	-------------

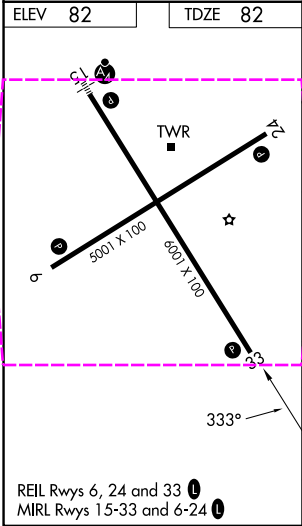
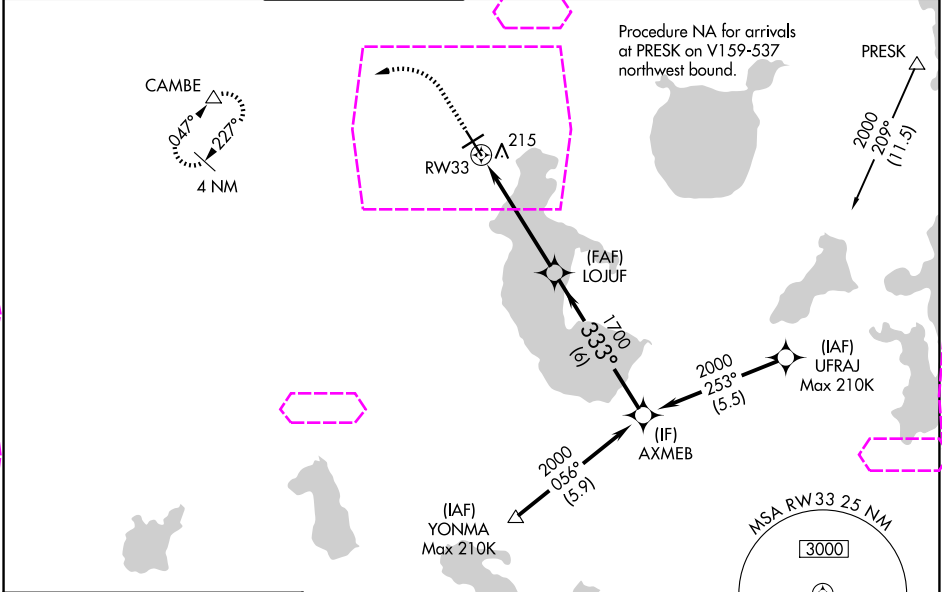
RNAV (GPS) RWY 33

KISSIMMEE GATEWAY (ISM)

Baro-VNAV NA when using Orlando Intl altimeter setting. For uncompensated Baro-VNAV systems, LNAV/VNAV NA below -1.5°C (5°F) or above 43°C (109°F). Helicopter visibility reduction below ¾ SM NA. DME/DME RNP-0.3 NA. When local altimeter setting not received, use Orlando Intl altimeter setting and increase all LPV DA to 359, all LNAV/VNAV DA to 429, and all MDA 40 feet; increase LNAV/VNAV all Cats visibility ½ SM, LNAV Cat C/D and Circling Cat C visibility ¼ SM.

MISSED APPROACH: Climb to 540 then climbing left turn to 2000 direct CAMBE and hold.

ATIS 128.775	ORLANDO APP CON 119.4 351.9	KISSIMMEE TOWER ★ 124.45 (CTAF) 0	CLNC DEL 121.7	CLNC DEL 123.95 (When twr closed)	GND CON 121.7	UNICOM 122.95
------------------------	---------------------------------------	--	--------------------------	--	-------------------------	-------------------------



ELEV 82	TDZE 82	Procedure NA for arrivals at YONMA on V441 westbound.			
540	2000	CAMBE	LOJUF	AXMEB	
↑	↶	△	1700	2000	
RW33			333°		
	5 NM	6 NM			
CATEGORY	A	B	C	D	
LPV DA	332-1 250 (300-1)				
LNAV/VNAV DA	402-1 320 (400-1)				
LNAV MDA	480-1 398 (400-1)		480-1½ 398 (400-1½)		
CIRCLING	620-1 538 (600-1)		680-1½ 598 (600-1½)		700-2 618 (700-2)

ORLANDO, FLORIDA
Amdt 2C 19MAY22

28°17'N-81°26'W

KISSIMMEE GATEWAY (ISM)
RNAV (GPS) RWY 33

SE-3, 07 AUG 2025 to 04 SEP 2025

SE-3, 07 AUG 2025 to 04 SEP 2025