

ORLANDO, FLORIDA

AL-5793 (FAA)

23334

WAAS CH 45507 W15A	APP CRS 153°	Rwy Idg TDZE Apt Elev 6001 82 82
--	------------------------	--

RNAV (GPS) RWY 15

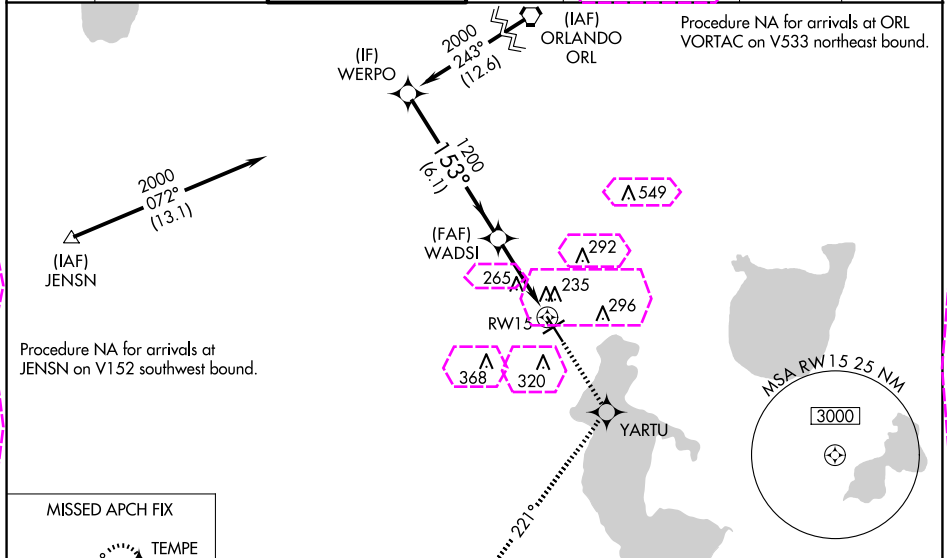
KISSIMEE GATEWAY (ISM)

⚠ For uncompensated Baro-VNAV systems, LNAV/VNAV NA below -15°C (5°F) or above 48°C (118°F). DME/DME RNP-0.3 NA. VDP and Baro-VNAV NA when using Orlando Intl altimeter setting. Inoperative table does not apply to LNAV/VNAV all Cats and LNAV Cat C. When local altimeter setting not received, use Orlando Intl altimeter setting and increase LPV DA all Cats to 309, LNAV/VNAV DA all Cats to 559, and all MDA 40 feet; increase LNAV/VNAV all Cats and Circling Cat C visibility ¼ mile.

MALSF

MISSED APPROACH: Climb to 2200 direct YARTU and on track 221° to TEMPE and hold

ATIS 128.775	ORLANDO APP CON 119.4 351.9	KISSIMEE TOWER ★ 124.45 (CTAF) 0	CLNC DEL 121.7	CLNC DEL 123.95 (when twr closed)	GND CON 121.7	UNICOM 122.95
------------------------	---------------------------------------	---	--------------------------	--	-------------------------	-------------------------



MISSED APCH FIX		ELEV 82		TDZE 82	
Procedure Turn NA		GP 3.00°		TCH 51	
CATEGORY	A	B	C	D	
LPV DA	282-¾		200 (200-¾)		
LNAV/VNAV DA	532-1½		450 (500-1½)		
LNAV MDA	520-¾	438 (500-¾)	520-1¼ 438 (500-1¼)	520-1½ 438 (500-1½)	
CIRCLING	680-1	598 (600-1)	680-1½ 598 (600-1½)	700-2 618 (700-2)	
					REIL Rwy 6, 24 and 33 0 MIRL Rwy 15-33 and 6-24 0

ORLANDO, FLORIDA
Amdt 1A 19MAY22

28°17'N-81°26'W

KISSIMEE GATEWAY (ISM) RNAV (GPS) RWY 15

WAAS CH 45507 W15A	APP CRS 153°	Rwy Ldg TDZE 82 Apt Elev 82	6001
--	------------------------	---	-------------

RNAV (GPS) RWY 15

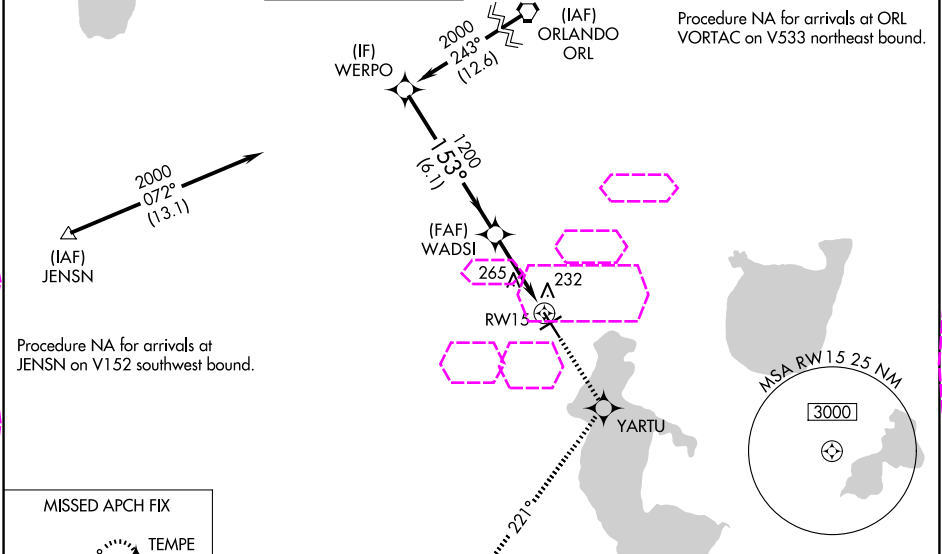
KISSIMEE GATEWAY (ISM)

For uncompensated Baro-VNAV systems, LNAV/VNAV NA below -15°C (5°F) or above 48°C (118°F). DME/DME RNP-0.3 NA. VDP and Baro-VNAV NA when using Orlando Intl altimeter setting. Inoperative table does not apply to LNAV/VNAV all Cats and LNAV Cat C. When local altimeter setting not received, use Orlando Intl altimeter setting and increase LPV DA all Cats to 309, LNAV/VNAV DA all Cats to 559, and all MDA 40 feet; increase LNAV/VNAV all Cats and Circling Cat C visibility ¼ mile.

MALSF

MISSED APPROACH: Climb to 2200 direct YARTU and on track 221° to TEMPE and hold

ATIS 128.775	ORLANDO APP CON 119.4 351.9	KISSIMEE TOWER ★ 124.45 (CTAF)	CLNC DEL 121.7	CLNC DEL 123.95 (When twr closed)	GND CON 121.7	UNICOM 122.95
------------------------	---------------------------------------	--	--------------------------	--	-------------------------	-------------------------



ELEV 82		TDZE 82	
153°		2200 YARTU tr 221° TEMPE	
Procedure Turn NA		*1.2 NM to RW15 *LNAV only.	
GP 3.00° TCH 51		RW15	
6.1 NM		2.1 NM	
1200		1200	
153°		1200	
WERPO		WADSI	
2000		1200	
282-¾		200 (200-¾)	
532-1½		450 (500-1½)	
520-¾		438 (500-¾)	520-1½
438 (500-¾)		520-1¼	438 (500-1¼)
680-1½		598 (600-1½)	700-2
680-1		598 (600-1)	618 (700-2)
REIL Rwy 6, 24 and 33		MIRL Rwy 15-33 and 6-24	