

ORLANDO, FLORIDA

AL-5793 (FAA)

23334

LOC/DME I-ISM 109.75 Chan 34 (Y)	APP CRS 153°	Rwy Idg TDZE Apt Elev	6001 82 82
--	------------------------	-----------------------------	---------------------------------------

ILS or LOC RWY 15

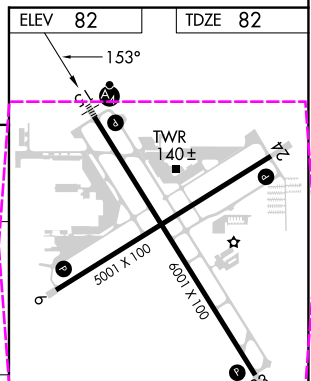
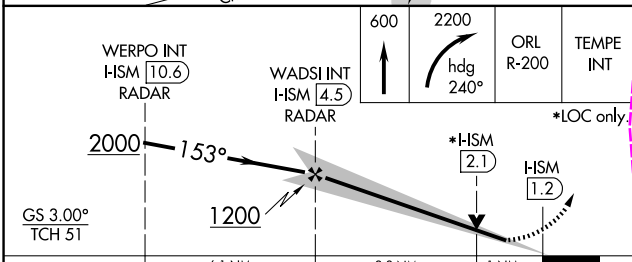
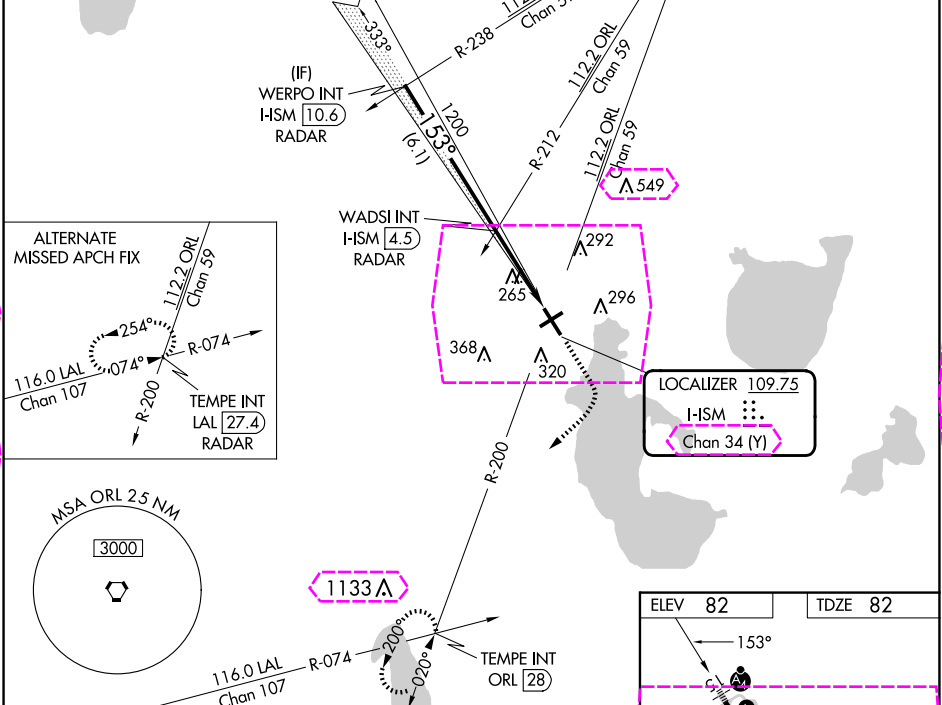
KISSIMEE GATEWAY (ISM)

⚠ VDP NA with Orlando Intl altimeter setting. When local altimeter setting not received, use Orlando Intl altimeter setting and increase all DA to 309 feet, and all MDA 40 feet; increase Circling Cat C visibility 1/4 SM.

MALSF
MISSED APPROACH: Climb to 600 then climbing right turn to 2200 on heading 240° and ORL VORTAC R-200 to TEMPE INT/ORL 28 DME and hold.

ATIS 128.775	ORLANDO APP CON 119.4 351.9	KISSIMEE TOWER ★ 124.45 (CTAF) 0	CLNC DEL 121.7	CLNC DEL 123.95 (when twr closed)	GND CON 121.7	UNICOM 122.95
------------------------	---------------------------------------	---	--------------------------	--	-------------------------	-------------------------

RADAR REQUIRED



CATEGORY	A	B	C	D
S-ILS 15		282-3/4	200 (200-3/4)	
S-LOC 15		440-3/4	358 (400-3/4)	440-1/4 358 (400-1/4)
CIRCLING	680-1	598 (600-1)	680-1 1/2 598 (600-1 1/2)	700-2 618 (700-2)

REIL Rwy 6, 24 and 33	0
MIRL Rwy 15-33 and 6-24	0
FAF to MAP 3.3 NM	
Knots	60 90 120 150 180
Min:Sec	3:18 2:12 1:39 1:19 1:06

ORLANDO, FLORIDA
Amdt 1A 19MAY22

28°17'N-81°26'W

KISSIMEE GATEWAY (ISM)
ILS or LOC RWY 15

SE-3, 10 JUL 2025 to 07 AUG 2025

SE-3, 10 JUL 2025 to 07 AUG 2025

ORLANDO, FLORIDA

AL-5793 (FAA)

25219

LOC/DME I-ISM 109.75 Chan 34 (Y)	APP CRS 153°	Rwy Ldg TDZE Apt Elev	6001 82 82
--	------------------------	-----------------------------	---------------------------------------

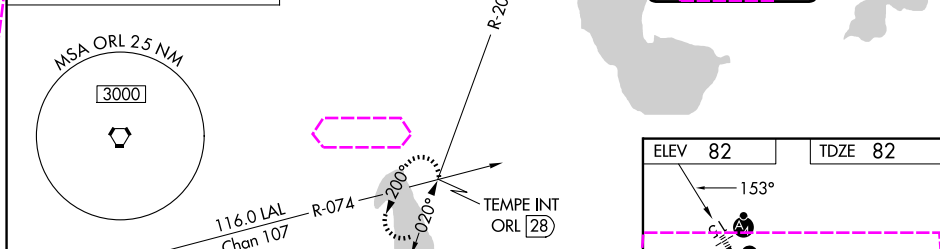
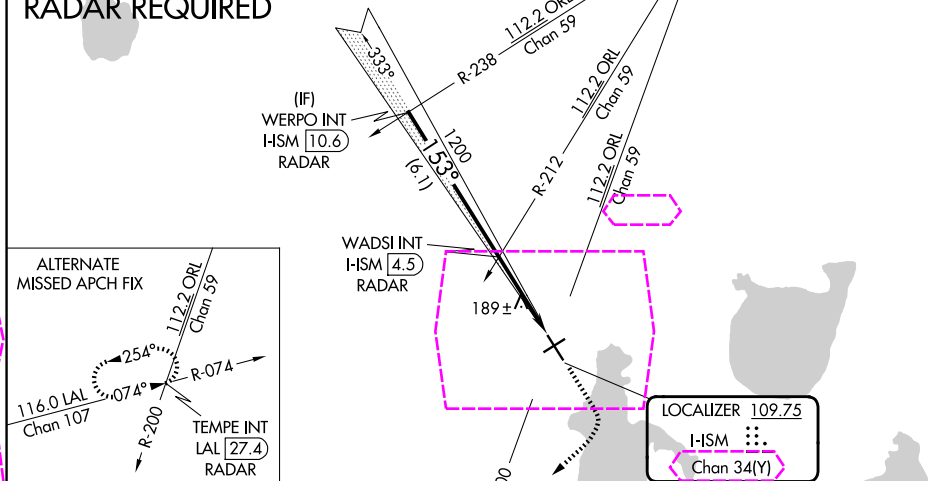
ILS or LOC RWY 15

KISSIMEE GATEWAY (ISM)

⚠ VDP NA with Orlando Intl altimeter setting. When local altimeter setting not received, use Orlando Intl altimeter setting and increase all DA to 309 feet, and all MDA 40 feet; increase Circling Cat C visibility 1/4 SM.	MALSF 	MISSED APPROACH: Climb to 600 then climbing right turn to 2200 on heading 240° and ORL VORTAC R-200 to TEMPE INT/ORL 28 DME and hold.
---	-----------	---

ATIS 128.775	ORLANDO APP CON 119.4 351.9	KISSIMEE TOWER ★ 124.45 (CTAF) 0	CLNC DEL 121.7	CLNC DEL 123.95 (When twr closed)	GND CON 121.7	UNICOM 122.95
------------------------	---------------------------------------	--	--------------------------	--	-------------------------	-------------------------

RADAR REQUIRED



WERPO INT I-ISM 10.6 RADAR	WADSI INT I-ISM 4.5 RADAR	600	2200	ORL R-200	TEMPE INT
2000	153°	1200	hdg 240°	*LOC only	
GS 3.00° TCH 51					
	6.1 NM	2.3 NM	1 NM		
CATEGORY	A	B	C	D	
S-ILS 15		282-3/4	200 (200-3/4)		
S-LOC 15		440-3/4	358 (400-3/4)	440-1/4 358 (400-1/4)	
CIRCLING	680-1	598 (600-1)	680-1 1/2 598 (600-1 1/2)	700-2 618 (700-2)	
					REIL Rwy 6, 24 and 33 0 MIRL Rwy 15-33 and 6-24 0
					FAF to MAP 3.3 NM
					Knots 60 90 120 150 180 Min:Sec 3:18 2:12 1:39 1:19 1:06

ORLANDO, FLORIDA

Amdt 1A 19MAY22

28°17'N-81°26'W

KISSIMEE GATEWAY (ISM)

ILS or LOC RWY 15