

25107

## AIRPORT DIAGRAM

AL-5793 (FAA)

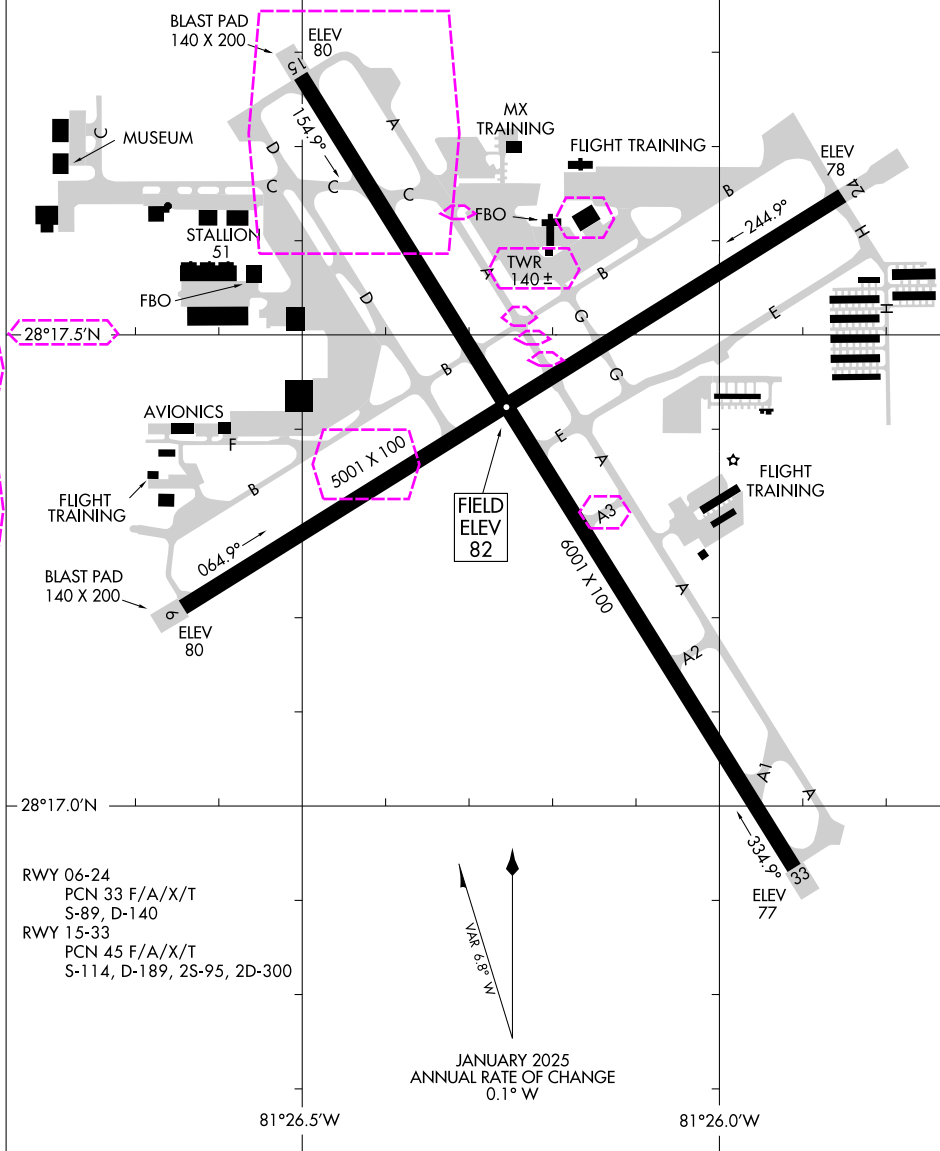
KISSIMMEE GATEWAY (ISM)  
ORLANDO, FLORIDA

ATIS  
128.775  
KISSIMMEE TOWER\*  
124.45  
GND CON  
121.7  
CLNC DEL  
121.7  
123.95 (When Tower Closed)

CAUTION: BE ALERT TO RUNWAY CROSSING CLEARANCES.  
READBACK OF ALL RUNWAY HOLDING INSTRUCTIONS IS REQUIRED.

SE-3, 10 JUL 2025 to 07 AUG 2025

SE-3, 10 JUL 2025 to 07 AUG 2025



## AIRPORT DIAGRAM

25107

ORLANDO, FLORIDA  
KISSIMMEE GATEWAY (ISM)

25219

# AIRPORT DIAGRAM

AL-5793 (FAA)

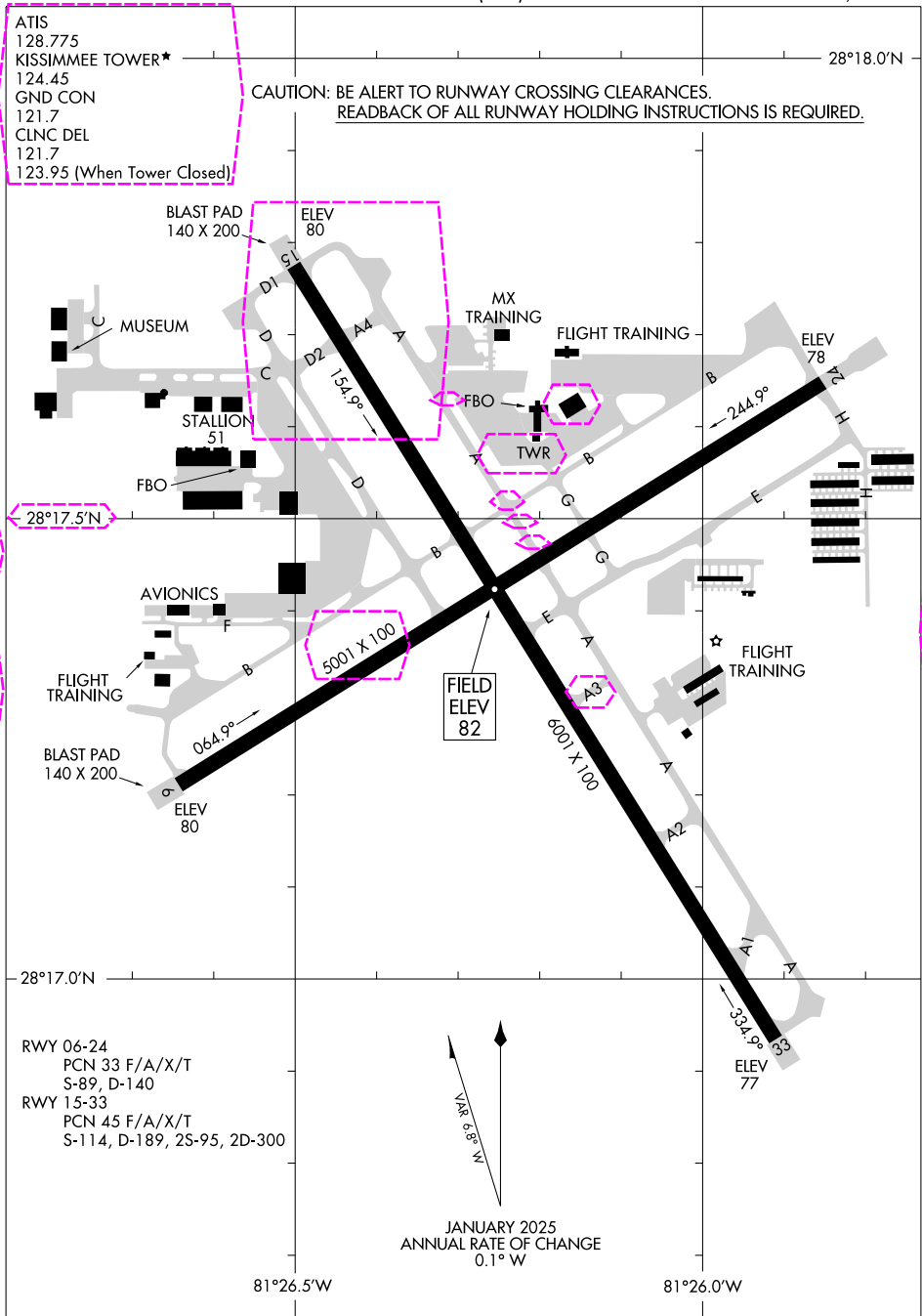
KISSIMMEE GATEWAY (ISM)  
ORLANDO, FLORIDA

ATIS  
128.775  
KISSIMMEE TOWER\*  
124.45  
GND CON  
121.7  
CLNC DEL  
121.7  
123.95 (When Tower Closed)

CAUTION: BE ALERT TO RUNWAY CROSSING CLEARANCES.  
READBACK OF ALL RUNWAY HOLDING INSTRUCTIONS IS REQUIRED.

SE-3, 07 AUG 2025 to 04 SEP 2025

SE-3, 07 AUG 2025 to 04 SEP 2025



# AIRPORT DIAGRAM

25219

ORLANDO, FLORIDA  
KISSIMMEE GATEWAY (ISM)