

OXFORD, CONNECTICUT

AL-5785 (FAA)

24305

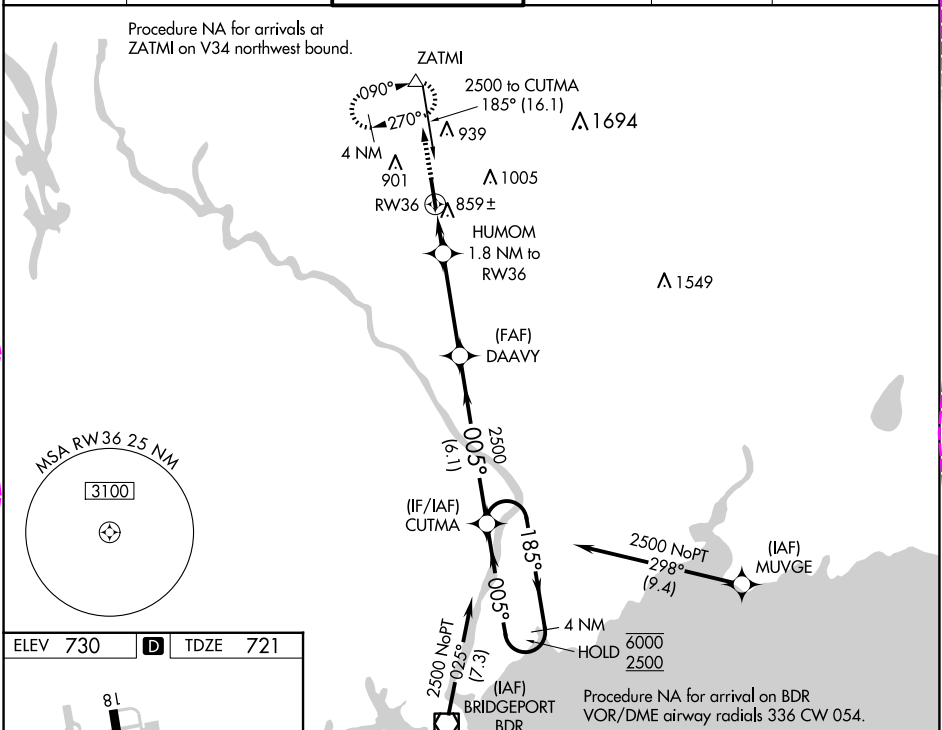
WAAS CH 72922 W36A	APP CRS 005°	Rwy Idg 5301 TDZE 721 Apt Elev 730
--	------------------------	---

RNAV (GPS) RWY 36

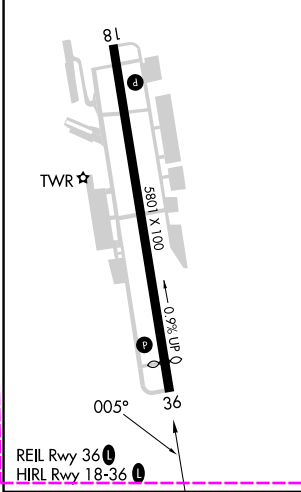
WATERBURY-OXFORD (OXC)

RNP APCH.	MISSED APPROACH: Climb to 3000 direct ZATMI and hold, continue climb-in-hold to 3000.
▼ Rwy 36 helicopter visibility reduction below 3/4 SM NA. ▲ For uncompensated Baro-VNAV systems, LNAV/VNAV NA below -16°C or above 54°C.	

ATIS 132.975	NEW YORK APP CON 124.075 343.65	OXFORD TOWER ★ 118.475 (CTAF) 0	GND CON 121.65	CLNC DEL 121.65	UNICOM 122.95
------------------------	---	---	--------------------------	---------------------------	-------------------------



ELEV 730	D	TDZE 721
----------	----------	----------



3000	ZATMI	*LNAV only	HUMOM 1.8 NM to RW36	DAAVY 2500	CUTMA 4 NM Holding Pattern
*1.2 NM to RW36					
*1300					
1.2 0.6 NM 3.7 NM 6.1 NM					
CATEGORY	A	B	C	D	
LPV DA	971-3/4 250 (300-3/4)				
LNAV/VNAV DA	1097-1 376 (400-1)				
LNAV MDA	1120-1 399 (400-1)		1120-1 3/8 399 (400-1 3/8)		
CIRCLING	1300-1 570 (600-1)		1380-1 3/4 650 (700-1 3/4)		1460-2 1/4 730 (800-2 1/4)

OXFORD, CONNECTICUT
Amdt 3, 03JAN19

41°29'N-73°08'W

WATERBURY-OXFORD (OXC) RNAV (GPS) RWY 36

NE-1, 10 JUL 2025 to 07 AUG 2025

NE-1, 10 JUL 2025 to 07 AUG 2025

OXFORD, CONNECTICUT

AL-5785 (FAA)

25219

WAAS CH 72922 W36A	APP CRS 005°	Rwy Ldg 5301 TDZE 721 Apt Elev 730
--	------------------------	---

RNAV (GPS) RWY 36

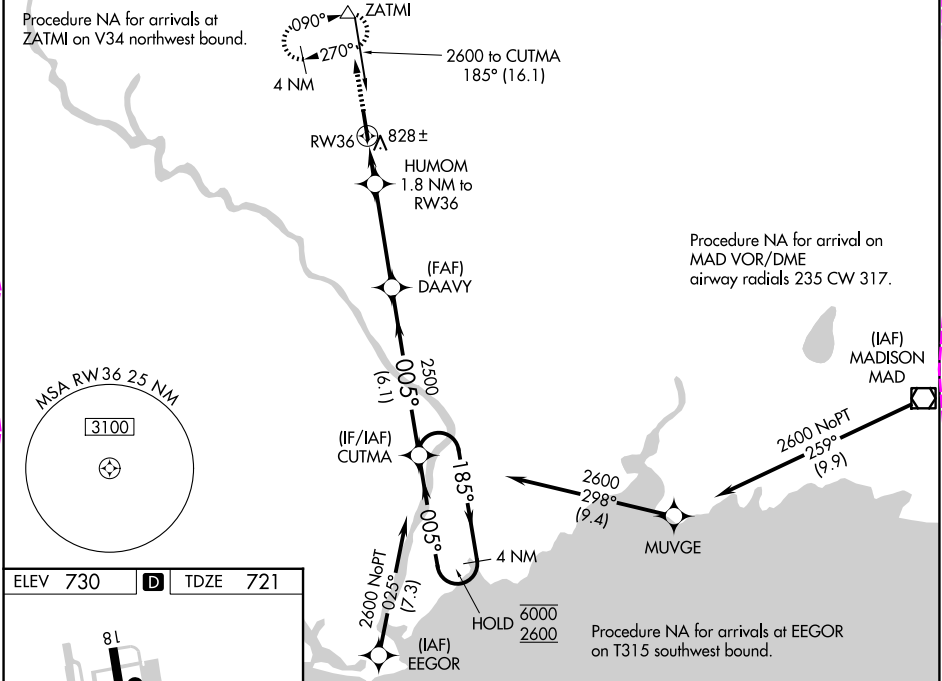
WATERBURY-OXFORD (OXC)

RNP APCH - GPS.

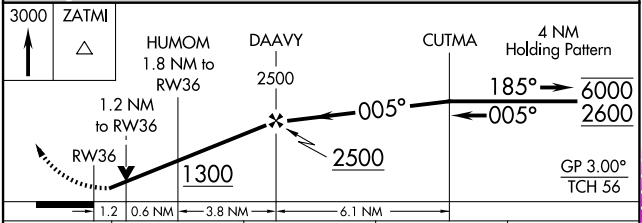
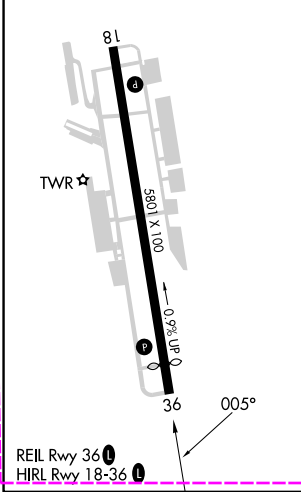
⚠ Rwy 36 helicopter visibility reduction below 3/4 SM NA. For uncompensated Baro-VNAV systems, LNAV/VNAV NA below -17°C or above 54°C. Baro-VNAV and VDP NA when using DXR altimeter setting. When local altimeter setting not received, use DXR altimeter setting: increase LPV DA to 1049 feet and all visibilities 1/4 SM; increase LNAV/VNAV DA to 1175 feet and all visibilities 3/8 SM; increase all MDAs 80 feet and LNAV visibility Cats C and D 1/8 SM, and Circling visibility Cats C and D 1/4 SM.

MISSED APPROACH:
Climb to 3000 direct ZATMI and hold, continue climb-in-hold to 3000.

ATIS 132.975	NEW YORK APP CON 124.075 343.65	OXFORD TOWER ★ 118.475 (CTAF) 0	GND CON 121.65	CLNC DEL 121.65	CLNC DEL 135.1 (When twr closed)	UNICOM 122.95
------------------------	---	---	--------------------------	---------------------------	---	-------------------------



ELEV 730	D	TDZE 721
-----------------	----------	-----------------



CATEGORY	A	B	C	D
LPV DA		971-3/4	250 (300-3/4)	
LNAV/VNAV DA		1097-1	376 (400-1)	
LNAV MDA	1120-1	399 (400-1)	1120-1 1/8	399 (400-1 1/8)
CIRCLING	1360-1	630 (700-1)	1380-1 3/4	1460-2 1/4

OXFORD, CONNECTICUT
Amdt 4, 07AUG25

41°29'N-73°08'W

WATERBURY-OXFORD (OXC) RNAV (GPS) RWY 36

NE-1, 07 AUG 2025 to 04 SEP 2025

NE-1, 07 AUG 2025 to 04 SEP 2025