

WAAS CH 42901 W18A	APP CRS 185°	Rwy Idg 5801 TDZE 730 Apt Elev 730
--	------------------------	---

RNAV (GPS) RWY 18
WATERBURY-OXFORD (OXC)

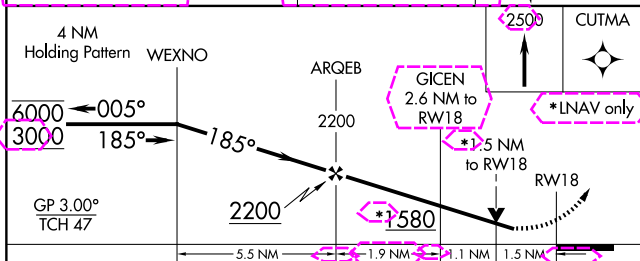
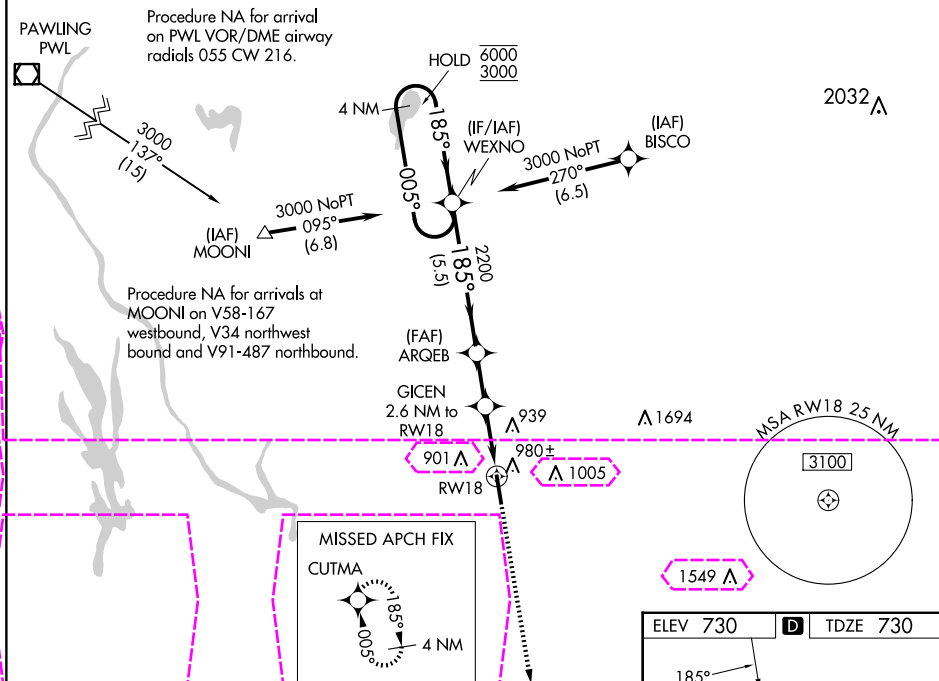
RNP APCH.

T Rwy 18 helicopter visibility reduction below $\frac{3}{4}$ SM NA.

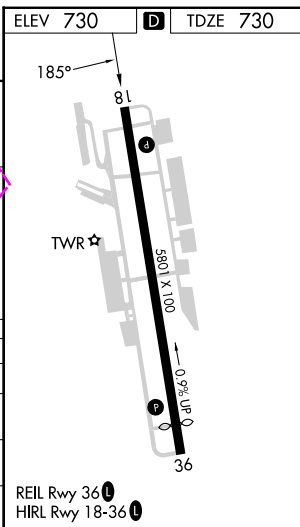
A For uncompensated Baro-VNAV systems, LNAV/VNAV NA below -16°C or above 54°C.

MISSED APPROACH: Climb to 2500 direct CUTMA and hold.

ATIS 132.975	NEW YORK APP CON 124.075 343.65	OXFORD TOWER ★ 118.475 (CTAF) 0	GND CON 121.65	CLNC DEL 121.65	UNICOM 122.95
------------------------	---	---	--------------------------	---------------------------	-------------------------



CATEGORY	A	B	C	D
LPV DA		1140-1 $\frac{1}{8}$	410 (500-1 $\frac{1}{8}$)	
RNAV/ VNAV DA		1141-1 $\frac{1}{8}$	411 (500-1 $\frac{1}{8}$)	
RNAV MDA	1240-1	510 (600-1)	1240-1 $\frac{3}{8}$	510 (600-1 $\frac{3}{8}$)
C CIRCLING	1300-1	570 (600-1)	1380-1 $\frac{3}{4}$ 650 (700-1 $\frac{3}{4}$)	1460-2 $\frac{1}{4}$ 730 (800-2 $\frac{1}{4}$)



OXFORD, CONNECTICUT
Amdt 3 03JAN19

41°29'N-73°08'W

WATERBURY-OXFORD (OXC)
RNAV (GPS) RWY 18

OXFORD, CONNECTICUT

AL-5785 (FAA)

25219

WAAS CH 42901 W18A	APP CRS 185°	Rwy Ldg TDZE 730 Apt Elev 730
--	------------------------	---

RNAV (GPS) RWY 18

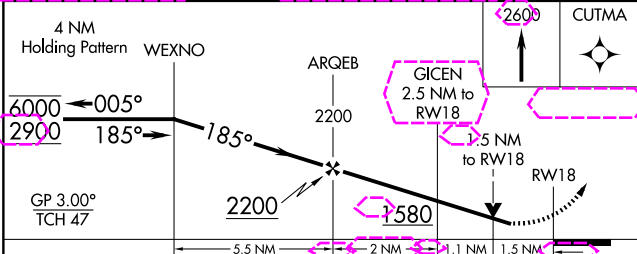
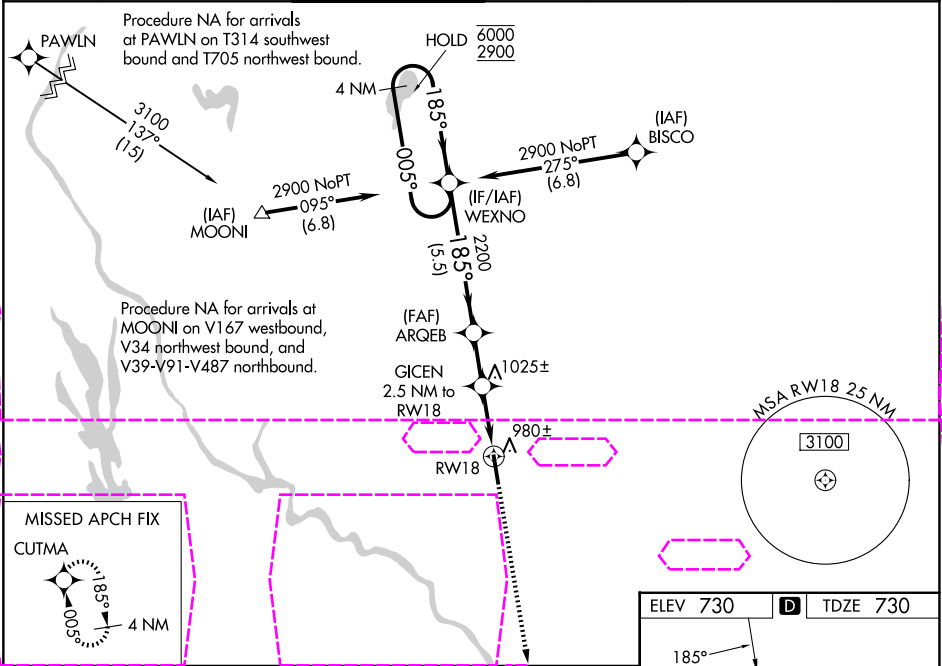
WATERBURY-OXFORD (OXC)

RNP APCH - GPS.

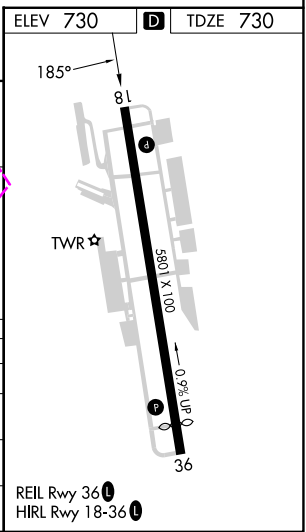
▼ Rwy 18 helicopter visibility reduction below $\frac{3}{4}$ SM NA. For uncompensated Baro-VNAV systems, LNAV/VNAV NA below -17°C or above 54°C. Baro-VNAV and VDP NA when using DXR altimeter setting. When local altimeter setting not received, use DXR altimeter setting: increase LPV DA to 1218 feet and all visibilities $\frac{1}{4}$ SM; increase LNAV/VNAV DA to 1219 feet and all visibilities $\frac{1}{4}$ SM; increase all MDAs 80 feet and LNAV visibility Cat C and D $\frac{3}{4}$ SM, and Circling visibility Cat C and D $\frac{1}{4}$ SM.

MISSED APPROACH:
Climb to 2600 direct CUTMA and hold.

ATIS 132.975	NEW YORK APP CON 124.075 343.65	OXFORD TOWER ★ 118.475 (CTAF) 0	GND CON 121.65	CLNC DEL 121.65	CLNC DEL 135.1 (When twr closed)	UNICOM 122.95
------------------------	---	--	--------------------------	---------------------------	---	-------------------------



CATEGORY	A	B	C	D
LPV DA		1140-1 $\frac{1}{8}$	410 (500-1 $\frac{1}{8}$)	
LNAV/VNAV DA		1141-1 $\frac{1}{8}$	411 (500-1 $\frac{1}{8}$)	
LNAV MDA	1240-1	510 (600-1)	1240-1 $\frac{3}{8}$	510 (600-1 $\frac{3}{8}$)
CIRCLING	1360-1	630 (700-1)	1380-1 $\frac{3}{4}$ 650 (700-1 $\frac{3}{4}$)	1460-2 $\frac{1}{4}$ 730 (800-2 $\frac{1}{4}$)



OXFORD, CONNECTICUT
Amet 4, 07AUG25

41°29'N-73°08'W

WATERBURY-OXFORD (OXC)

RNAV (GPS) RWY 18