

OXFORD, CONNECTICUT

AL-5785 (FAA)

24305

LOC/DME I- OX C	APP CRS	Rwy ldg
109.55	005°	5301
Chan 32 (Y)		TDZE 721
		Apt Elev 730

ILS or LOC RWY 36

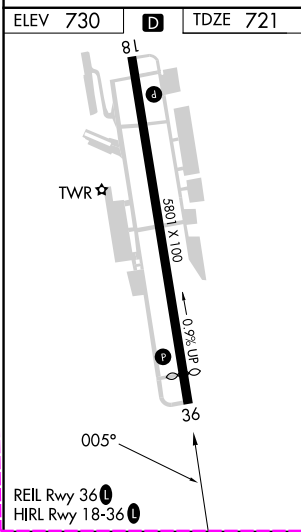
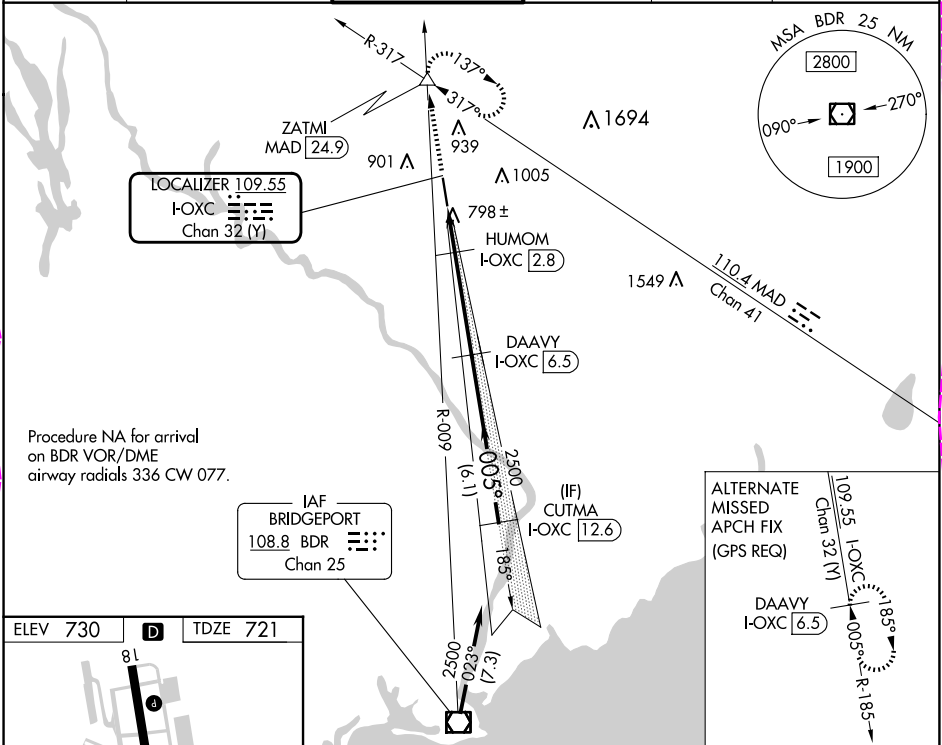
WATERBURY-OXFORD (OXC)

DME required.

NA Rwy 36 helicopter visibility reduction below ¾ SM NA.

MISSED APPROACH: Climb to 3000 on heading 005° and MAD VOR/DME R-317 to ZATMI INT/MAD 24.9 DME and hold. Continue climb-in-hold to 3000.

ATIS	NEW YORK APP CON	OXFORD TOWER ★	GND CON	CLNC DEL	UNICOM
132.975	124.075 343.65	118.475 (CTAF) 0	121.65	121.65	122.95



3000	ZATMI	DAAVY I- OX C 6.5	CUTMA I- OX C 12.6
hdg 005°	MAD R-317	HUMOM I- OX C 2.8	2500
*LOC only.	*I- OX C 2.2	2500	GS unusable below 965 MSL.
		1220	GS 3.00° TCH 56
	1.3 NM	0.5 NM	3.7 NM
CATEGORY	A	B	C
S-ILS 36	971-¾	250 (300-¾)	
S-LOC 36	1140-1	419 (500-1)	1140-1½ 419 (500-1½)
CIRCLING	1300-1	570 (600-1)	1380-1¾ 650 (700-1¾) 1460-2¼ 730 (800-2¼)

OXFORD, CONNECTICUT
Amdt 15 03JAN19

41°29'N-73°08'W

WATERBURY-OXFORD (OXC)
ILS or LOC RWY 36

NE-1, 10 JUL 2025 to 07 AUG 2025

NE-1, 10 JUL 2025 to 07 AUG 2025

LOC/DME I-OC <u>109.55</u> Chan 32 (Y)	APP CRS 005°	Rwy Ldg 5301 TDZE 721 Apt Elev 730
---	------------------------	---

ILS or LOC RWY 36
WATERBURY-OXFORD (OXC)

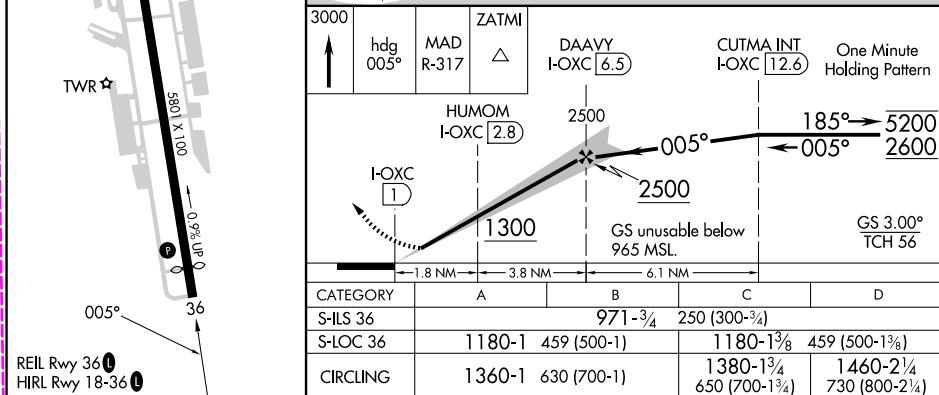
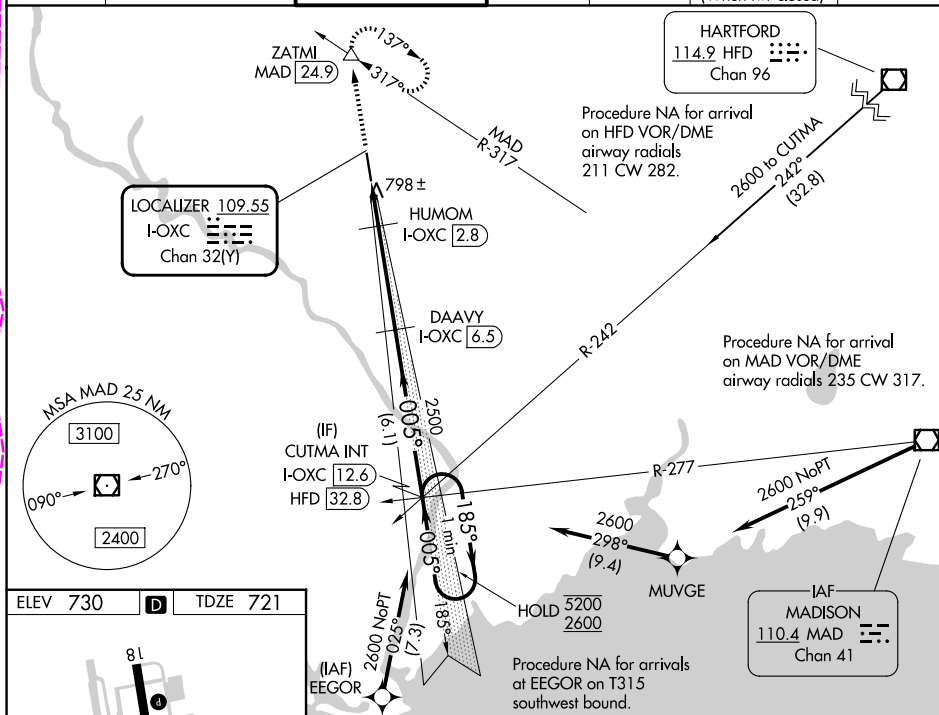
RNP APCH - GPS. From EEGOR or MAD VOR/DME.

DME required.

T Rwy 36 helicopter visibility reduction below $\frac{3}{4}$ SM NA. When local weather not received, use DXR altimeter setting: increase S-ILS 35 DA to 1049 and all Cts visibilities $\frac{1}{4}$ SM; increase all MDAs 80 feet and S-LOC 36 visibility Cat C and D $\frac{1}{8}$ SM, and Circling visibility Cat C and D $\frac{1}{4}$ SM.

MISSED APPROACH: Climb to 3000 on heading 005° and MAD VOR/DME R-317 to ZATMI/MAD 24.9 DME and hold, continue climb-in-hold to 3000.

ATIS 132.975	NEW YORK APP CON 124.075 343.65	OXFORD TOWER ★ 118.475 (CTAF) 0	GND CON 121.65	CLNC DEL 121.65	CLNC DEL 135.1 (When twr closed)	UNICOM 122.95
------------------------	---	--	--------------------------	---------------------------	---	-------------------------



OXFORD, CONNECTICUT

Amdt 16 07AUG25

41°29'N-73°08'W

WATERBURY-OXFORD (OXC)
ILS or LOC RWY 36