

NORTHAMPTON, MASSACHUSETTS

AL-5784 (FAA)

25163

VORTAC BAF <b>113.0</b> Chan <b>77</b>	APP CRS <b>219°</b>	Rwy Ldg TDZE Apt Elev <b>N/A</b> <b>N/A</b> <b>121</b>
--	------------------------	---

**VOR/DME-B**  
NORTHAMPTON (7B2)

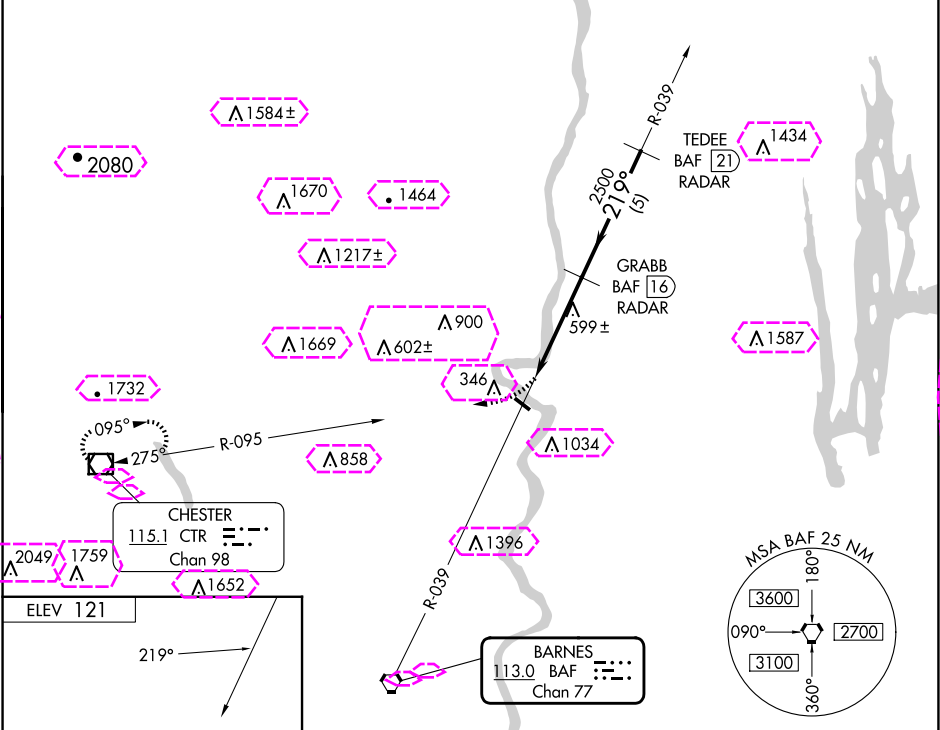
<b>NA</b> -24°C	Obtain local altimeter on CTAF; when not received, use Windsor Locks altimeter setting.	MISSED APPROACH: Climbing right turn to 4000 via CTR R-095 to CTR VOR/DME and hold.
--------------------	---	---

**BRADLEY APP CON**  
**125.35 281.5**

CLNC DEL  
**133.6**

UNICOM  
**122.7 (CTAF) 0**

**RADAR REQUIRED**



ELEV 121	219°	3335 X-30	4000 CTR R-095	BAF 12	GRABB BAF 16 RADAR	TEDEE BAF 21 RADAR
1 NM	4 NM	5 NM	3000	2500	3000	
CATEGORY	A	B	C	D		
CIRCLING	1300-1¼ 1179 (1200-1¼)	1400-1½ 1279 (1300-1½)	NA			
WINDSOR LOCKS ALTIMETER SETTING MINIMUMS						
CIRCLING	1360-1¼ 1239 (1300-1¼)	1460-1½ 1339 (1400-1½)	NA			

NORTHAMPTON, MASSACHUSETTS  
Amdt 5B 22APR21

42°20'N-72°37'W

NORTHAMPTON (7B2)  
**VOR/DME-B**

NE-1, 10 JUL 2025 to 07 AUG 2025

NE-1, 10 JUL 2025 to 07 AUG 2025

NORTHAMPTON, MASSACHUSETTS

AL-5784 (FAA)

25219

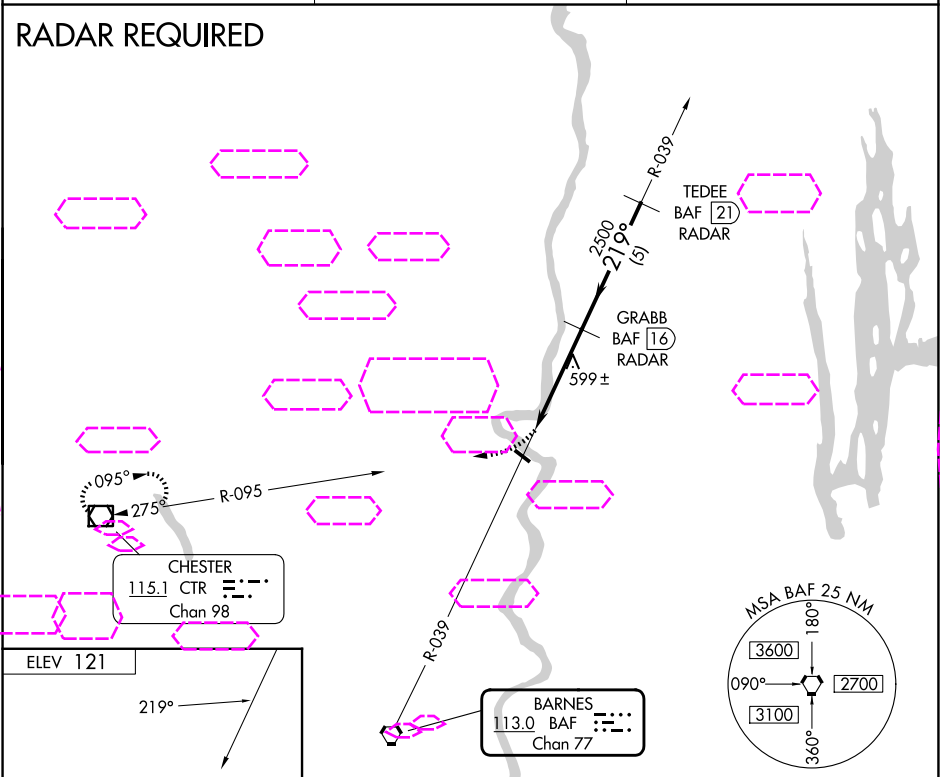
VORTAC BAF	APP CRS	Rwy Ldg TDZE	N/A
113.0	219°		N/A
Chan 77		Apt Elev	121

VOR/DME-B  
NORTHAMPTON (7B2)

NA -24°C	Obtain local altimeter on CTAF; when not received, use Windsor Locks altimeter setting.	MISSED APPROACH: Climbing right turn to 4000 via CTR R-095 to CTR VOR/DME and hold.
-------------	---	---

YANKEE APP CON 125.35 281.5	CLNC DEL 133.6	UNICOM 122.7 (CTAF)
--------------------------------	-------------------	------------------------

RADAR REQUIRED



ELEV 121	219°	4000 CTR R-095	BAF 12	GRABB BAF 16 RADAR	TEDEE BAF 21 RADAR
CATEGORY	A	B	C	D	
CIRCLING	1300-1¼ 1179 (1200-1¼)	1400-1½ 1279 (1300-1½)	NA		
WINDSOR LOCKS ALTIMETER SETTING MINIMUMS					
CIRCLING	1360-1¼ 1239 (1300-1¼)	1460-1½ 1339 (1400-1½)	NA		

MIRL Rwy 14-32

NORTHAMPTON, MASSACHUSETTS  
Amdt 5B 22APR21

42°20'N-72°37'W

NORTHAMPTON (7B2)  
VOR/DME-B

NE-1, 07 AUG 2025 to 04 SEP 2025

NE-1, 07 AUG 2025 to 04 SEP 2025