

NORTHAMPTON, MASSACHUSETTS

AL-5784 (FAA)

25163

APP CRS	Rwy Ldg	3335
143°	TDZE	121
	Apt Elev	121

# RNAV (GPS) RWY 14

NORTHAMPTON (7B2)

RNP APCH - GPS.

▼

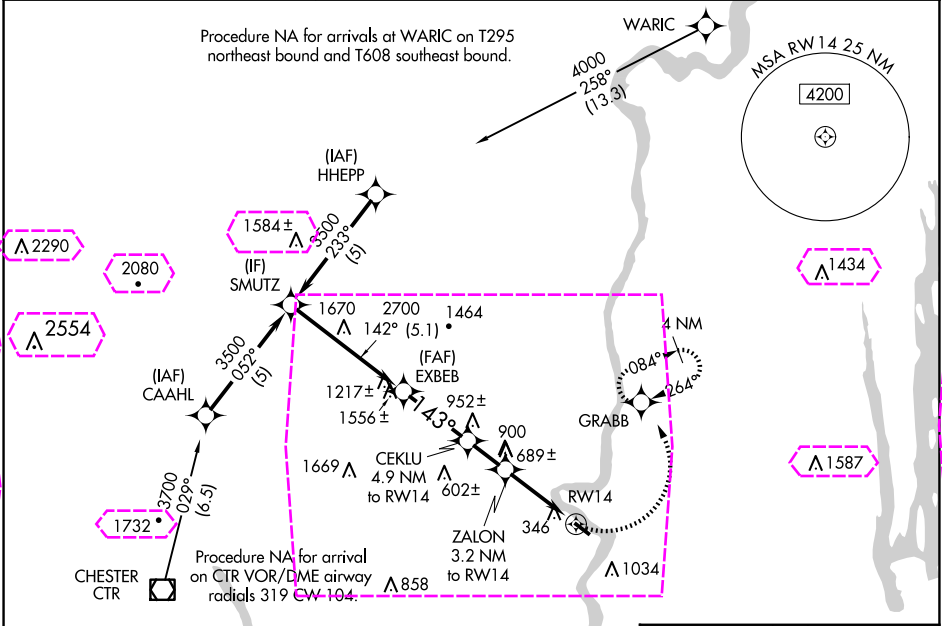
▲ NA

❄ -24°C

Procedure NA at night. Obtain local altimeter setting on CTAF; when not received, use Windsor Locks altimeter setting. Rwy 14 helicopter visibility reduction below 1 SM NA.

MISSED APPROACH: Climbing left turn to 3000 direct GRABB and hold, continue climb-in-hold to 3000.

BRADLEY APP CON 125.35 281.5	CLNC DEL 133.6	UNICOM 122.7 (CTAF) 0
---------------------------------	-------------------	--------------------------



VGSI and descent angles not coincident (VGSI Angle 4.50/TCH 60).  
\* 1820 when using Windsor Locks altimeter setting.  
\*\* 1260 when using Windsor Locks altimeter setting.

3000

GRABB

SMUTZ

EXBEB

CEKLU 4.9 NM to RW14

ZALON 3.2 NM to RW14

RW14

3500

2700

1740

1180

142°

143°

3.07° TCH 40

5.1 NM

2.9 NM

1.7 NM

3.2

CATEGORY	A	B	C	D
RNAV MDA	940-1 819 (900-1)	940-1¼ 819 (900-1¼)	NA	NA
CIRCLING	940-1¼ 819 (900-1¼)	1400-1½ 1279 (1300-1½)	NA	NA
WINDSOR LOCKS ALTIMETER SETTING MINIMUMS				
RNAV MDA	1020-1¼ 899 (900-1¼)	899 (900-1¼)	NA	NA
CIRCLING	1020-1¼ 899 (900-1¼)	1460-1½ 1339 (1400-1½)	NA	NA

MIRL Rwy 14-32 0

NORTHAMPTON, MASSACHUSETTS

AL-5784 (FAA)

25219

APP CRS	Rwy Ldg	3335
143°	TDZE	121
	Apt Elev	121

# RNAV (GPS) RWY 14

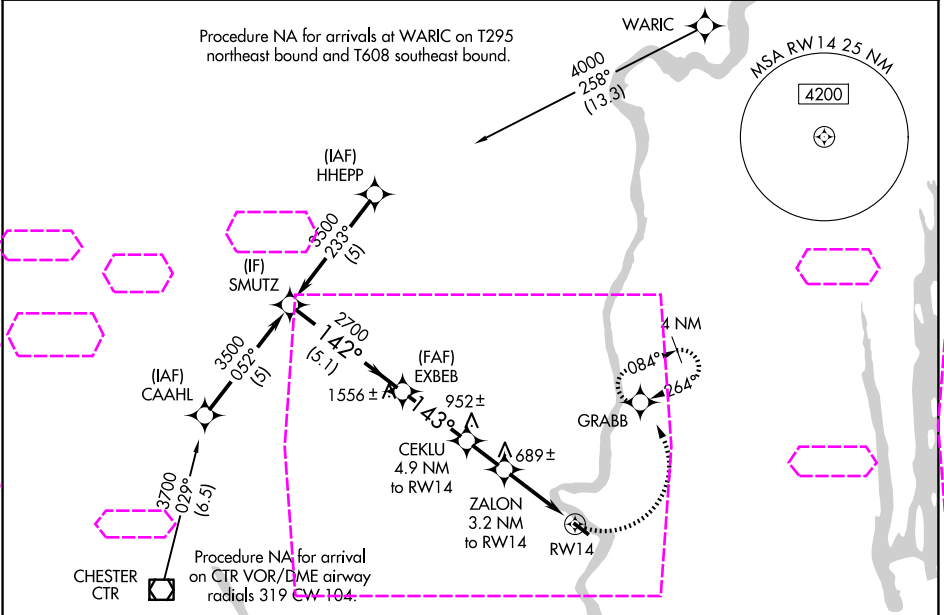
NORTHAMPTON (7B2)

RNP APCH - GPS.	
<div><div>▼</div><div>NA</div><div>-24°C</div></div> <div>Procedure NA at night. Obtain local altimeter setting on CTAF; when not received, use Windsor Locks altimeter setting. Rwy 14 helicopter visibility reduction below 1 SM NA.</div>	MISSED APPROACH: Climbing left turn to 3000 direct GRABB and hold, continue climb-in-hold to 3000.

YANKEE APP CON  
125.35 281.5

CLNC DEL  
133.6

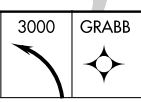
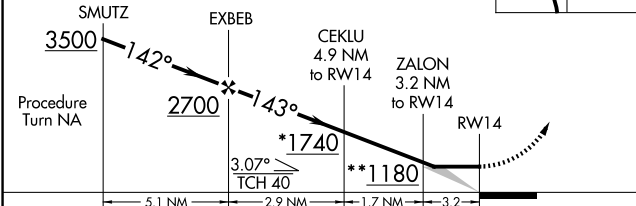
UNICOM  
122.7 (CTAF) 0



NE-1, 07 AUG 2025 to 04 SEP 2025

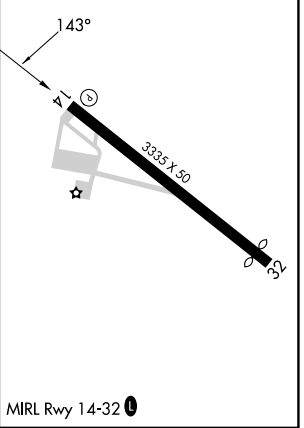
NE-1, 07 AUG 2025 to 04 SEP 2025

VGSI and descent angles not coincident (VGSI Angle 4.50/TCH 60).  
\* 1820 when using Windsor Locks altimeter setting.  
\*\* 1260 when using Windsor Locks altimeter setting.



ELEV 121	TDZE 121
----------	----------

CATEGORY	A	B	C	D
RNAV MDA	940-1 819 (900-1)	940-1¼ 819 (900-1¼)		NA
CIRCLING	940-1¼ 819 (900-1¼)	1400-1½ 1279 (1300-1½)		NA
WINDSOR LOCKS ALTIMETER SETTING MINIMUMS				
RNAV MDA	1020-1¼	899 (900-1¼)		NA
CIRCLING	1020-1¼ 899 (900-1¼)	1460-1½ 1339 (1400-1½)		NA



NORTHAMPTON, MASSACHUSETTS

Orig-C 07SEP23

42°20'N-72°37'W

NORTHAMPTON (7B2)

# RNAV (GPS) RWY 14