

DEADHORSE, ALASKA

AL-5776 (FAA)

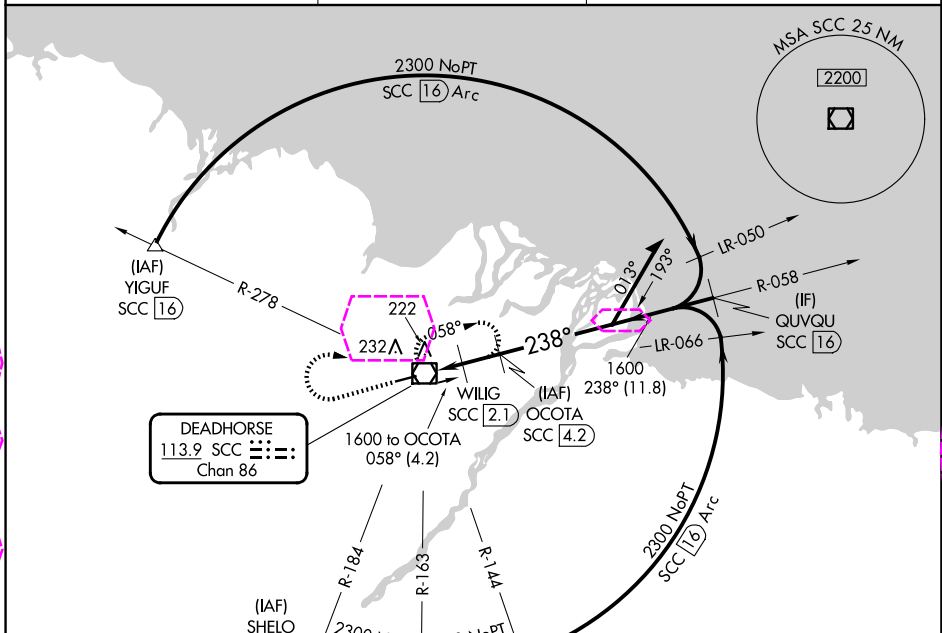
24081

VOR/DME SCC	APP CRS	Rwy Idg
113.9	238°	6500
Chan 86		TDZE 66
		Apt Elev 67

VOR Z RWY 24
DEADHORSE (SCC) (PASC)

V DME required. For inop ALS, increase Cats C/D/E visibility to RVR 6000.	MALSR 	MISSED APPROACH: Climb to 1500 then climbing right turn to 2000 direct SCC VOR/DME and hold, continue climb-in-hold to 2000.
---	-----------	--

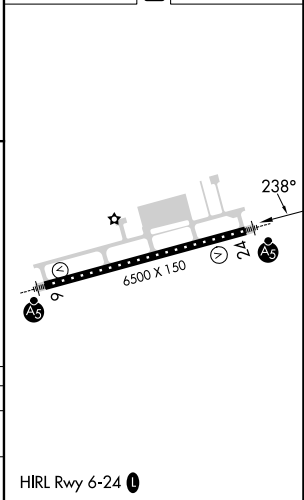
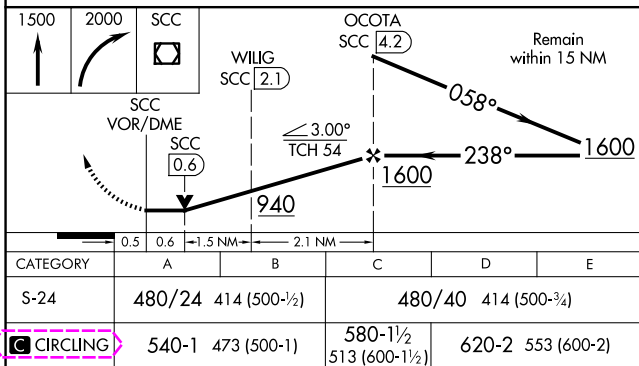
AFIS 118.4	ANCHORAGE CENTER 134.4 370.9	DEADHORSE RADIO 123.6 (CTAF) 0
---------------	---------------------------------	-----------------------------------



DEADHORSE
113.9 SCC
Chan 86

ELEV 67	TDZE 66
---------	---------

DME REQUIRED



DEADHORSE, ALASKA
Amdt 5 12OCT17

70°12'N-148°28'W

DEADHORSE (SCC) (PASC)
VOR Z RWY 24

AK, 12 JUN 2025 to 07 AUG 2025

AK, 12 JUN 2025 to 07 AUG 2025

DEADHORSE, ALASKA

AL-5776 (FAA)

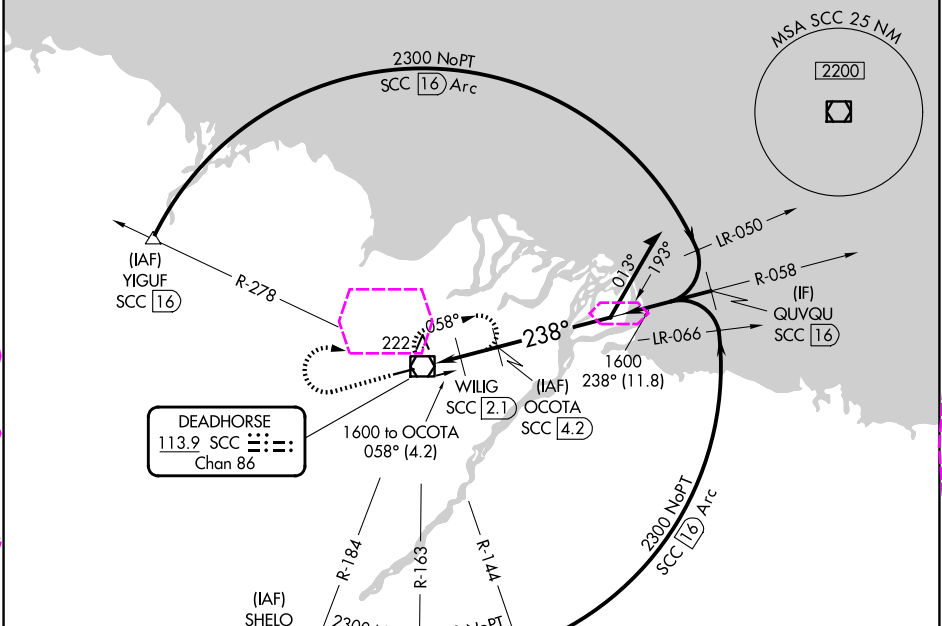
25219

VOR/DME SCC	APP CRS	Rwy Ldg
113.9	238°	6500
Chan 86		TDZE 66
		Apt Elev 67

VOR Z RWY 24
DEADHORSE (SCC) (PASC)

V DME required. For inop ALS, increase Cats C/D/E visibility to RVR 6000.	MALSR 	MISSED APPROACH: Climb to 1500 then climbing right turn to 2000 direct SCC VOR/DME and hold, continue climb-in-hold to 2000.
---	-----------	--

AFIS★ 118.4	ANCHORAGE CENTER 134.4 370.9	DEADHORSE RADIO 123.6 (CTAF) 0
----------------	---------------------------------	-----------------------------------



DEADHORSE
113.9 SCC
Chan 86

DME REQUIRED

