



DEADHORSE, ALASKA

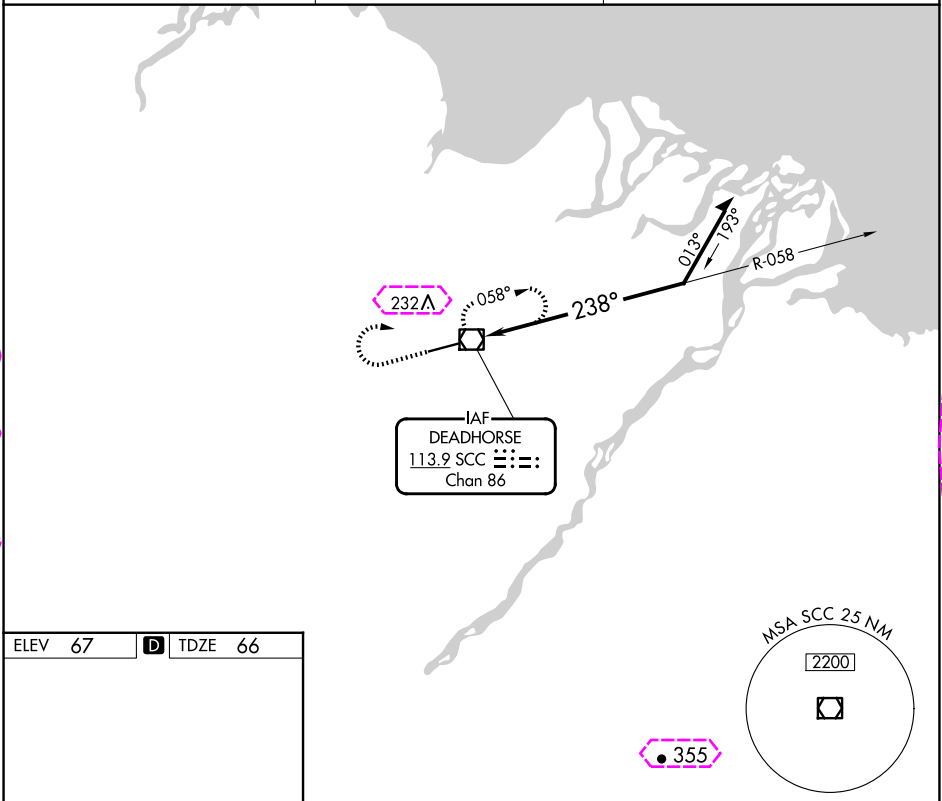
AL-5776 (FAA)

24081

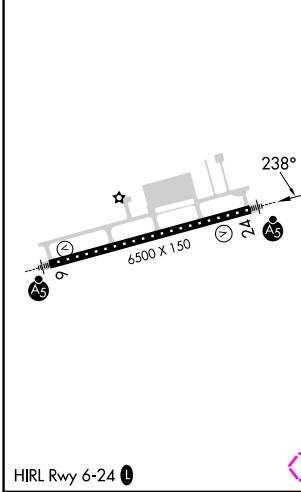
VOR/DME SCC	APP CRS	Rwy Idg	6500
113.9	238°	TDZE	66
Chan 86		Apt Elev	67

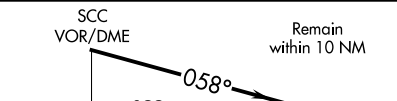

VOR Y RWY 24
DEADHORSE (SCC) (PASC)

		MISSED APPROACH: Climb to 1500 then climbing right turn to 2000 direct SCC VOR/DME and hold, continue climb-in-hold to 2000.
AFIS 118.4	ANCHORAGE CENTER 134.4 370.9	DEADHORSE RADIO 123.6 (CTAF) 0



ELEV 67	D	TDZE 66
---------	---	---------



1500	2000	SCC				
CATEGORY	A		B		C	D
S-24	580/24 514 (600-½)		580/55		514 (600-1)	
 CIRCLING	580-1 513 (600-1)		580-1½ 513 (600-1½)		620-2 553 (600-2)	

DEADHORSE, ALASKA
Amdt 6B 12OCT17

70°12'N-148°28'W

DEADHORSE (SCC) (PASC)
VOR Y RWY 24

AK, 12 JUN 2025 to 07 AUG 2025

AK, 12 JUN 2025 to 07 AUG 2025


DEADHORSE, ALASKA

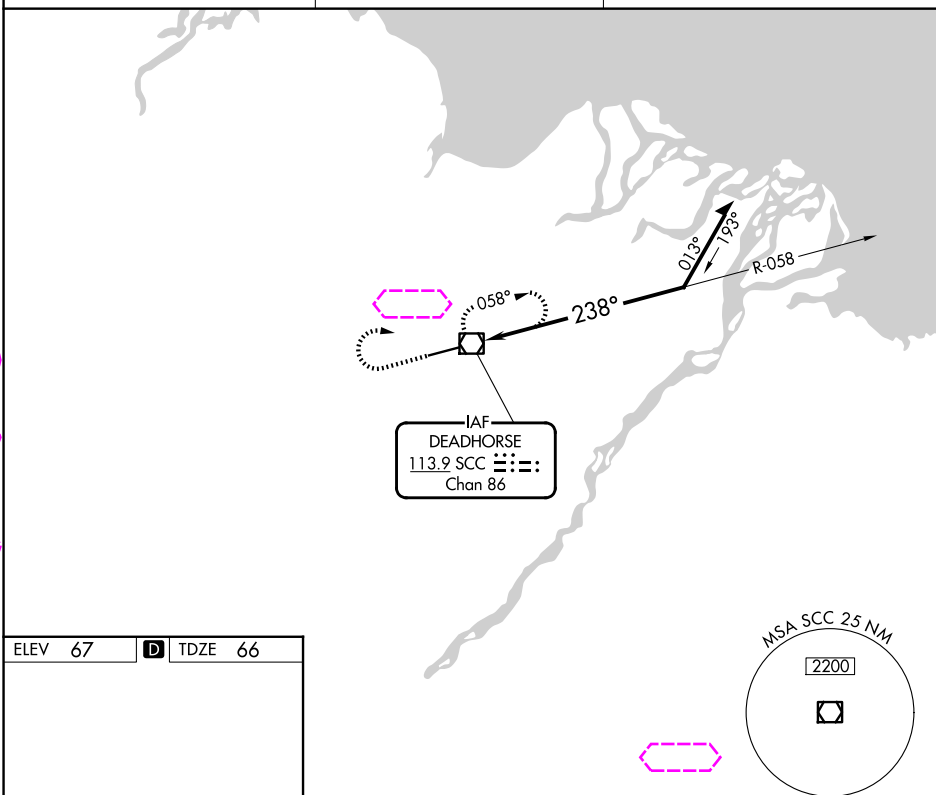
AL-5776 (FAA)

25219

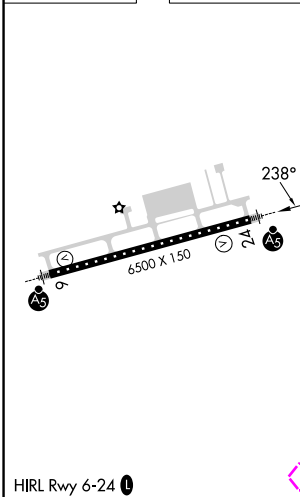
VOR/DME SCC	APP CRS	Rwy Ldg	6500
<u>113.9</u>	<u>238°</u>	TDZE	66
Chan <u>86</u>		Apt Elev	67

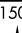
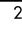

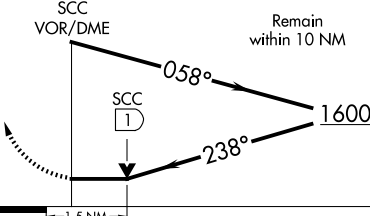
VOR Y RWY 24
DEADHORSE (SCC) (PASC)

V	MALSR 	MISSED APPROACH: Climb to 1500 then climbing right turn to 2000 direct SCC VOR/DME and hold, continue climb-in-hold to 2000.
AFIS ★ 118.4	ANCHORAGE CENTER 134.4 370.9	DEADHORSE RADIO 123.6 (CTAF) 0



ELEV 67	D	TDZE 66
---------	----------	---------



1500	2000	SCC				
						
						
CATEGORY	A	B	C	D		
S-24	580/24	514 (600-½)	580/55	514 (600-1)		
CIRCLING	580-1	513 (600-1)	580-1½ 513 (600-1½)	620-2 553 (600-2)		

DEADHORSE, ALASKA
Amdt 6B 12OCT17

70°12'N-148°28'W

DEADHORSE (SCC) (PASC)
VOR Y RWY 24

AK, 07 AUG 2025 to 02 OCT 2025