

DEADHORSE, ALASKA


AL-5776 (FAA)

21168

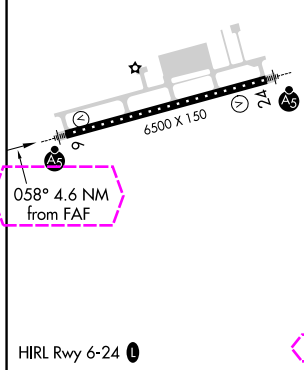
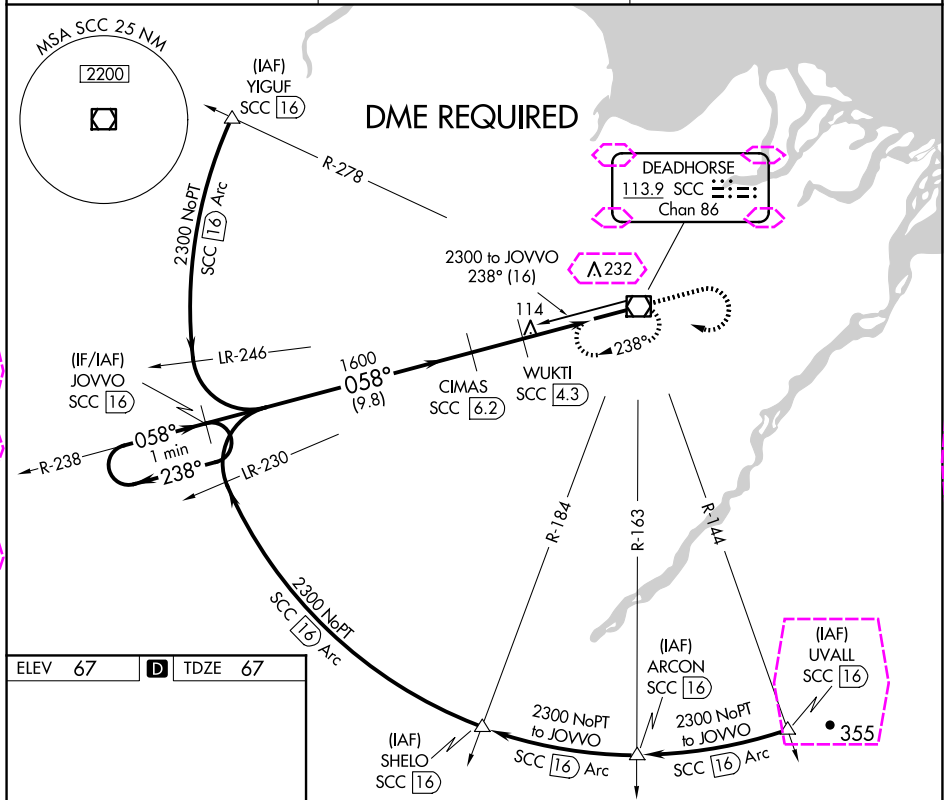
VOR/DME SCC	APP CRS	Rwy Idg	6500
113.9	058°	TDZE	67
Chan 86		Apt Elev	67

VOR RWY 6

DEADHORSE (SCC) (PASC)

DME required. For inop ALS, increase S-6 Cats C/D/E to RVR 4500.	MALSR 	MISSED APPROACH: Climb to 1500 then climbing right turn to 2000 direct SCC VOR/DME and hold, continue climb-in-hold to 2000.
--	---	---

AFIS 118.4	ANCHORAGE CENTER 134.4 370.9	DEADHORSE RADIO 123.6 (CTAF) 0
----------------------	--	--



One Minute Holding Pattern		JOVVO SCC 16	CIMAS SCC 6.2	WUKTI SCC 4.3	1500	2000	SCC
2300 ← 238° → 058° → 058°		1600	980	3.02° TCH 50	SCC 2.4	SCC 1.6	
		9.8 NM	1.9 NM	1.9 NM	0.8		
CATEGORY	A	B	C	D	E		
S-6	380/24 313 (400-½)						
CIRCLING	540-1	473 (500-1)	580-1½ 513 (600-1½)	620-2	553 (600-2)		

DEADHORSE, ALASKA
Amdt 3 12OCT17

70°12'N-148°28'W

DEADHORSE (SCC) (PASC)
VOR RWY 6

AK, 12 JUN 2025 to 07 AUG 2025

AK, 12 JUN 2025 to 07 AUG 2025

DEADHORSE, ALASKA


AL-5776 (FAA)

25219

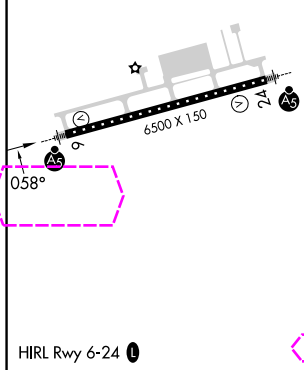
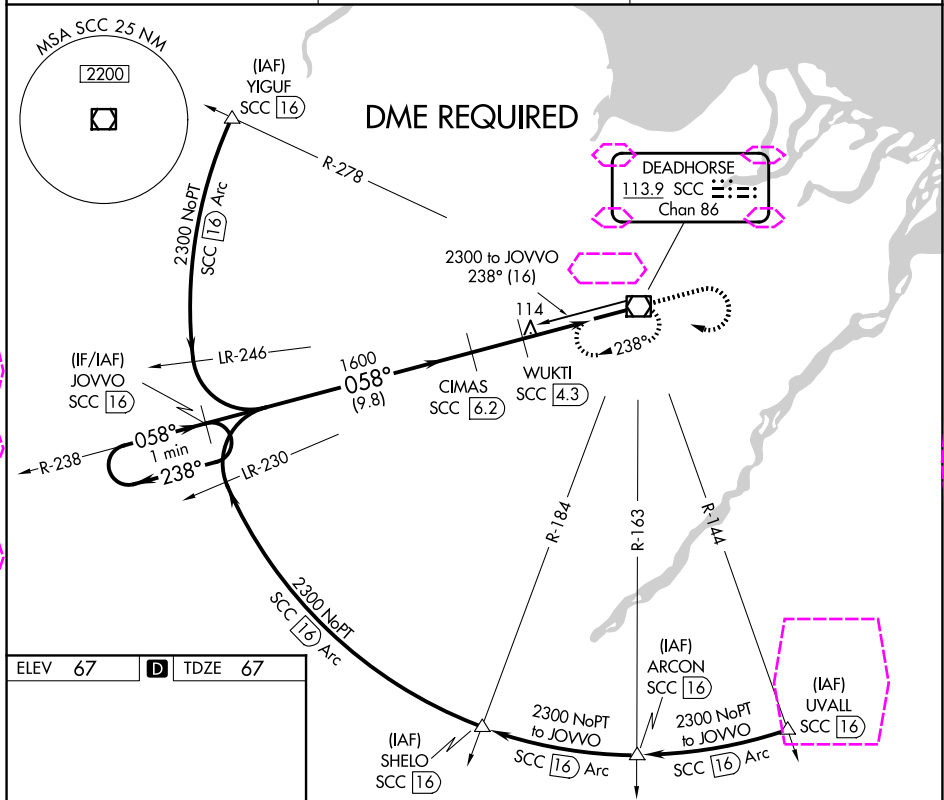
VOR/DME SCC	APP CRS	Rwy Ldg	6500
113.9	058°	TDZE	67
Chan 86		Apt Elev	67

VOR RWY 6

DEADHORSE (SCC) (PASC)

DME required. For inop ALS, increase S-6 Cats C/D/E to RVR 4500.	MALSR 	MISSED APPROACH: Climb to 1500 then climbing right turn to 2000 direct SCC VOR/DME and hold, continue climb-in-hold to 2000.
--	---	---

AFIS* 118.4	ANCHORAGE CENTER 134.4 370.9	DEADHORSE RADIO 123.6 (CTAF) 0
-----------------------	--	--



One Minute Holding Pattern		JOVVO SCC 16	CIMAS SCC 6.2	WUKTI SCC 4.3	1500	2000	SCC
2300 ← 238° → 058° → 058°		1600	980	SCC 2.4	SCC 1.6		
9.8 NM		1.9 NM	1.9 NM	0.8			
CATEGORY	A	B	C	D	E		
S-6	380/24 313 (400-1/2)						
CIRCLING	540-1	473 (500-1)	580-1 1/2 513 (600-1 1/2)	620-2	553 (600-2)		

DEADHORSE, ALASKA
Amdt 3 12OCT17

70°12'N-148°28'W

DEADHORSE (SCC) (PASC)
VOR RWY 6

AK, 07 AUG 2025 to 02 OCT 2025

AK, 07 AUG 2025 to 02 OCT 2025