

DEADHORSE, ALASKA

AL-5776 (FAA)

21168

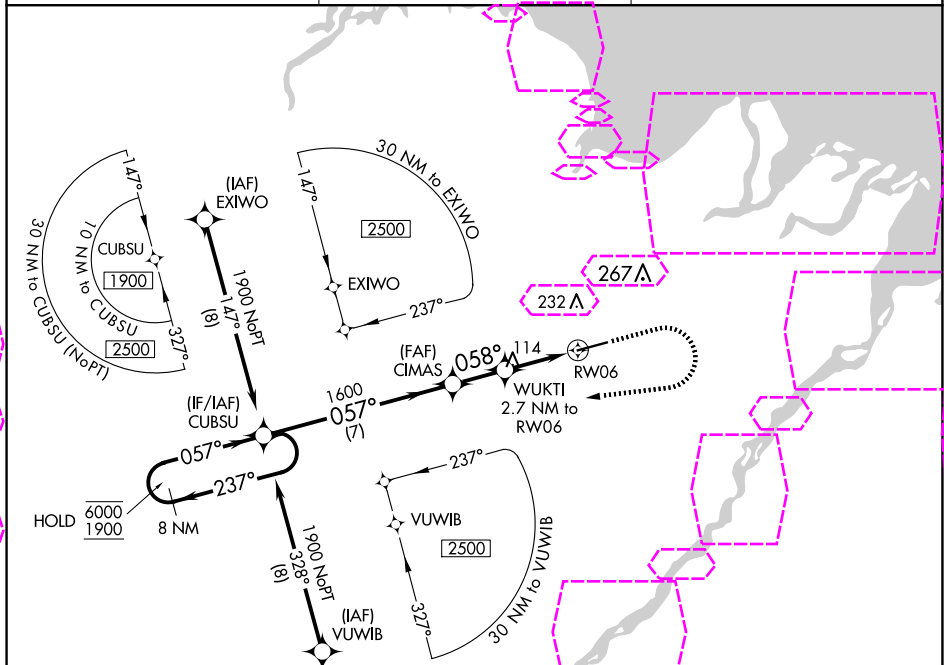
WAAS CH 49103 W06A	APP CRS 058°	Rwy Idg 6500 TDZE 67 Apt Elev 67
--	------------------------	---

RNAV (GPS) Z RWY 6

DEADHORSE (SCC) (PASC)

RNP APCH. ▼ ▲ For uncompensated Baro-VNAV systems, LNAV/VNAV NA below -17°C or above 54°C. For inop ALS, increase LPV Cat E visibility to RVR 4000, and increase LNAV/VNAV all Cats and LNAV Cats C/D/E visibility to RVR 4500. # RVR 1800 authorized with use of FD or AP or HUD to DA.	MALSR AS	MISSED APPROACH: Climb to 500 then climbing right turn to 1900 direct CUBSU and hold.
--	-------------	---

AFIS 118.4	ANCHORAGE CENTER 134.4 370.9	DEADHORSE RADIO 123.6 (CTAF) 0
----------------------	--	--



VGSi and RNAV glidepath not coincident (VGSi Angle 3.00/TCH 50).						ELEV 67	D	TDZE 67
<div>8 NM Holding Pattern</div> <div>CUBSU</div> <div>GP 3.00° TCH 58</div> <div>6000 ← 237°</div> <div>1900 → 057°</div> <div>057°</div> <div>1600</div> <div>CIMAS 1600</div> <div>WUKTI 2.7 NM to RW06</div> <div>* 0.8 NM to RW06</div> <div>RW06</div> <div>* LNAV only.</div> <div>500</div> <div>1900</div> <div>CUBSU</div> <div>↑</div> <div>↷</div> <div>✦</div>								
CATEGORY	A	B	C	D	E			
LPV DA#	267/24 200 (200-½)							
LNAV/VNAV DA	369/24 302 (400-½)							
LNAV MDA	380/24 313 (400-½)							
CIRCLING	540-1	473 (500-1)	580-1½ 513 (600-1½)	620-2	553 (600-2)	HIRL Rwy 6-24		

DEADHORSE, ALASKA
Amdt 2B 10SEP20

70°12'N-148°28'W

DEADHORSE (SCC) (PASC)
RNAV (GPS) Z RWY 6

DEADHORSE, ALASKA

AL-5776 (FAA)

25219

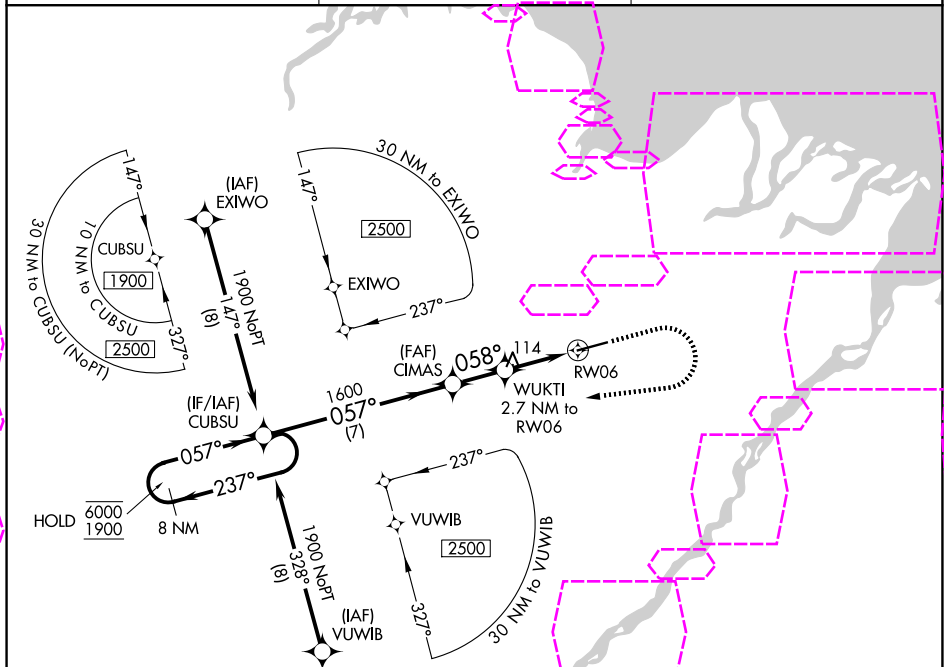
WAAS CH 49103 W06A	APP CRS 058°	Rwy Ldg 6500 TDZE 67 Apt Elev 67
--	------------------------	---

RNAV (GPS) Z RWY 6

DEADHORSE (SCC) (PASC)

RNP APCH. ▼ ▲ For uncompensated Baro-VNAV systems, LNAV/VNAV NA below -17°C or above 54°C. For inop ALS, increase LPV Cat E visibility to RVR 4000, and increase LNAV/VNAV all Cats and LNAV Cats C/D/E visibility to RVR 4500. # RVR 1800 authorized with use of FD or AP or HUD to DA.	MALSR AS	MISSED APPROACH: Climb to 500 then climbing right turn to 1900 direct CUBSU and hold.
--	-------------	---

AFIS* 118.4	ANCHORAGE CENTER 134.4 370.9	DEADHORSE RADIO 123.6 (CTAF) 0
-----------------------	--	--



VGSi and RNAV glidepath not coincident (VGSi Angle 3.00/TCH 50).					500	1900	CUBSU
8 NM Holding Pattern					↑	↷	✦
GP 3.00° TCH 58					* LNAV only.		
CUBSU					CIMAS		
1600					WUKTI 2.7 NM to RW06		
057°					* 0.8 NM to RW06		
058°					RW06		
7 NM					1.9 NM		
1.9 NM					0.8		
CATEGORY	A	B	C	D	E		
LPV DA#	267/24 200 (200-½)						
LNAV/VNAV DA	369/24 302 (400-½)						
LNAV MDA	380/24 313 (400-½)						
CIRCLING	540-1	473 (500-1)	580-1½ 513 (600-1½)	620-2	553 (600-2)	HIRL Rwy 6-24	

DEADHORSE, ALASKA
Amdt 2B 10SEP20

70°12'N-148°28'W

DEADHORSE (SCC) (PASC)
RNAV (GPS) Z RWY 6