

WAAS CH 69203 W24A	APP CRS 238°	Rwy Idg 6500 TDZE 66 Apt Elev 67
--	------------------------	---

RNAV (GPS) Z RWY 24
DEADHORSE (SCC) (PASC)

T For uncompensated Baro-VNAV systems, LNAV/VNAV NA below -17°C (2°F) or above 54°C (130°F). DME/DME RNP-0.3 NA.
For inop ALS, increase LPV Cat E visibility to RVR 4000, LNAV/VNAV all Cat visibility to RVR 5000, and LNAV Cat E visibility to RVR 6000.
#RVR 1800 authorized with use of FD or AP or HUD to DA.

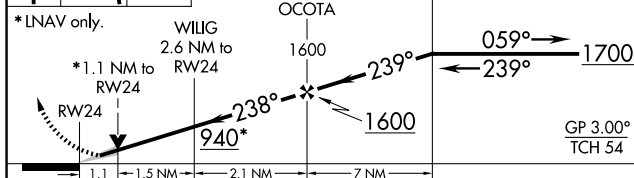
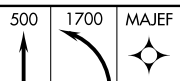
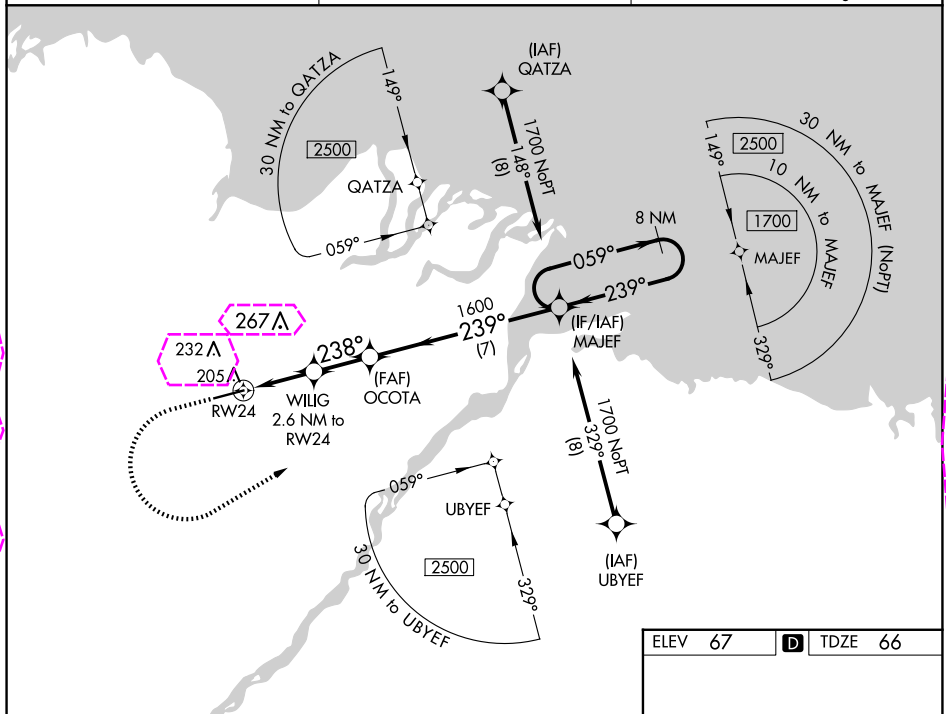
MALSR



MISSED APPROACH: Climb to 500 then climbing left turn to 1700 direct MAJEF and hold.

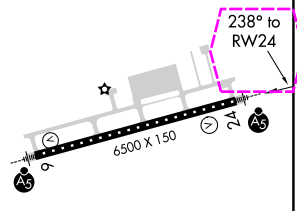
AFIS
118.4

ANCHORAGE CENTER
134.4 370.9

DEADHORSE RADIO
123.6 (CTAF) **L**

CATEGORY		A	B	C	D	E
LPV	DA#	266/24 200 (200-½)				
LNNAV/ VNAV	DA	381/30 315 (400-⅔)				
LNNAV	MDA	460/24	394 (400-½)	460/35 394 (400-⅔)		
C CIRCLING		540-1	473 (500-1)	580-1½ 513 (600-1½)	620-2 553 (600-2)	

ELEV 67	D	TDZE 66
---------	----------	---------



DEADHORSE, ALASKA
Amdt 2A 07DEC17

70°12'N-148°28'W

DEADHORSE (SCC) (PASC)

RNAV (GPS) Z RWY 24

AK, 12 JUN 2025 to 07 AUG 2025

AK, 12 JUN 2025 to 07 AUG 2025

DEADHORSE, ALASKA

AL-5776 (FAA)

25219


WAAS CH 69203 W24A	APP CRS 238°	Rwy Ldg TDZE 66 Apt Elev 67
--	------------------------	---

RNAV (GPS) Z RWY 24

DEADHORSE (SCC) (PASC)

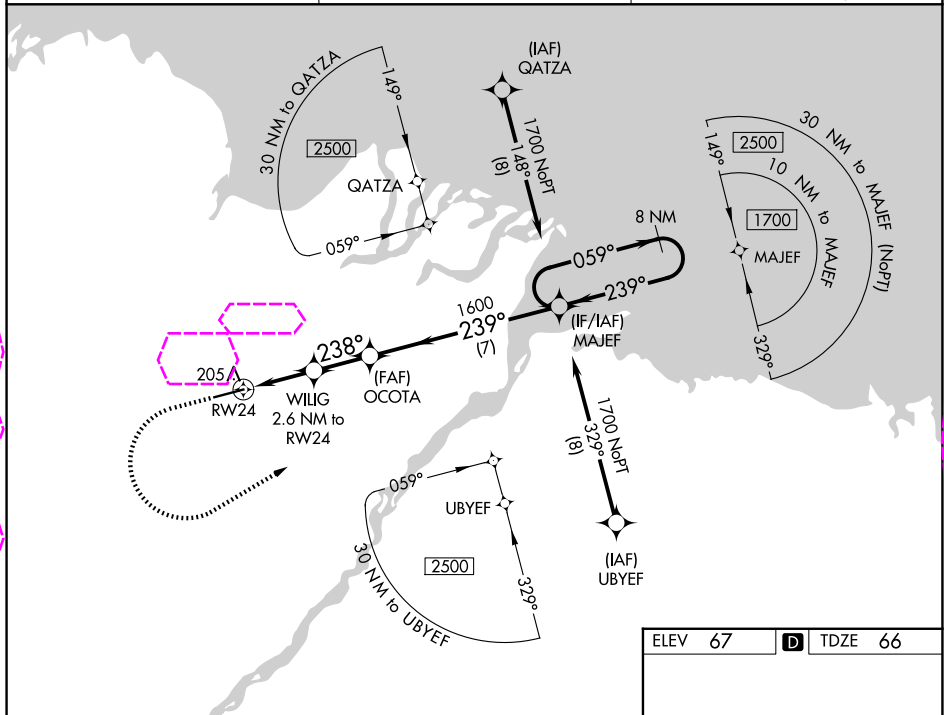
▼ For uncompensated Baro-VNAV systems, LNAV/VNAV NA below -17°C (2°F) or above 54°C (130°F). DME/DME RNP-0.3 NA.
For inop ALS, increase LPV Cat E visibility to RVR 4000, LNAV/VNAV all Cats visibility to RVR 5000, and LNAV Cat E visibility to RVR 6000.
RVR 1800 authorized with use of FD or AP or HUD to DA.

MALSR

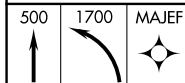


MISSED APPROACH: Climb to 500 then climbing left turn to 1700 direct MAJEF and hold.

AFIS★ 118.4	ANCHORAGE CENTER 134.4 370.9	DEADHORSE RADIO 123.6 (CTAF) 0
-----------------------	--	--



500 1700 MAJEF



* LNAV only.

WILIG 2.6 NM to RW24

* 1.1 NM to RW24

RW24

OCOTA 1600

MAJEF 8 NM Holding Pattern

059° 1700

239° 1600

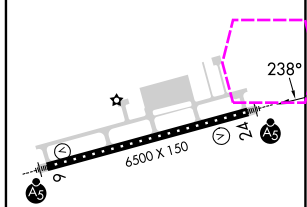
238° 940*

GP 3.00° TCH 54

1.1 1.5 NM 2.1 NM 7 NM

CATEGORY	A	B	C	D	E
LPV DA#	266/24 200 (200-½)				
LNAV/VNAV DA	381/30 315 (400-¾)				
LNAV MDA	460/24	394 (400-½)	460/35	394 (400-¾)	
CIRCLING	540-1	473 (500-1)	580-1½ 513 (600-1½)	620-2	553 (600-2)

ELEV 67 D TDZE 66



HIRL Rwy 6-24 0

DEADHORSE, ALASKA
Amdt 2A 07DEC17

70°12'N-148°28'W

DEADHORSE (SCC) (PASC)
RNAV (GPS) Z RWY 24

AK, 07 AUG 2025 to 02 OCT 2025

AK, 07 AUG 2025 to 02 OCT 2025