

LOC/DME I-SCC 109.3 Chan 30	APP CRS 238°	Rwy Ldg 6500 TDZE 66 Apt Elev 67
---	------------------------	---

LOC BC RWY 24
DEADHORSE (SCC) (PASC)

DME required.

T For inop ALS, increase *S-LOC 24 Cat E
A visibility to RVR 5000 and S-LOC 24 Cat
C/D/E visibility to RVR 5500.

MAISR



MISSED APPROACH: Climb to 1500 then climbing left turn to 4000 on heading 100° and SCC VOR/DME R-144 to UVALL/SCC VOR/DME 16 DME and hold.
*Missed approach requires minimum climb of 243 feet per NM to 780.

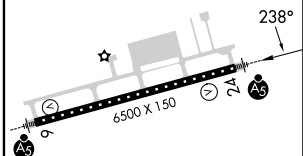
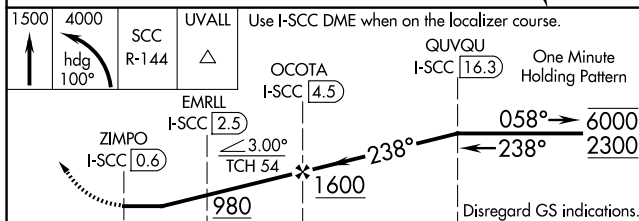
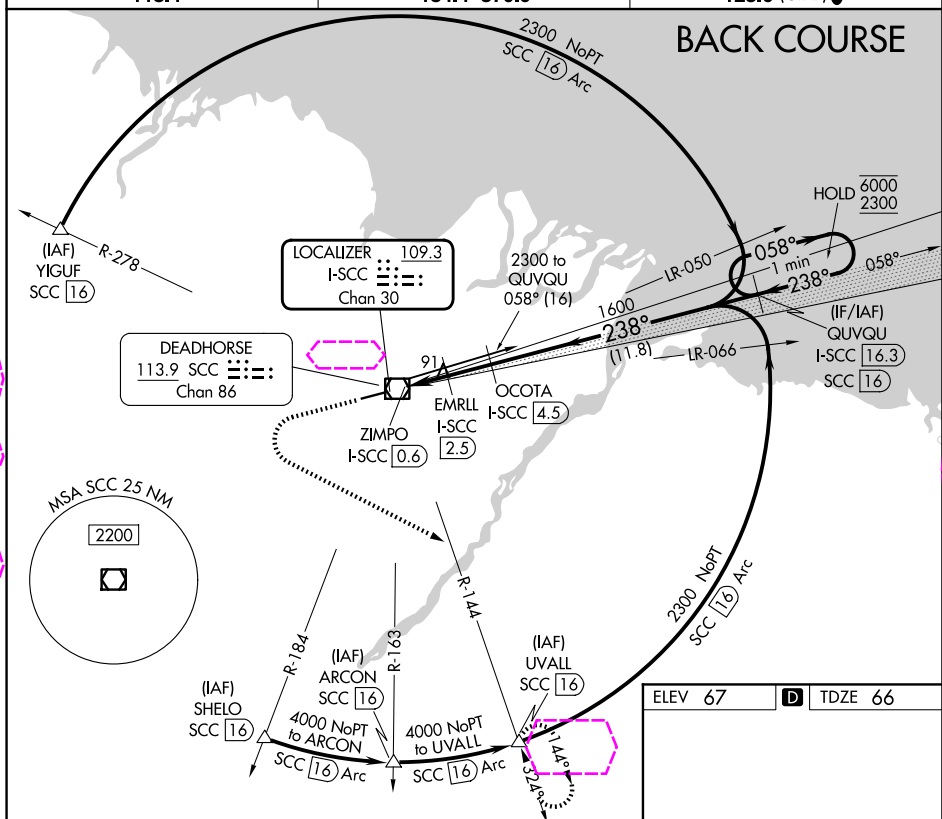
AFIS ★

118.4

ANCHORAGE CENTER

134.4 370.9

DEADHORSE RADIO

123.6 (CTAF) **L**

	0.8	1.9 NM	2 NM	11.8 NM	
CATEGORY	A	B	C	D	E
S-LOC 24*	360/24 294 (300-½)				
S-LOC 24	420/24	354 (400-½)	420/30	354 (400-¾)	
CIRCLING	540-1	473 (500-1)	580-1½ 513 (600-1½)	620-2 553 (600-2)	

HIRL Rwy 6-24 **L**

DEADHORSE, ALASKA

Amdt 1 05SEP24

70°12'N-148°28'W

DEADHORSE (SCC)(PASC)

LOC BC RWY 24

AK, 07 AUG 2025 to 02 OCT 2025

AK, 07 AUG 2025 to 02 OCT 2025