

DEADHORSE, ALASKA

AL-5776 (FAA)

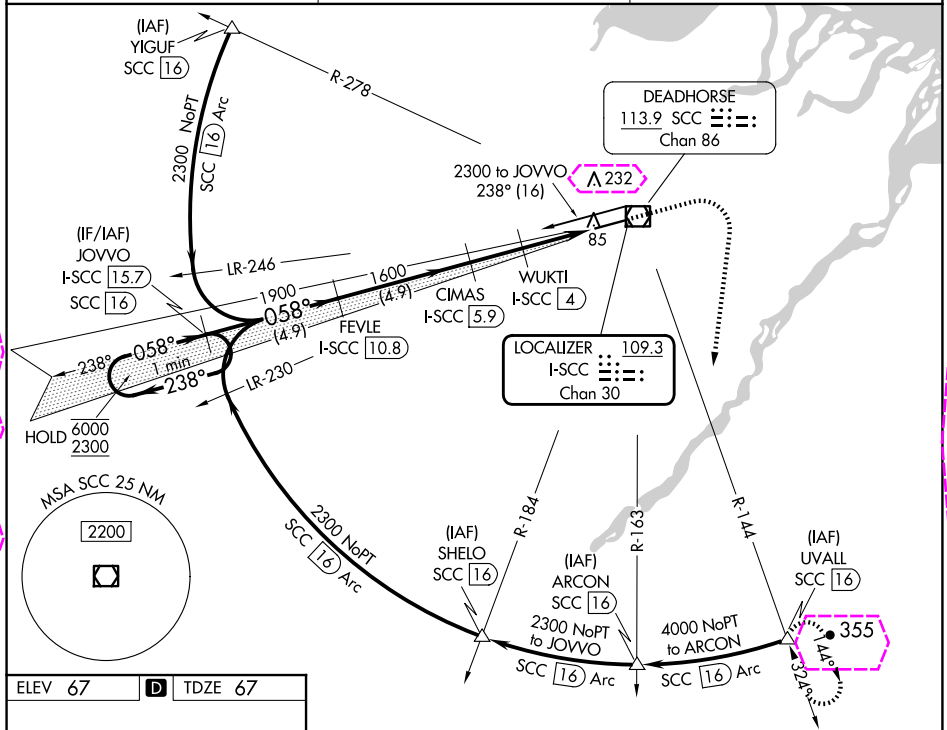
24249

LOC/DME I-SCC 109.3 Chan 30	APP CRS 058°	Rwy Idg 6500 TDZE 67 Apt Elev 67
---	------------------------	---

ILS or LOC RWY 6 DEADHORSE (SCC) (PASC)

DME required. For inop ALS, increase S-ILS 6 Cat E visibility to RVR 4000 and S-LOC 6 Cats C/D/E to RVR 4500. *RVR 1800 authorized with use of FD or AP or HUD to DA.	MALSR 	MISSED APPROACH: Climb to 1500 then climbing right turn to 4000 on heading 170° and SCC VOR/DME R-144 to UVALL/SCC 16 DME and hold.
---	-----------	---

APIS 118.4	ANCHORAGE CENTER 134.4 370.9	DEADHORSE RADIO 123.6 (CTAF) 0
----------------------	--	--



LOC/DME I-SCC 109.3 Chan 30	APP CRS 058°	Rwy Ldg 6500 TDZE 67 Apt Elev 67
---	------------------------	---

ILS or LOC RWY 6
DEADHORSE (SCC) (PASC)

DME required.

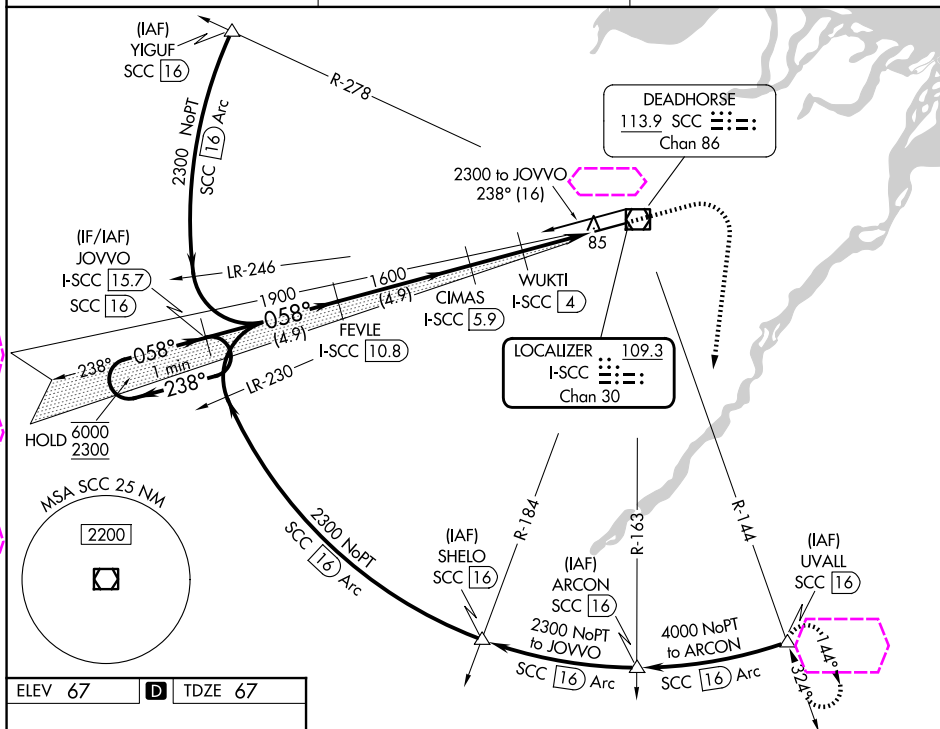
T For inop ALS, increase S-ILS 6 Cat E visibility to RVR 4000 and
A S-LOC 6 Cats C/D/E to RVR 4500.
 *RVR 1800 authorized with use of FD or AP or HUD to DA.

MAISR

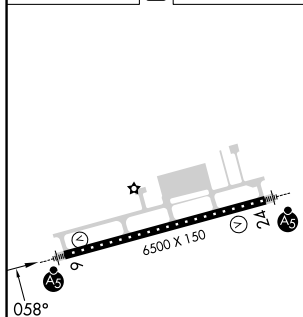


MISSED APPROACH: Climb to 1500 then climbing right turn to 4000 on heading 170° and SCC VOR/DME R-144 to UVALL/SCC 16 DME and hold.

APIS★ 118.4	ANCHORAGE CENTER 134.4 370.9	DEADHORSE RADIO 123.6 (CTAF) 0
------------------------------	---	---



ELEV 67	D	TDZE 67
---------	----------	---------



VGSI and ILS glidepath not coincident (VGSI Angle 3.00/TCH 50).						1500 ↑	4000 hdg 170°	SCC R-144	UVAL △	
JOVVO I-SCC 15.7						FEVLE I-SCC 10.8	CIMAS I-SCC 5.9	Use I-SCC DME when on the localizer course.		
One Minute Holding Pattern						1600	WUKTI I-SCC 4	I-SCC 2	I-SCC 1.3	
6000 ← 238°						058°	1900	1600	980	
2300 058° →										
GS 3.00° TCH 58										
						4.9 NM	4.9 NM	1.9 NM	1.9 NM	0.8
CATEGORY	A	B	C	D	E					
S-ILS 6 *	267/24 200 (200-1/2)									
S-LOC 6	360/24 293 (300-1/2)									
CIRCLING	540-1	473 (500-1)	580-1 1/2 513 (600-1 1/2)	620-2	553 (600-2)					

DEADHORSE, ALASKA
Amdt 5 05SEP24

70°12'N-148°28'W

DEADHORSE (SCC) (PASC)
ILS or LOC RWY 6

AK, 07 AUG 2025 to 02 OCT 2025

AK, 07 AUG 2025 to 02 OCT 2025