

KAISER/LAKE OZARK, MISSOURI

AL-5765 (FAA)

23110

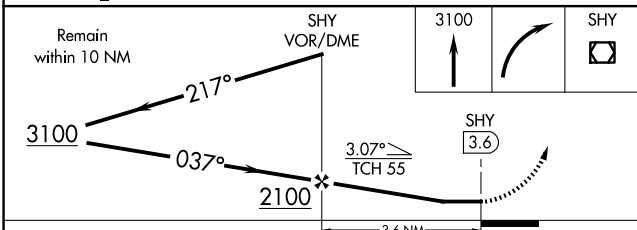
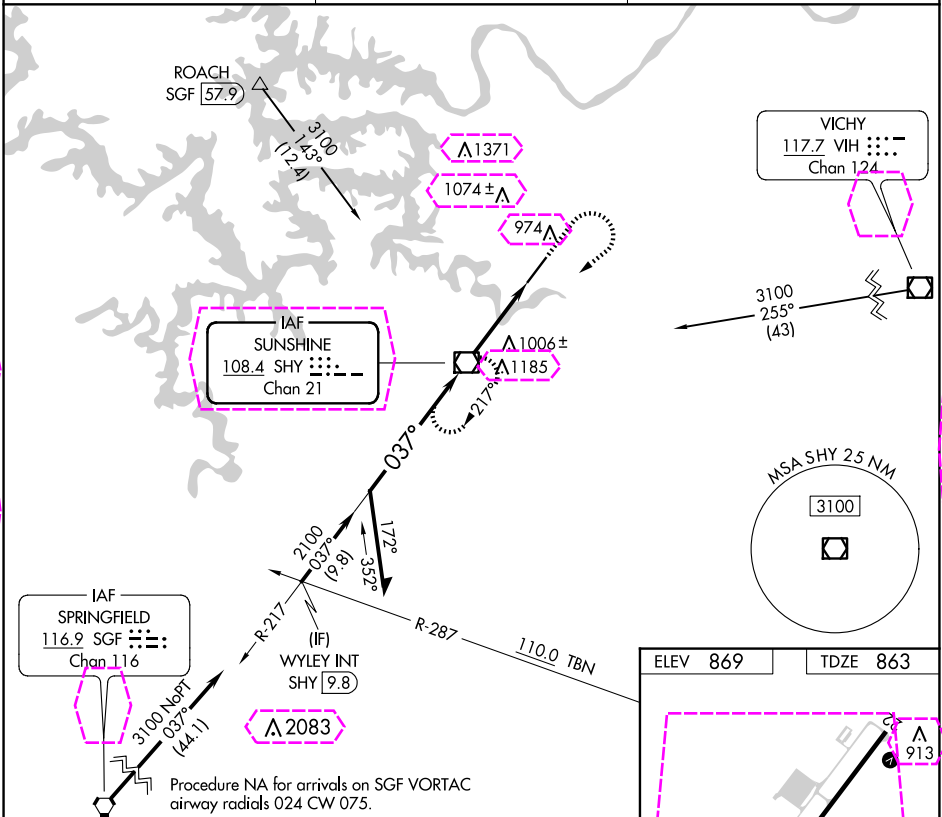
VOR/DME SHY 108.4 Chan 21	APP CRS 037°	Rwy Idg 6497 TDZE 863 Apt Elev 869
---	------------------------	---

VOR RWY 4
LEE C FINE MEML (AIZ)

⚠ Straight-in minimums NA at night. Helicopter visibility reduction below 1 SM NA. When local altimeter setting not received, use Camdenton altimeter setting and increase all MDAs 60 feet and S-4 Cat C and Circling Cat C visibility ¼ SM.

MISSED APPROACH: Climb to 3100 then right turn direct SHY VOR/DME and hold.

AWOS-3PT 135.325	MIZZU APP CON 124.1 353.925	UNICOM 122.8 (CTAF) 0
----------------------------	---------------------------------------	---------------------------------



CATEGORY	A	B	C	D
S-4	1260-1	397 (400-1)	1260-1½ 397 (400-1½)	NA
CIRCLING	1320-1 451 (500-1)	1380-1 511 (600-1)	1440-1½ 571 (600-1½)	NA

ELEV 869	TDZE 863
MRL Rwy 4-22	
FAF to MAP 3.6 NM	
Knots	60 90 120 150 180
Min:Sec	3:36 2:24 1:48 1:26 1:12

KAISER/LAKE OZARK, MISSOURI
Amdt 7C 12AUG21

38°06'N-92°33'W

LEE C FINE MEML (AIZ)
VOR RWY 4

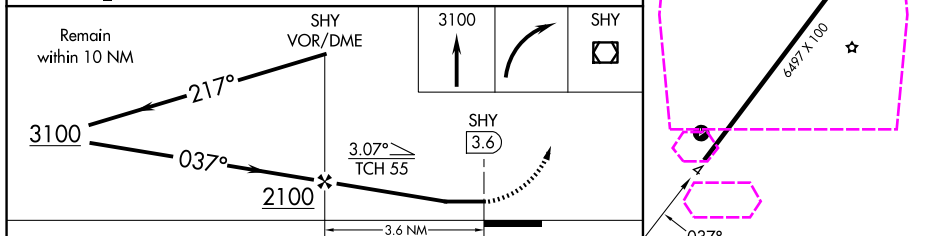
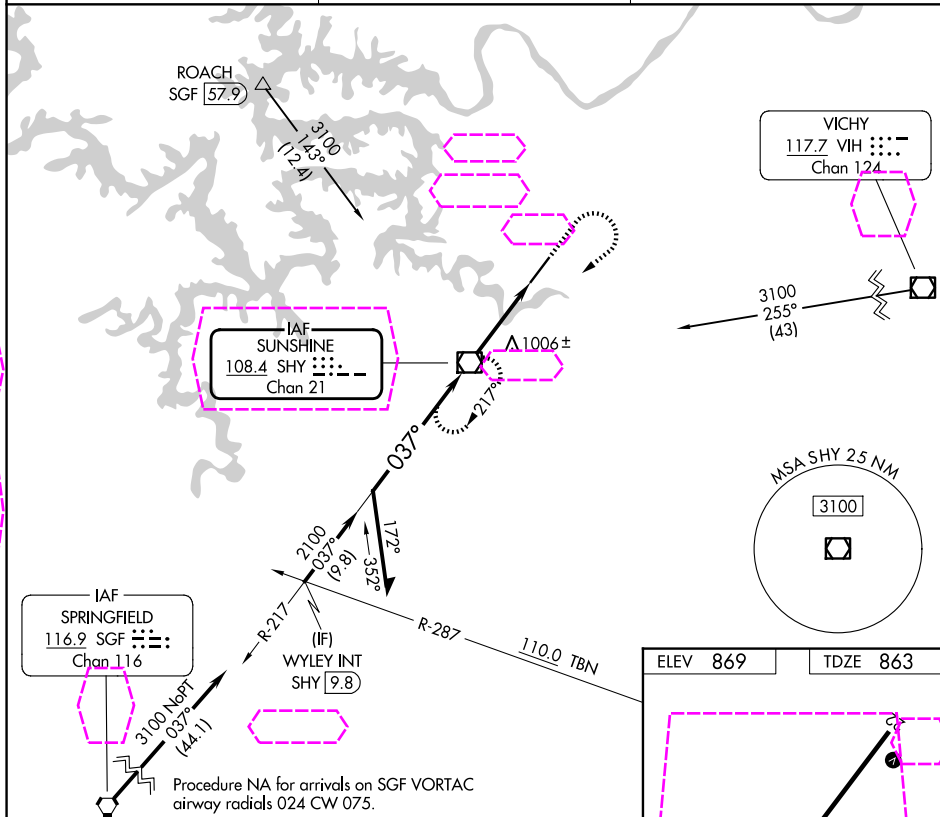
VOR/DME SHY 108.4 Chan 21	APP CRS 037°	Rwy Ldg 6497 TDZE 863 Apt Elev 869
--	------------------------	---

VOR RWY 4
LEE C FINE MEML (AIZ)

- T** Straight-in minimums NA at night. Helicopter visibility reduction below 1 SM NA.
A When local altimeter setting not received, use Camdenton altimeter setting and increase all MDAs 60 feet and S-4 Cat C and Circling Cat C visibility $\frac{1}{4}$ SM.

MISSED APPROACH: Climb to 3100 then right turn direct SHY VOR/DME and hold.

AWOS-3PT 135,325	MIZZU APP CON 124.1 353,925	UNICOM 122.8 (CTAF) 0
----------------------------	---------------------------------------	--



CATEGORY	A	B	C	D	MIRL Rwy 4-22					
S-4	1260-1 397 (400-1)		1260-1 $\frac{1}{8}$ 397 (400-1 $\frac{1}{8}$)	NA	FAF to MAP 3.6 NM					
CIRCLING	1320-1 451 (500-1)	1380-1 511 (600-1)	1440-1 $\frac{1}{2}$ 571 (600-1 $\frac{1}{2}$)	NA	Knots	60	90	120	150	180
					Min:Sec	3:36	2:24	1:48	1:26	1:12

KAISER/LAKE OZARK, MISSOURI
Amdt 7C 12AUG21

38°06'N-92°33'W

LEE C FINE MEML (AIZ)
VOR RWY 4

NC-3, 07 AUG 2025 to 04 SEP 2025

NC-3, 07 AUG 2025 to 04 SEP 2025