

KAISER/LAKE OZARK, MISSOURI

AL-5765 (FAA)

23110

|  |                        |   |
|--|------------------------|---|
| WAAS<br>CH <b>65901</b><br><b>W04A</b> | APP CRS<br><b>037°</b> | Rwy Idg <b>6497</b><br>TDZE <b>863</b><br>Apt Elev <b>869</b> |
|--|------------------------|---|

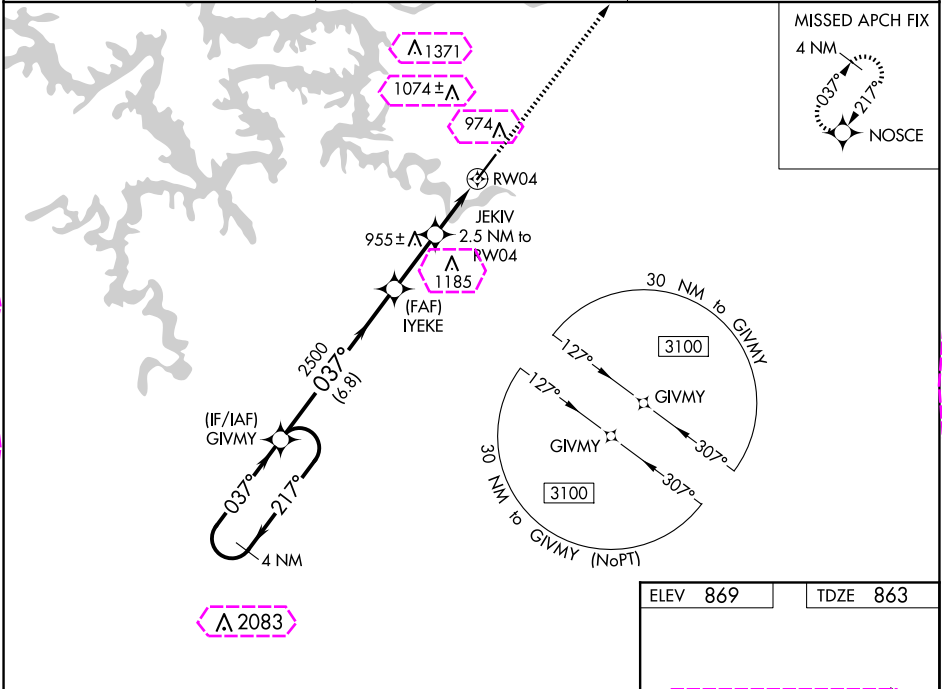
**RNAV (GPS) RWY 4**  
LEE C FINE MEML (AIZ)

RNP APCH.

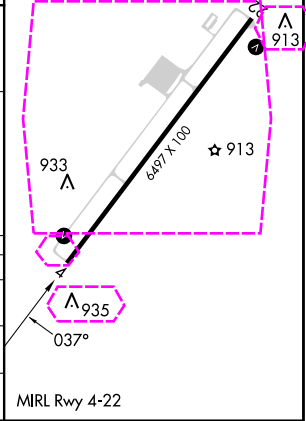
▼ For uncompensated Baro-VNAV systems, LNAV/VNAV NA below -16°C or above 54°C. Procedure NA at night. Rwy 4 helicopter visibility reduction below 1 SM NA. When local altimeter setting not received, use Camdenton altimeter setting and increase all DA 50 feet, all MDA 60 feet, and LNAV Cat C visibility ½ mile. Baro-VNAV NA when using Camdenton altimeter setting.

MISSED APPROACH: Climb to 3000 direct NOSCE and hold.

|                            |                                       |                                 |
|----------------------------|---------------------------------------|---------------------------------|
| AWOS-3PT<br><b>135.325</b> | MIZZU APP CON<br><b>124.1 353.925</b> | UNICOM<br><b>122.8 (CTAF) 0</b> |
|----------------------------|---------------------------------------|---------------------------------|



| CATEGORY     | A      | B           | C | D  |
|--------------|--------|-------------|---|----|
| LPV DA       | 1127-1 | 264 (300-1) |   | NA |
| LNAV/VNAV DA | 1113-1 | 250 (300-1) |   | NA |
| LNAV MDA     | 1220-1 | 357 (400-1) |   | NA |



NC-3, 10 JUL 2025 to 07 AUG 2025

NC-3, 10 JUL 2025 to 07 AUG 2025

KAISER/LAKE OZARK, MISSOURI

AL-5765 (FAA)

25219

|  |                        |   |
|--|------------------------|---|
| WAAS<br>CH <b>65901</b><br><b>W04A</b> | APP CRS<br><b>037°</b> | Rwy Ldg<br>TDZE <b>863</b><br>Apt Elev <b>869</b> |
|--|------------------------|---|

# RNAV (GPS) RWY 4

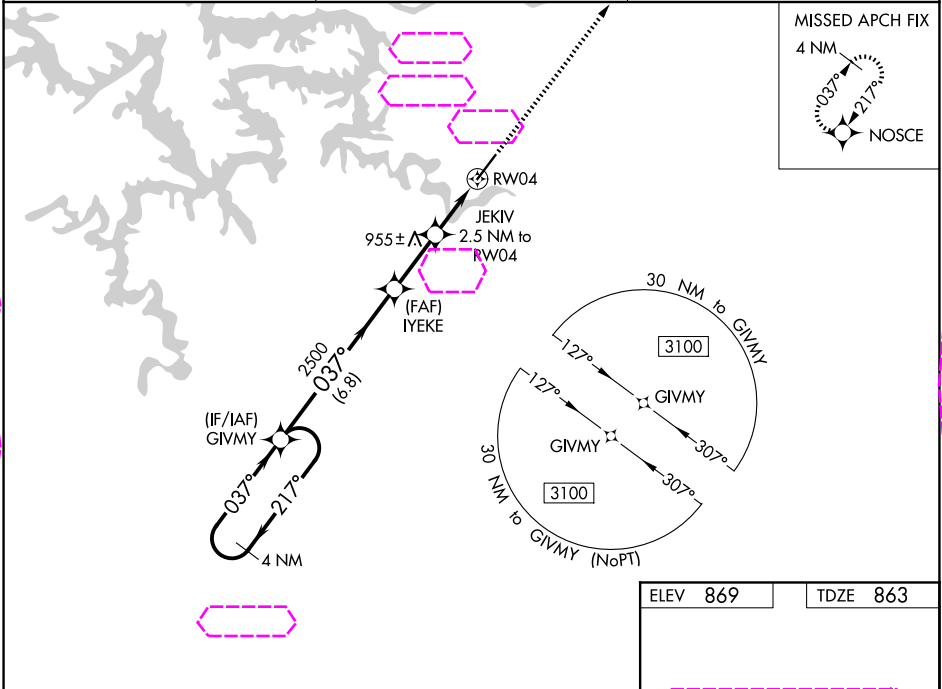
LEE C FINE MEML (AIZ)

RNP APCH.

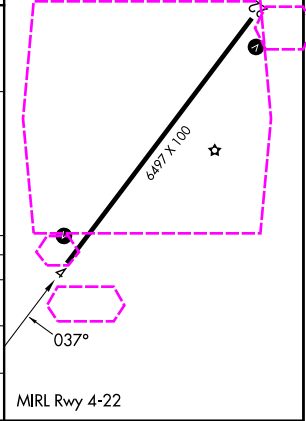
▼ For uncompensated Baro-VNAV systems, LNAV/VNAV NA below -16°C or above 54°C. Procedure NA at night. Rwy 4 helicopter visibility reduction below 1 SM NA. When local altimeter setting not received, use Camdenton altimeter setting and increase all DA 50 feet, all MDA 60 feet, and LNAV Cat C visibility ½ mile. Baro-VNAV NA when using Camdenton altimeter setting.

MISSED APPROACH: Climb to 3000 direct NOSCE and hold.

|                            |                                       |                                 |
|----------------------------|---------------------------------------|---------------------------------|
| AWOS-3PT<br><b>135.325</b> | MIZZU APP CON<br><b>124.1 353.925</b> | UNICOM<br><b>122.8 (CTAF) 0</b> |
|----------------------------|---------------------------------------|---------------------------------|



|                      |  |                    |  |        |  |                      |  |        |  |
|----------------------|--|--------------------|--|--------|--|----------------------|--|--------|--|
| 4 NM Holding Pattern |  | GIVMY              |  | IYEKE  |  | JEKIV 2.5 NM to RW04 |  | RW04   |  |
| 3100                 |  | ←217°              |  | 037°→  |  | 037°                 |  | 2500   |  |
| GP 3.00°             |  | TCH 55°            |  | 6.8 NM |  | 2.5 NM               |  | 2.5 NM |  |
| CATEGORY             |  | A                  |  | B      |  | C                    |  | D      |  |
| LPV DA               |  | 1127-1 264 (300-1) |  |        |  | NA                   |  |        |  |
| LNAV/VNAV DA         |  | 1113-1 250 (300-1) |  |        |  | NA                   |  |        |  |
| LNAV MDA             |  | 1220-1 357 (400-1) |  |        |  | NA                   |  |        |  |



KAISER/LAKE OZARK, MISSOURI  
Amdt 1B 18JUL19

38°06'N-92°33'W

LEE C FINE MEML (AIZ)  
**RNAV (GPS) RWY 4**

NC-3, 07 AUG 2025 to 04 SEP 2025

NC-3, 07 AUG 2025 to 04 SEP 2025