

KAISER/LAKE OZARK, MISSOURI

AL-5765 (FAA)

23110

WAAS CH 72732 W22A	APP CRS 217°	Rwy Idg 6497 TDZE 869 Apt Elev 869
--	------------------------	---

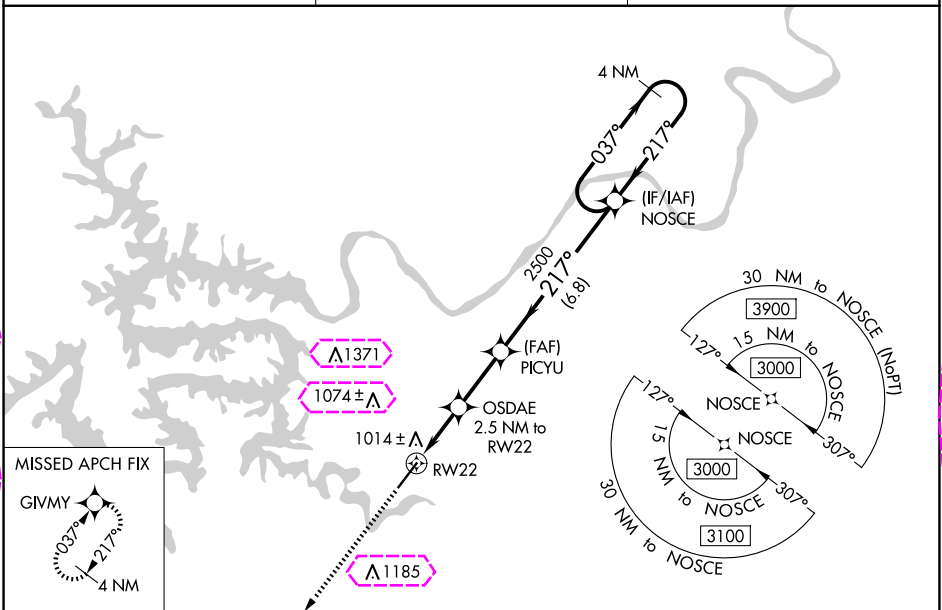
RNAV (GPS) RWY 22

LEE C FINE MEML (AIZ)

⚠ For uncompensated Baro-VNAV systems, LNAV/VNAV NA below -16°C or above 54°C.
⚠ DME/DME RNP-0.3 NA. Helicopter visibility reduction below 1 SM NA. When local altimeter setting not received, use Camdenton altimeter setting and increase all DAs 50 feet and all MDAs 60 feet, increase LNAV/VNAV all Cats visibility 1/8 SM and LNAV Cat C and Circling Cat C 1/4 SM. Baro-VNAV and VDP NA with Camdenton altimeter setting.

MISSED APPROACH:
Climb to 3100 direct GIVMY and hold.

AWOS-3PT 135.325	MIZZU APP CON 124.1 353.925	UNICOM 122.8 (CTAF) 0
----------------------------	---------------------------------------	---------------------------------



ELEV 869	TDZE 869
-----------------	-----------------

3100 GIVMY		OSDAE 2.5 NM to RW22		PICYU 2500	NOSCE	4 NM Holding Pattern
*LNAV only		*1.2 NM to RW22		2500	217°	037°
RW22		1700*		2500	217°	3000
1.2 NM		1.3 NM		2.5 NM		6.8 NM
CATEGORY	A	B	C	D	GP 3.00° TCH 42	
LPV DA	1119-1	250 (300-1)	NA			
LNAV/VNAV DA	1164-1	295 (300-1)	NA			
LNAV MDA	1280-1	411 (500-1)	1280-1 1/8	411 (500-1 1/8)	NA	
CIRCLING	1320-1	451 (500-1)	1380-1	511 (600-1)	1440-1 1/2	571 (600-1 1/2)

KAISER/LAKE OZARK, MISSOURI
Amdt 1B 12AUG21

38°06'N-92°33'W

RNAV (GPS) RWY 22

LEE C FINE MEML (AIZ)

KAISER/LAKE OZARK, MISSOURI

AL-5765 (FAA)

25219

WAAS CH 72732 W22A	APP CRS 217°	Rwy Ldg TDZE 869 Apt Elev 869
--	------------------------	---

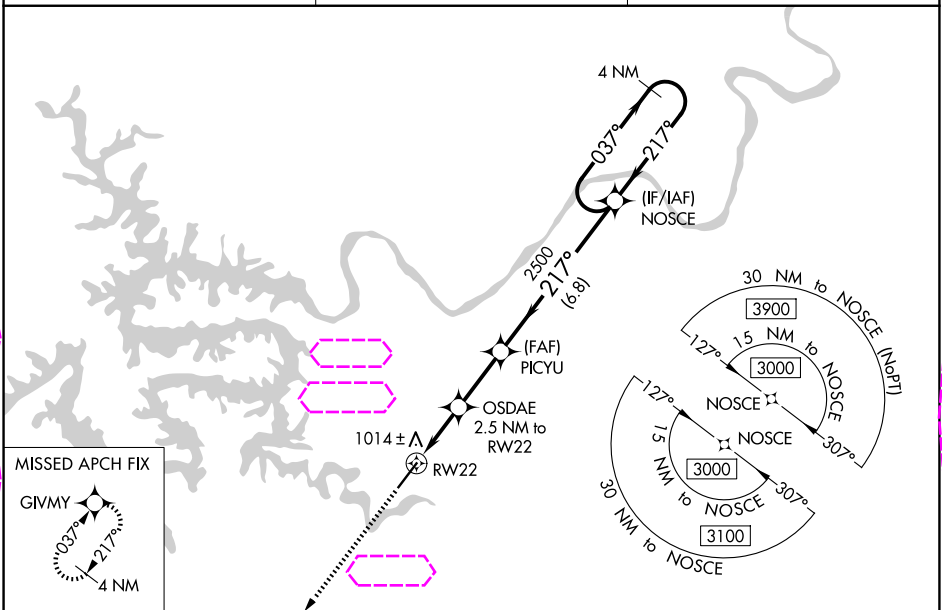
RNAV (GPS) RWY 22

LEE C FINE MEML (AIZ)

For uncompensated Baro-VNAV systems, LNAV/VNAV NA below -16°C or above 54°C.
DME/DME RNP-0.3 NA. Helicopter visibility reduction below 1 SM NA. When local altimeter setting not received, use Camdenton altimeter setting and increase all DAs 50 feet and all MDAs 60 feet, increase LNAV/VNAV all Cats visibility 1/8 SM and LNAV Cat C and Circling Cat C 1/4 SM. Baro-VNAV and VDP NA with Camdenton altimeter setting.

MISSED APPROACH:
Climb to 3100 direct GIVMY and hold.

AWOS-3PT 135.325	MIZZU APP CON 124.1 353.925	UNICOM 122.8 (CTAF)
----------------------------	---------------------------------------	-------------------------------



ELEV 869	TDZE 869
-----------------	-----------------

3100		GIVMY		OSDAE 2.5 NM to RW22		PICYU 2500		NOSCE		4 NM Holding Pattern	
*LNAV only		*1.2 NM to RW22		2500		2500		037° →		3000	
RW22		1700*		2500						GP 3.00° TCH 42	
1.2 NM		1.3 NM		2.5 NM		6.8 NM					
CATEGORY	A		B		C		D				
LPV DA	1119-1		250 (300-1)								NA
LNAV/ VNAV DA	1164-1		295 (300-1)								NA
LNAV MDA	1280-1		411 (500-1)		1280-1½ 411 (500-1½)						NA
CIRCLING	1320-1 451 (500-1)		1380-1 511 (600-1)		1440-1½ 571 (600-1½)						NA

KAISER/LAKE OZARK, MISSOURI

Amdt 1B 12AUG21

38°06'N-92°33'W

LEE C FINE MEML (AIZ)

RNAV (GPS) RWY 22

NC-3, 07 AUG 2025 to 04 SEP 2025

NC-3, 07 AUG 2025 to 04 SEP 2025