

LOC I-AIZ	APP CRS	Rwy Idg	6497
<u>111.5</u>	<b>217°</b>	TDZE	869
		Apt Elev	869

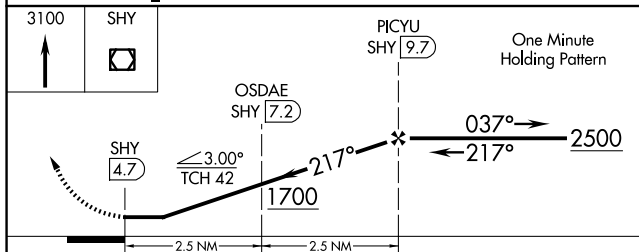
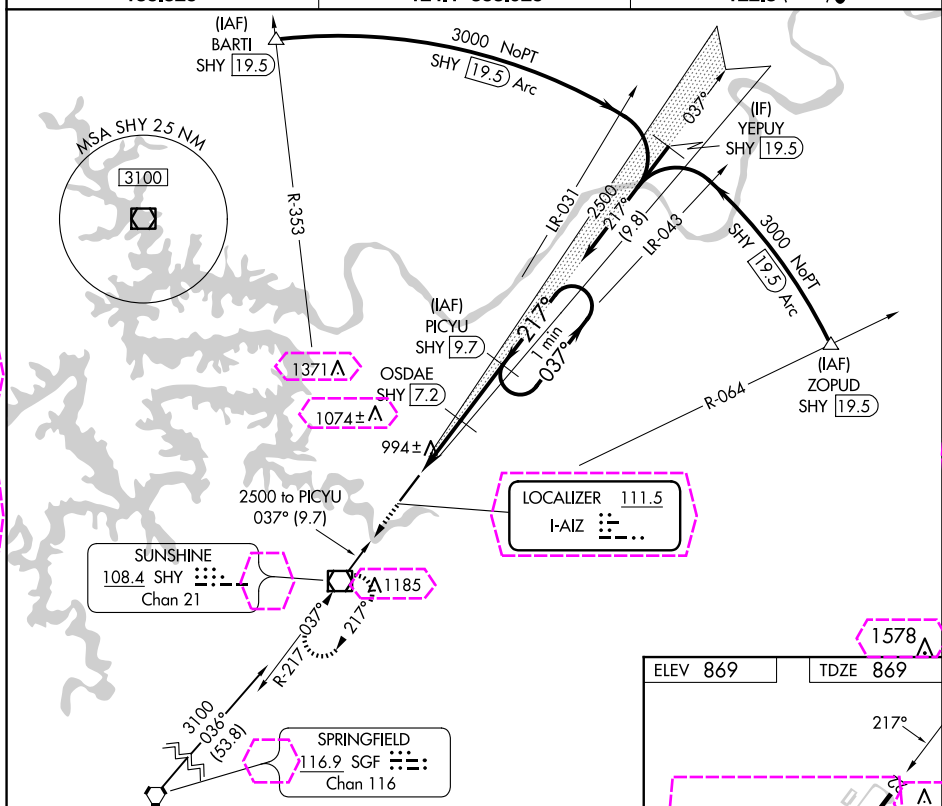
LOC/DME RWY 22  
LEE C FINE MEML (AIZ)

**T** When local altimeter setting not received, use Camdenton altimeter setting and increase all MDAs 60 feet, increase S-22 Cat C and Circling Cat C visibility  $\frac{1}{4}$  SM. Helicopter visibility reduction below 1 SM NA. DME from SHY VOR/DME. Simultaneous reception of I-AIZ and SHY VOR/DME required.

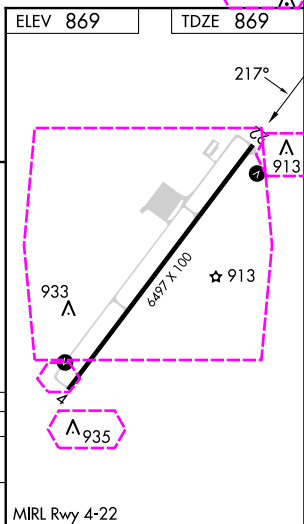
**MISSED APPROACH:** Climb to 3100 direct SHY VOR/DME and hold, continue climb-in-hold to 3100.

AWOS-3PT  
**135.325**

MIZZU APP CON  
124.1 353.925

UNICOM  
122.8 (CTAF) **L**

CATEGORY	A	B	C	D
S-22	1260-1	391 (400-1)	1260-1 $\frac{1}{8}$ 391 (400-1 $\frac{1}{8}$ )	NA
CIRCLING	1320-1 451 (500-1)	1380-1 511 (600-1)	1440-1 $\frac{1}{2}$ 571 (600-1 $\frac{1}{2}$ )	NA



KAISER/LAKE OZARK, MISSOURI  
Amdt 2B 12AUG21

38°06'N-92°33'W

LOC/DME RWY 22

LOC I-AIZ <b><u>111.5</u></b>	APP CRS <b>217°</b>	Rwy Ldg <b>6497</b> TDZE <b>869</b> Apt Elev <b>869</b>
----------------------------------	------------------------	---

LOC/DME RWY 22  
LEE C FINE MEML (AIZ)

**T** When local altimeter setting not received, use Camdenton altimeter setting and increase all MDAs 60 feet, increase S-22 Cat C and Circling Cat C visibility  $\frac{1}{4}$  SM. Helicopter visibility reduction below 1 SM NA. DME from SHY VOR/DME. Simultaneous reception of I-AIZ and SHY VOR/DME required.

**MISSED APPROACH:** Climb to 3100 direct SHY VOR/DME and hold, continue climb-in-hold to 3100.

AWOS-3PT <b>135.325</b>	MIZZU APP CON <b>124.1 353.925</b>	UNICOM <b>122.8 (CTAF) 0</b>
----------------------------	---------------------------------------	---------------------------------

