

DENVER, COLORADO

AL-5715 (FAA)

25107

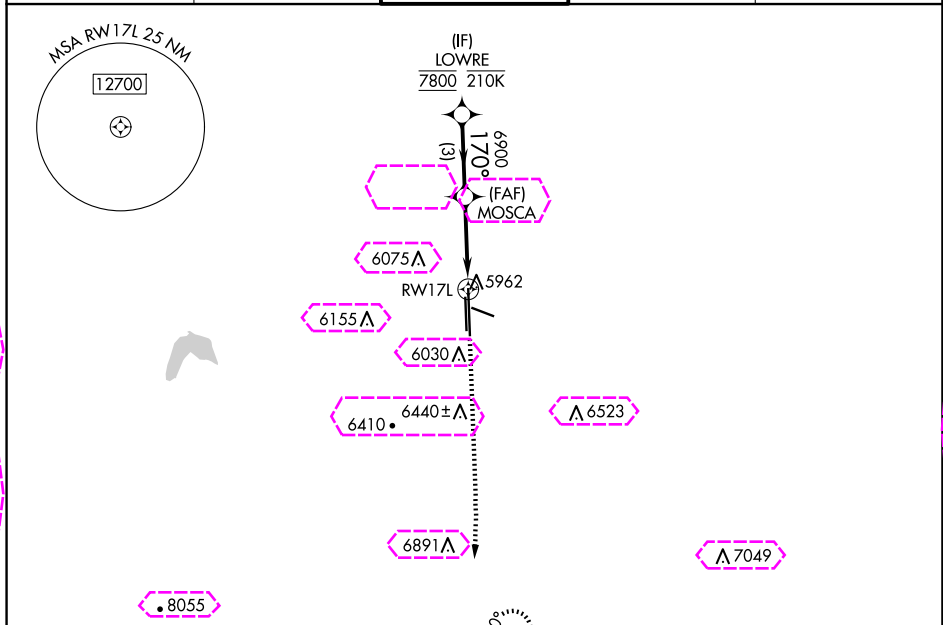
WAAS CH <b>72930</b> <b>W17A</b>	APP CRS <b>170°</b>	Rwy Idg TDZE <b>5823</b> Apt Elev <b>5885</b>	<b>10001</b>
--	------------------------	---	--------------

# RNAV (GPS) Y RWY 17L

CENTENNIAL (APA)

RNP APCH - GPS.	MISSED APPROACH: Climb to 6300 then climbing right turn to 10400 direct HOHUM and hold, continue climb-in-hold to 10400.
Circling Rwy 35L NA at night. For uncompensated Baro-VNAV systems, LNAV/VNAV NA below -21°C or above 54°C.	

ATIS <b>120.3</b>	DENVER APP CON <b>132.75 269.3</b>	CENTENNIAL TOWER <b>118.9</b>	GND CON <b>121.8</b>	CLNC DEL <b>128.6</b>
----------------------	---------------------------------------	----------------------------------	-------------------------	--------------------------



8812

HOHUM  $\Delta$  1020° 7 NM

LOWRE  
7800  
170°  
6900  
GP 3.00°  
TCH 47  
3 NM  
2.1 NM  
1.2 NM  
1.2 NM to RW17L  
RW17L

6300  
10400  
HOHUM  
 $\Delta$

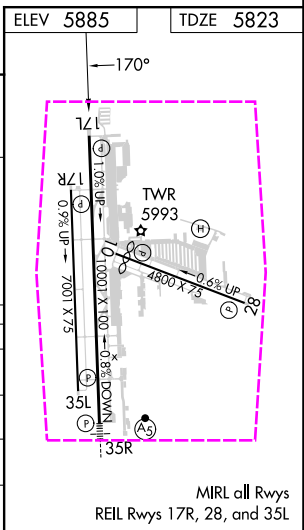
CATEGORY	A	B	C	D
----------	---	---	---	---

LPV DA		6023- $\frac{3}{4}$	200 (200- $\frac{3}{4}$ )	
--------	--	---------------------	---------------------------	--

LNAV/VNAV DA		6123- $\frac{7}{8}$	300 (300- $\frac{7}{8}$ )	
--------------	--	---------------------	---------------------------	--

LNAV MDA	6220-1	397 (400-1)	6220-1 $\frac{1}{2}$	397 (400-1 $\frac{1}{2}$ )
----------	--------	-------------	----------------------	----------------------------

CIRCLING	6400-1 515 (600-1)	6540-1 655 (700-1)	6740-2 $\frac{1}{2}$ 855 (900-2 $\frac{1}{2}$ )	6900-3 1015 (1100-3)
----------	-----------------------	-----------------------	--	-------------------------



DENVER, COLORADO  
Amdt 2B 17APR25

39°34'N-104°51'W

# RNAV (GPS) Y RWY 17L

CENTENNIAL (APA)

SW-1, 10 JUL 2025 to 07 AUG 2025

SW-1, 10 JUL 2025 to 07 AUG 2025

DENVER, COLORADO

AL-5715 (FAA)

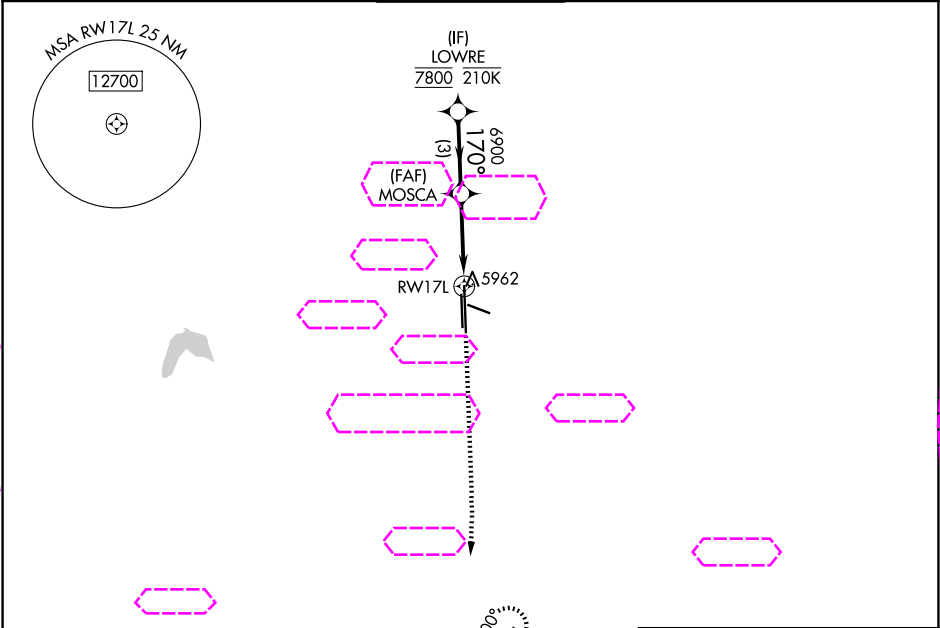
25219

WAAS CH <b>72930</b> <b>W17A</b>	APP CRS <b>170°</b>	Rwy Ldg TDZE Apt Elev	<b>10001</b> <b>5823</b> <b>5885</b>
--	------------------------	-----------------------------	--

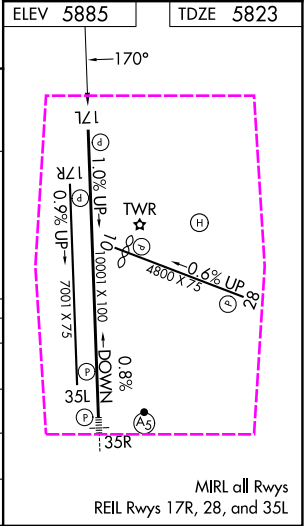
RNAV (GPS) Y RWY 17L  
CENTENNIAL (APA)

RNP APCH - GPS.	MISSED APPROACH: Climb to 6300 then climbing right turn to 10400 direct HOHUM and hold, continue climb-in-hold to 10400.
Circling Rwy 35L NA at night. For uncompensated Baro-VNAV systems, LNAV/VNAV NA below -21°C or above 54°C.	

ATIS <b>120.3</b>	DENVER APP CON <b>132.75 269.3</b>	CENTENNIAL TOWER <b>118.9</b>	GND CON <b>121.8</b>	CLNC DEL <b>128.6</b>
----------------------	---------------------------------------	----------------------------------	-------------------------	--------------------------



LOWRE		MOSCA		RWY 17L	
7800		6900		5962	
GP 3.00° TCH 47		1.2 NM to RWY 17L		RWY 17L	
3 NM		2.1 NM		1.2 NM	
CATEGORY	A	B	C	D	
LPV DA	6023-3/4		200 (200-3/4)		
LNAV/VNAV DA	6123-7/8		300 (300-7/8)		
LNAV MDA	6220-1		6220-1 1/8		397 (400-1 1/8)
CIRCLING	6400-1		6740-2 1/2		6900-3
	515 (600-1)		855 (900-2 1/2)		1015 (1100-3)



DENVER, COLORADO  
Amdt 2B 17APR25

39°34'N-104°51'W

CENTENNIAL (APA)  
RNAV (GPS) Y RWY 17L

SW-1, 07 AUG 2025 to 04 SEP 2025

SW-1, 07 AUG 2025 to 04 SEP 2025