

DENVER, COLORADO

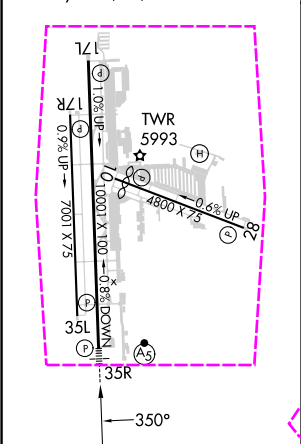
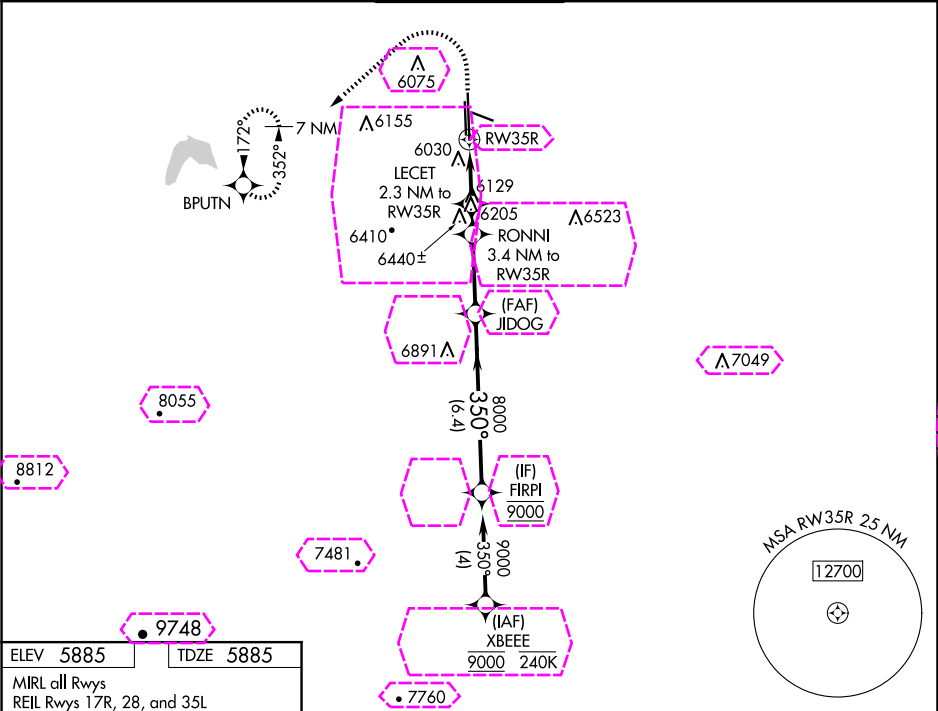
AL-5715 (FAA)

24193

WAAS CH 40339 W35A	APP CRS 350°	Rwy Idg TDZE 5885 Apt Elev 5885	10001 5885 5885
--	------------------------	---	--

RNAV (GPS) RWY 35R
CENTENNIAL (APA)

RNP APCH.		MALSR	MISSED APPROACH: (Do not exceed 240K until BPUTN) Climb to 8200 then climbing left turn to 9600 direct BPUTN and hold.	
CIRCLING Rwy 35L NA at night. For uncompensated Baro-VNAV systems, LNAV/VNAV NA below -21°C or above 54°C. For inop ALS, increase LNAV Cats C/D visibility to 1 3/8 SM.				
ATIS 120.3	DENVER APP CON 132.75 269.3	CENTENNIAL TOWER 118.9	GND CON 121.8	CLNC DEL 128.6



8200	9600	BPUTN	RONNI	JIDOG	FIRPI
↑	↶	✧	3.4 NM to RW35R	8000	9000
		2.3 NM to RW35R		350°	
		1.4 NM to RW35R		8000	
			7060		
			6700		
			2.9 NM	6.4 NM	
CATEGORY	A	B	C	D	
LPV DA	6085-1/2	200 (200-1/2)			
LNAV/VNAV DA	6324-3/4	439 (500-3/4)			
LNAV MDA	6380-1/2	495 (500-1/2)	6380-1	495 (500-1)	
CIRCLING	6400-1 515 (600-1)	6540-1 655 (700-1)	6740-2 1/2 855 (900-2 1/2)	6760-2 3/4 875 (900-2 3/4)	

DENVER, COLORADO
Amdt 1B 23FEB23

39°34'N-104°51'W

CENTENNIAL (APA)
RNAV (GPS) RWY 35R

SW-1, 10 JUL 2025 to 07 AUG 2025

SW-1, 10 JUL 2025 to 07 AUG 2025

RNAV (GPS) RWY 35R

SW-1, 07 AUG 2025 to 04 SEP 2025