

DENVER, COLORADO

AL-5715 (FAA)

24193

WAAS CH <b>82107</b> <b>W28A</b>	APP CRS <b>283°</b>	Rwy Idg TDZE Apt Elev	<b>4800</b> <b>5813</b> <b>5885</b>
--	------------------------	-----------------------------	---

# RNAV (GPS) RWY 28

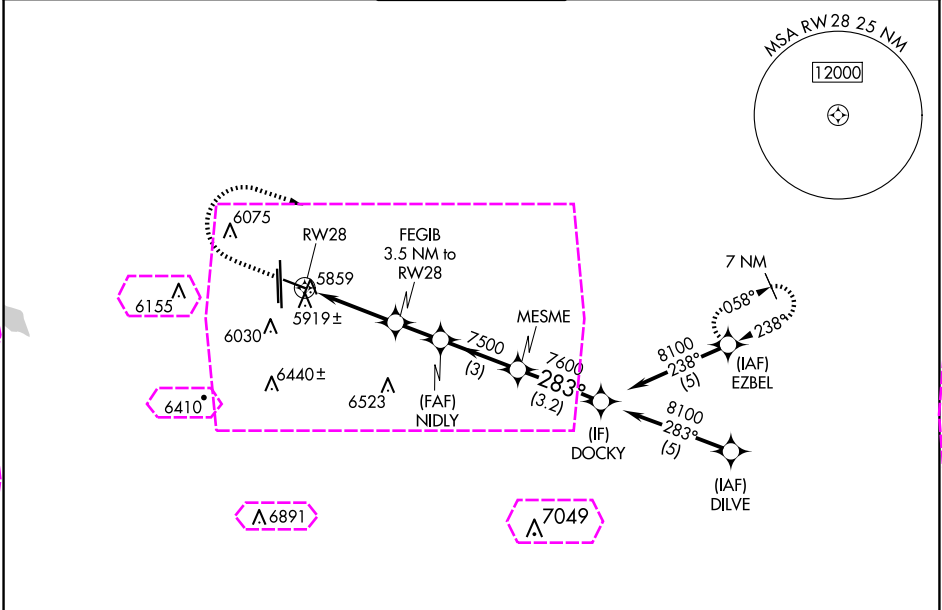
CENTENNIAL (APA)

RNP APCH.

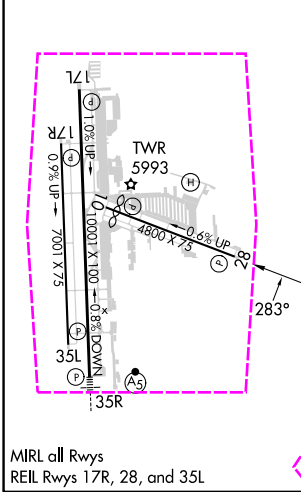
▼ For uncompensated Baro-VNAV systems, LNAV/VNAV NA below -26°C or above 49°C. Rwy 28 helicopter visibility reduction below ¾ SM NA. Circling Rwy 35L NA at night.




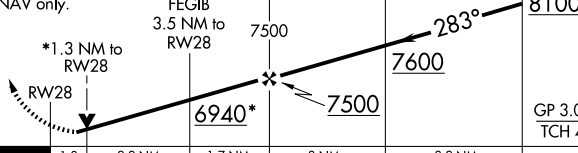
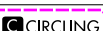
MISSED APPROACH: Climb to 6400 then climbing right turn to 9000 direct EZBEL and hold.

ATIS <b>120.3</b>	DENVER APP CON <b>132.75 269.3</b>	CENTENNIAL TOWER <b>118.9</b>	GND CON <b>121.8</b>	CLNC DEL <b>128.6</b>
----------------------	---------------------------------------	----------------------------------	-------------------------	--------------------------



ELEV <b>5885</b>	TDZE <b>5813</b>
------------------	------------------



6400	9000	EZBEL					
							
*LNAV only.			FEGIB 3.5 NM to RW28	NIDLY 7500	MESME	DOCKY	
							
			1.3	2.2 NM	1.7 NM	3 NM	3.2 NM
							GP 3.00° TCH 41
CATEGORY	A		B		C	D	
LPV DA	6079-7/8 266 (200-7/8)						
LNAV/ VNAV	DA		6119-1 306 (300-1)				
LNAV MDA	6260-1 447 (400-1)				6260-13/8 447 (400-13/8)		
	6400-1 515 (600-1)		6540-1 655 (700-1)		6740-21/2 855 (900-21/2)		6900-3 1015 (1100-3)

DENVER, COLORADO

Amdt 1C 08NOV18

39°34'N-104°51'W

# RNAV (GPS) RWY 28

CENTENNIAL (APA)

SW-1, 10 JUL 2025 to 07 AUG 2025

SW-1, 10 JUL 2025 to 07 AUG 2025

DENVER, COLORADO

AL-5715 (FAA)

25219

WAAS CH <b>82107</b> <b>W28A</b>	APP CRS <b>283°</b>	Rwy Ldg TDZE Apt Elev <b>4800</b> <b>5813</b> <b>5885</b>
--	------------------------	--

# RNAV (GPS) RWY 28

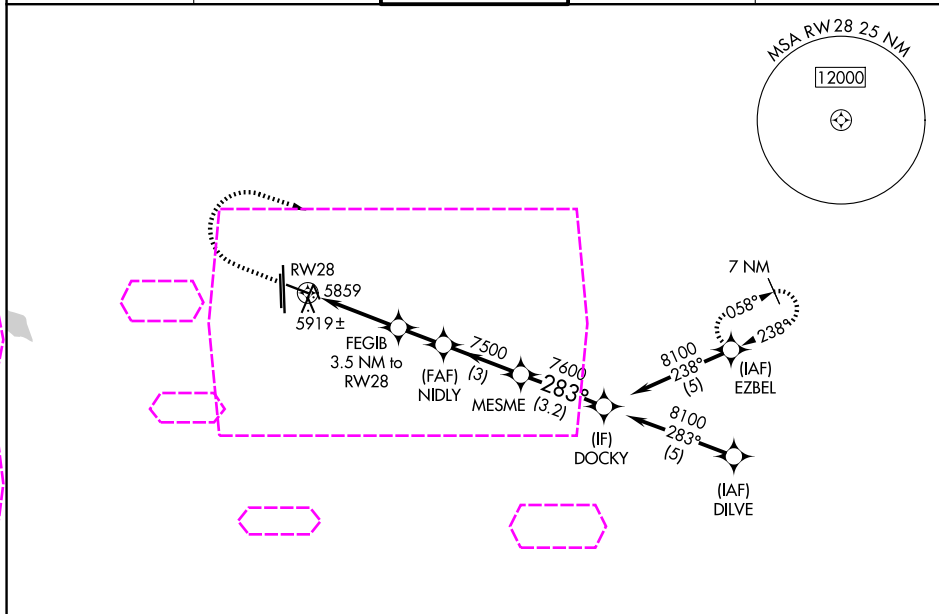
## CENTENNIAL (APA)

RNP APCH.

▼ For uncompensated Baro-VNAV systems, LNAV/VNAV NA below -26°C or above 49°C. Rwy 28 helicopter visibility reduction below  $\frac{3}{4}$  SM NA. Circling Rwy 35L NA at night.

MISSED APPROACH: Climb to 6400 then climbing right turn to 9000 direct EZBEL and hold.

ATIS <b>120.3</b>	DENVER APP CON <b>132.75 269.3</b>	CENTENNIAL TOWER <b>118.9</b>	GND CON <b>121.8</b>	CLNC DEL <b>128.6</b>
----------------------	---------------------------------------	----------------------------------	-------------------------	--------------------------



ELEV <b>5885</b>	TDZE <b>5813</b>
------------------	------------------

	6400	9000	EZBEL				
	*LNAV only.						
	*1.3 NM to RWY 28						
	FEGIB 3.5 NM to RWY 28						
	NIDLY 7500						
				MESME			
				DOCKY			
				8100			
				283°			
				7600			
				7500			
				6940*			
				1.3	2.2 NM	1.7 NM	3 NM
				3.2 NM			
				GP 3.00°			
				TCH 41			
CATEGORY	A	B	C	D			
LPV DA	6079-7/8 266 (200-7/8)						
LNAV/VNAV DA	6119-1 306 (300-1)						
LNAV MDA	6260-1	447 (400-1)	6260-1 3/8	447 (400-1 3/8)			
CIRCLING	6400-1	6540-1	6740-2 1/2	6900-3			
	515 (600-1)	655 (700-1)	855 (900-2 1/2)	1015 (1100-3)			

MIRL all Rwys  
REIL Rwy 17R, 28, and 35L

DENVER, COLORADO

Amdt 1C 08NOV18

39°34'N-104°51'W

CENTENNIAL (APA)

RNAV (GPS) RWY 28